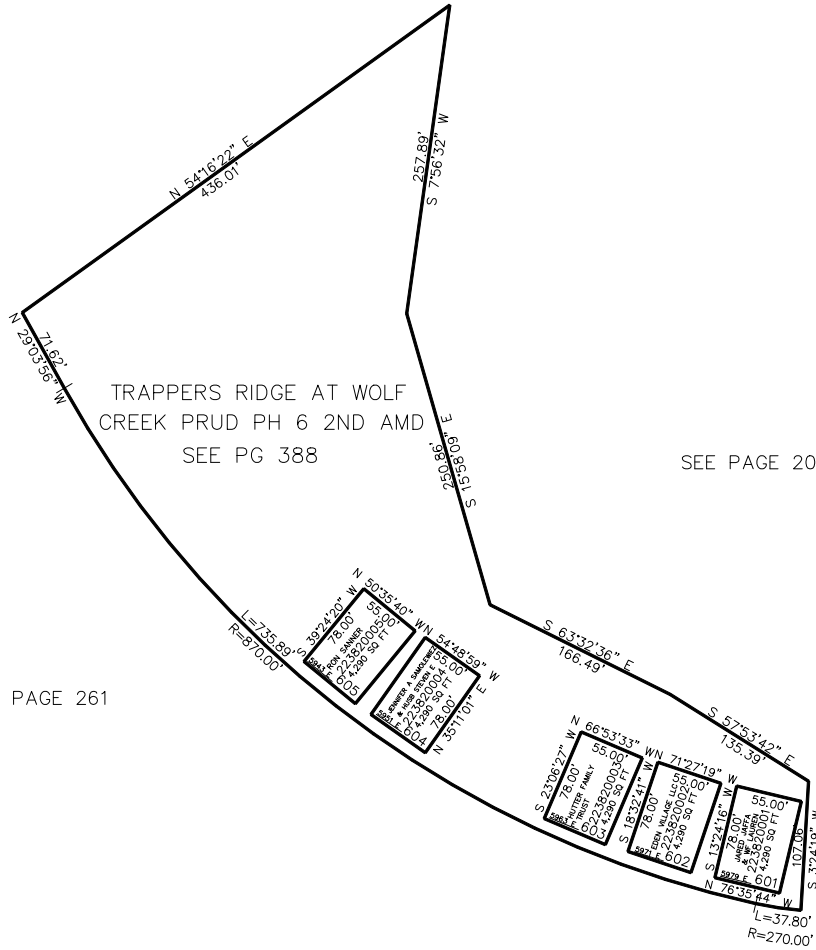


PART OF THE NW. 1/4, OF SECTION 26, T.7N., R.1E., S.L.B. & M.
TRAPPERS RIDGE AT WOLF CREEK P.R.UD. PHASE 6 1ST AMENDMENT

TAXING UNIT: 203

IN WEBER COUNTY
SCALE 1" = 80'

SEE PAGE 20



SEE PAGE 261

10' UTILITY & DRAINAGE EASEMENTS EACH
SIDE OF PROPERTY LINES AS INDICATED
BY DASHED LINES EXCEPT AS OTHERWISE
SHOWN.

FOR COMPLETE ENG DATA SEE
ORIGINAL DEDICATION PLAT IN
BOOK 88, PAGE 83 OF RECORDS.