

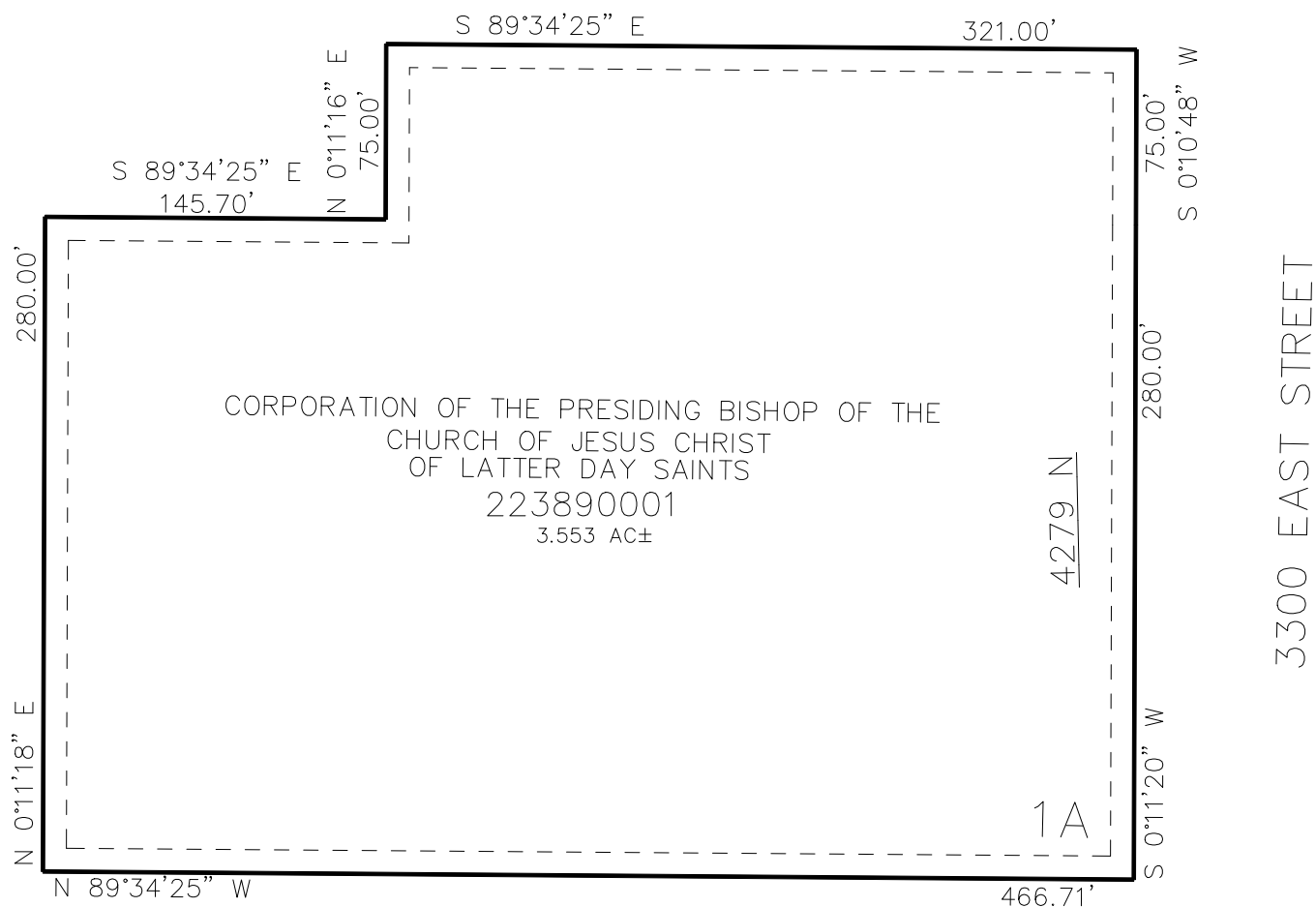
PART OF THE SW. 1/4 OF SECTION 17 & THE NW. 1/4, OF SECTION 20, T.7N., R.1E., S.L.B. & M.
THIRTY-THREE HUNDRED EAST CHURCH SUBDIVISION 1ST AMENDMENT

IN WEBER COUNTY

TAXING UNIT: 36

SCALE 1" = 40'

SEE PAGE 364



SEE PAGE 11

10' UTILITY & DRAINAGE EASEMENTS EACH
 SIDE OF PROPERTY LINES AS INDICATED
 BY DASHED LINES EXCEPT AS OTHERWISE
 SHOWN.

FOR COMPLETE ENG. DATA SEE
 ORIGINAL DEDICATION PLAT IN
 BOOK 89, PAGE 53 OF RECORDS.