

T.5N., R.1E., S.L.B. & M.  
IN WEBER COUNTY  
SCALE 1" = 2400'

TAXING UNIT: 58, 520

SEE BOOK 20, PAGE 43

SEE BOOK 20, PAGE 44

SEE BOOK  
5  
PAGE 1

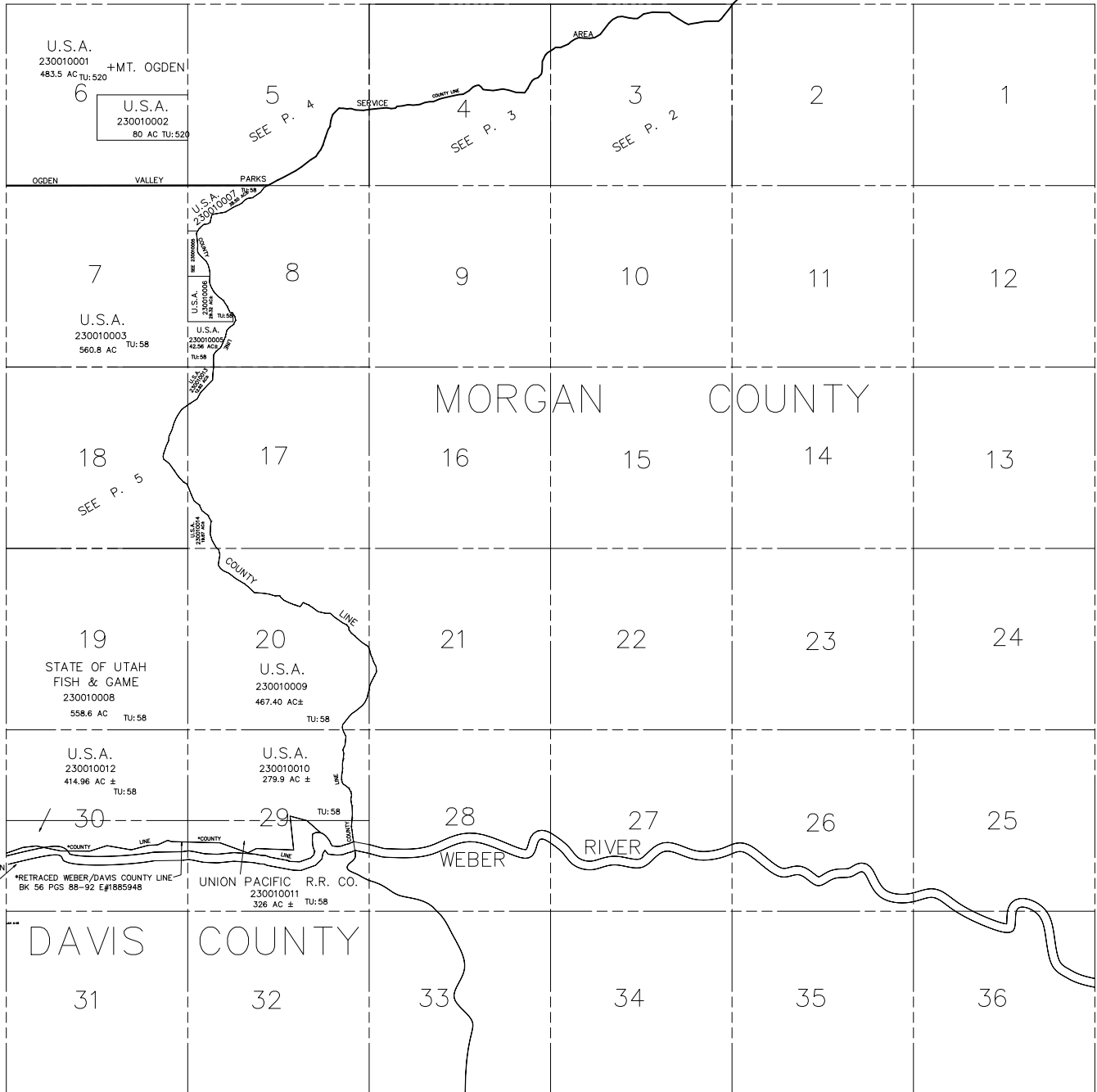
SEE BOOK  
6  
PAGE 120

SEE BOOK  
7  
PAGE 98

SEE PAGE 6

HIGHWAY R.O.W.  
SEE BK 754, P.306  
STATE ROAD COMMISSION  
HAS PERPETUAL  
EASEMENT (836-264)

\*RETRACED WEBER/DAVIS COUNTY LINE  
BK 56 PGS 88-92 E#1885948



\*FOR TAX PURPOSES ONLY\*

NOTE: WEBER/MORGAN ASSESSMENT LINE  
CHANGED TO COUNTY LINE - 1998