

SECTION 3, T.7N., R.3E., S.L.B. & M.

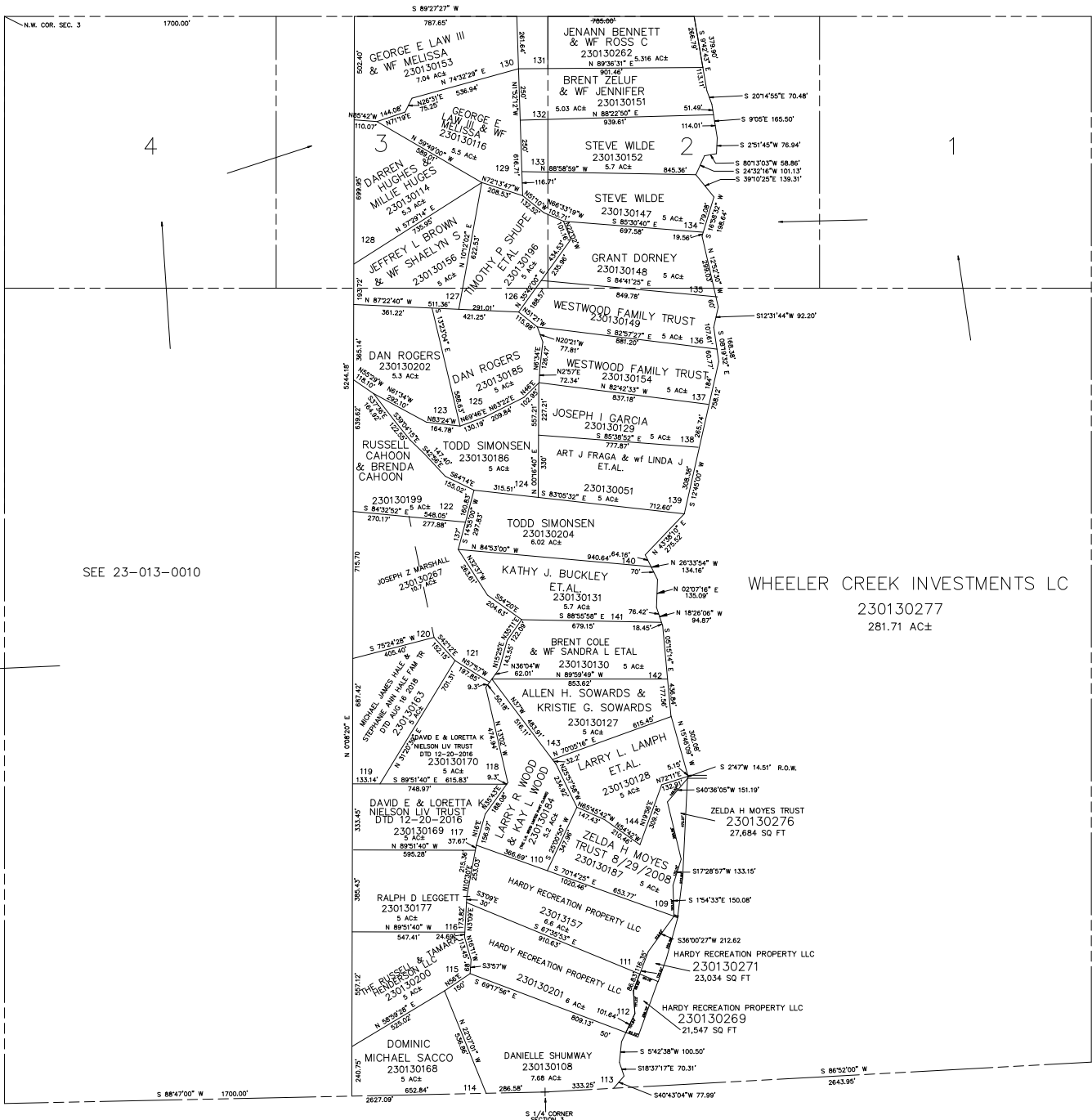
13-1

IN WEBER COUNTY

SCALE 1" = 400'

TAXING UNIT: 520

SEE PAGE 46-1



SEE 23-013-0010

WHEELER CREEK INVESTMENTS LC  
230130277  
281.71 AC±

SEE PAGE 13-3

\*FOR TAX PURPOSES ONLY\*

SEE PAGE 13

SEE PAGE 13