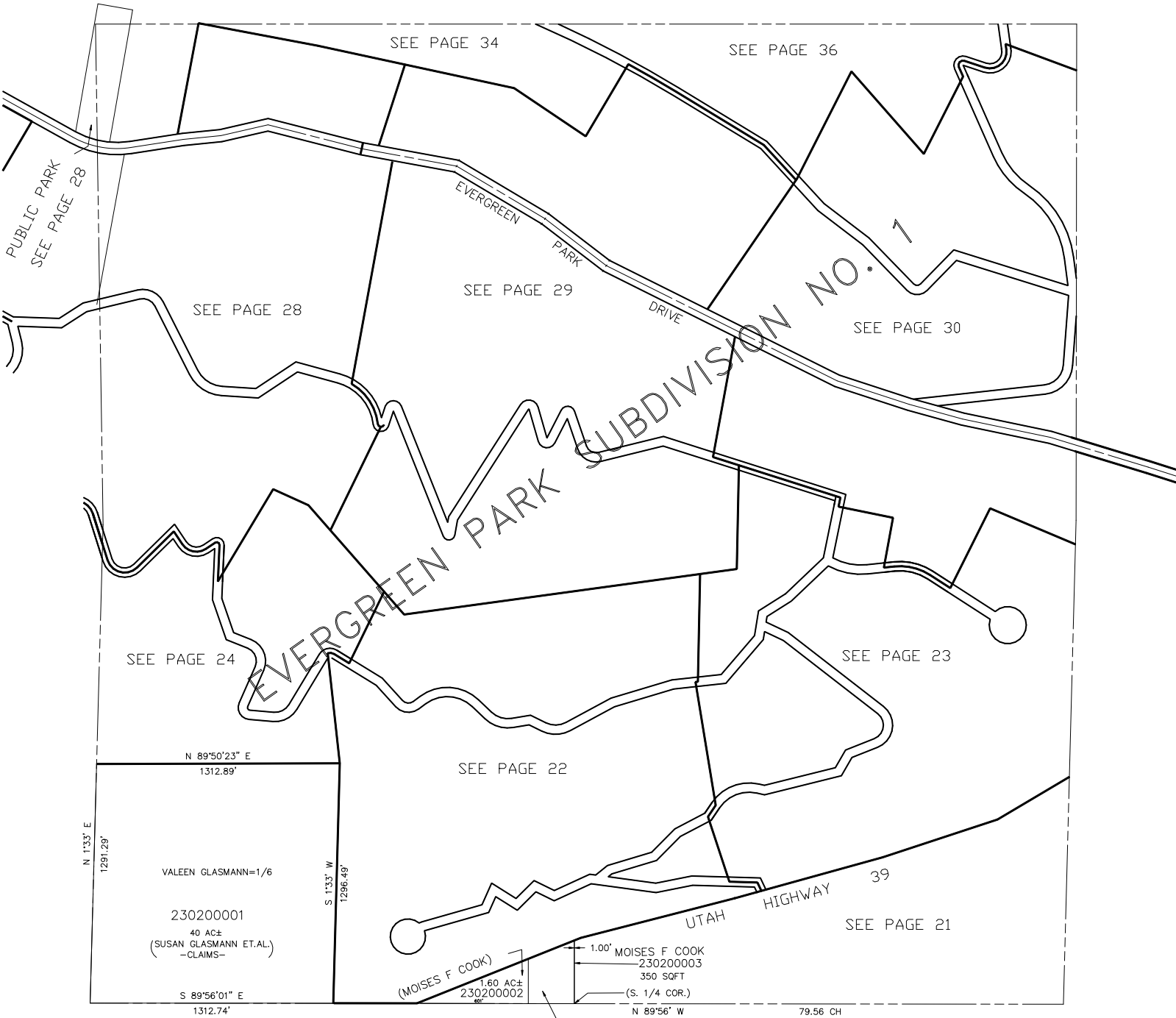


SECTION 32, T.7N., R.3E., S.L.B. & M.
IN WEBER COUNTY
SCALE 1" = 400'

20

TAXING UNIT: 520



23

MOISES F COOK
230200004
1.65 AC±

FOR TAX PURPOSES ONLY

NOTE: SEE GOV. LAND OFFICE
DEPENDENT RESURVEY. NOT OFFICIALLY
RECORDED IN THIS OFFICE, BUT FILED
IN PLAT BOOK 12, PAGE 18 (ORIGINALS)
FOR REFERENCE PURPOSES.

MTT 04-96