

PART OF SEC. 31-32, T.7N., R.3E., S.L.B. & M.  
**EVERGREEN PARK SUBDIVISION NO. 1**

LOTS 50-56, 79-85, 173-176

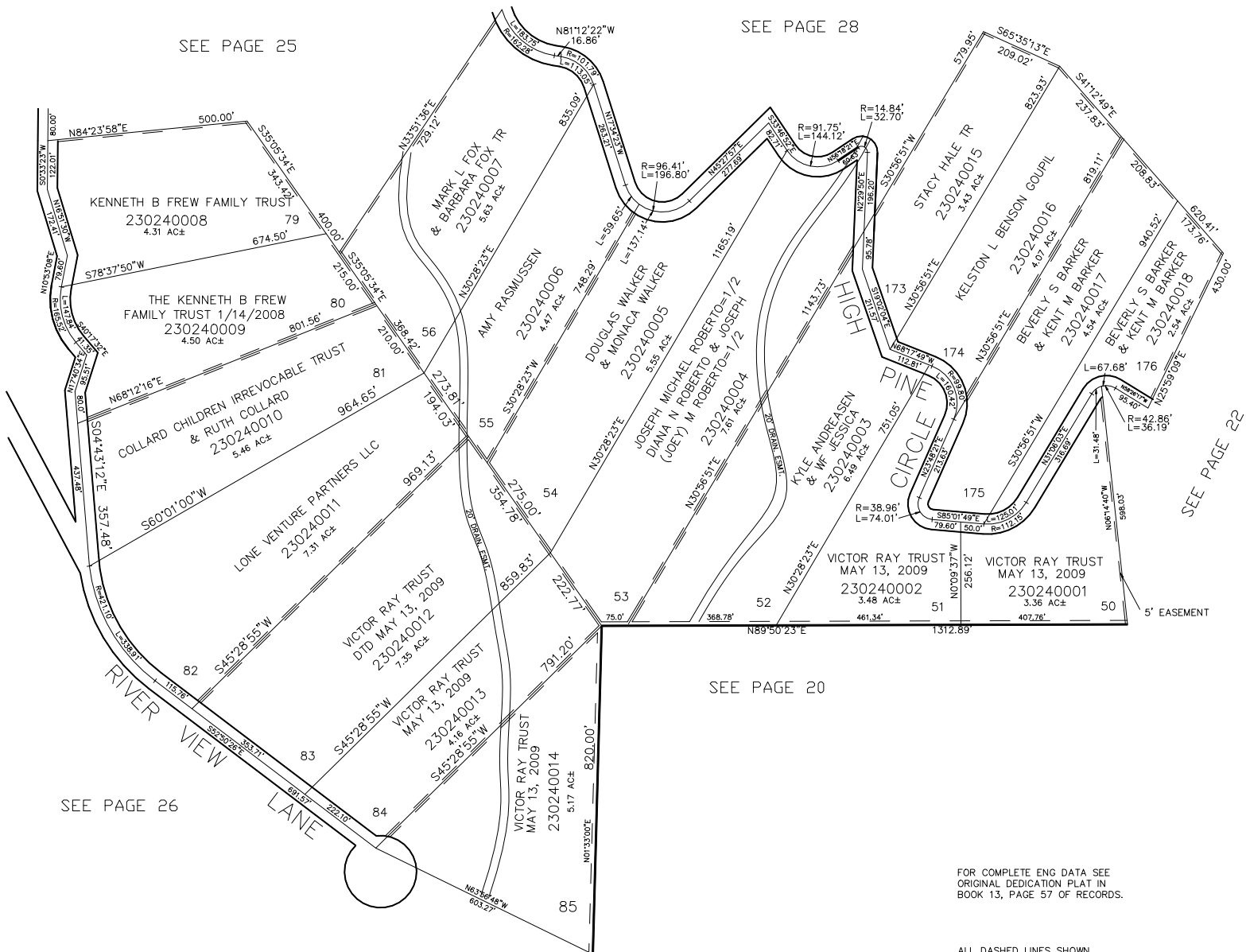
IN WEBER COUNTY

SCALE 1" = 200'

TAXING UNIT: 520

SEE PAGE 25

SEE PAGE 28



SEE PAGE 26

SEE PAGE 20

SEE PAGE 22

FOR COMPLETE ENG DATA SEE ORIGINAL DEDICATION PLAT IN BOOK 13, PAGE 57 OF RECORDS.

ALL DASHED LINES SHOWN ON LOT LINES ARE 10' UTILITY EASEMENTS UNLESS OTHERWISE NOTED.