

PART OF SEC. 32-33, T.7N., R.3E., S.L.B. & M.
EVERGREEN PARK SUBDIVISION NO. 1
 LOTS 225-227, 229-230, 234-240, 325-338, 443-451, 573-576

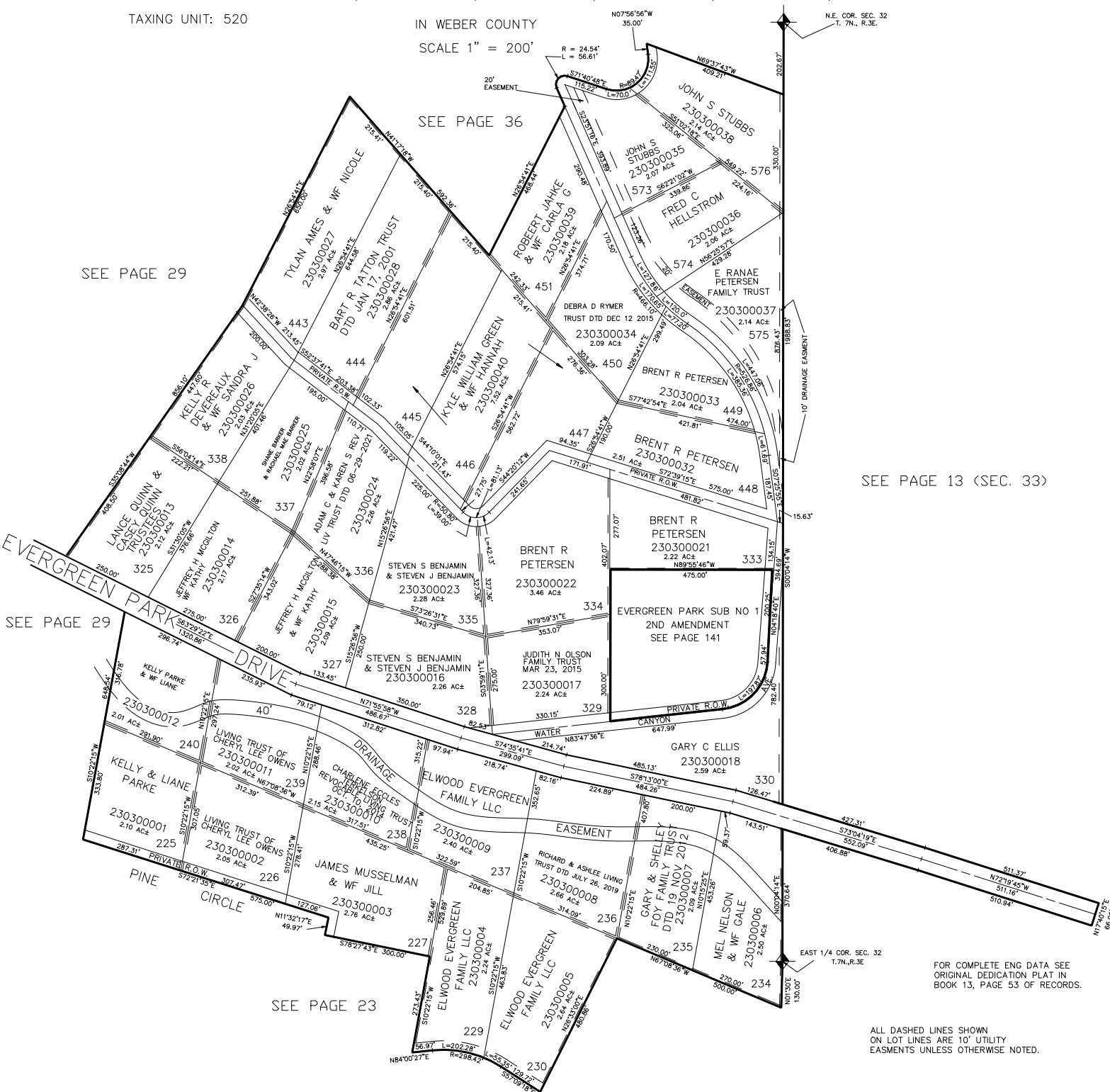
TAXING UNIT: 520

IN WEBER COUNTY

SCALE 1" = 200'

SEE PAGE 36

SEE PAGE 29



FOR TAX PURPOSES ONLY

MTT 04-96