

S.E. 1/4
SECTION 36, T.8N., R.1E., S.L.B.&M.

IN WEBER COUNTY

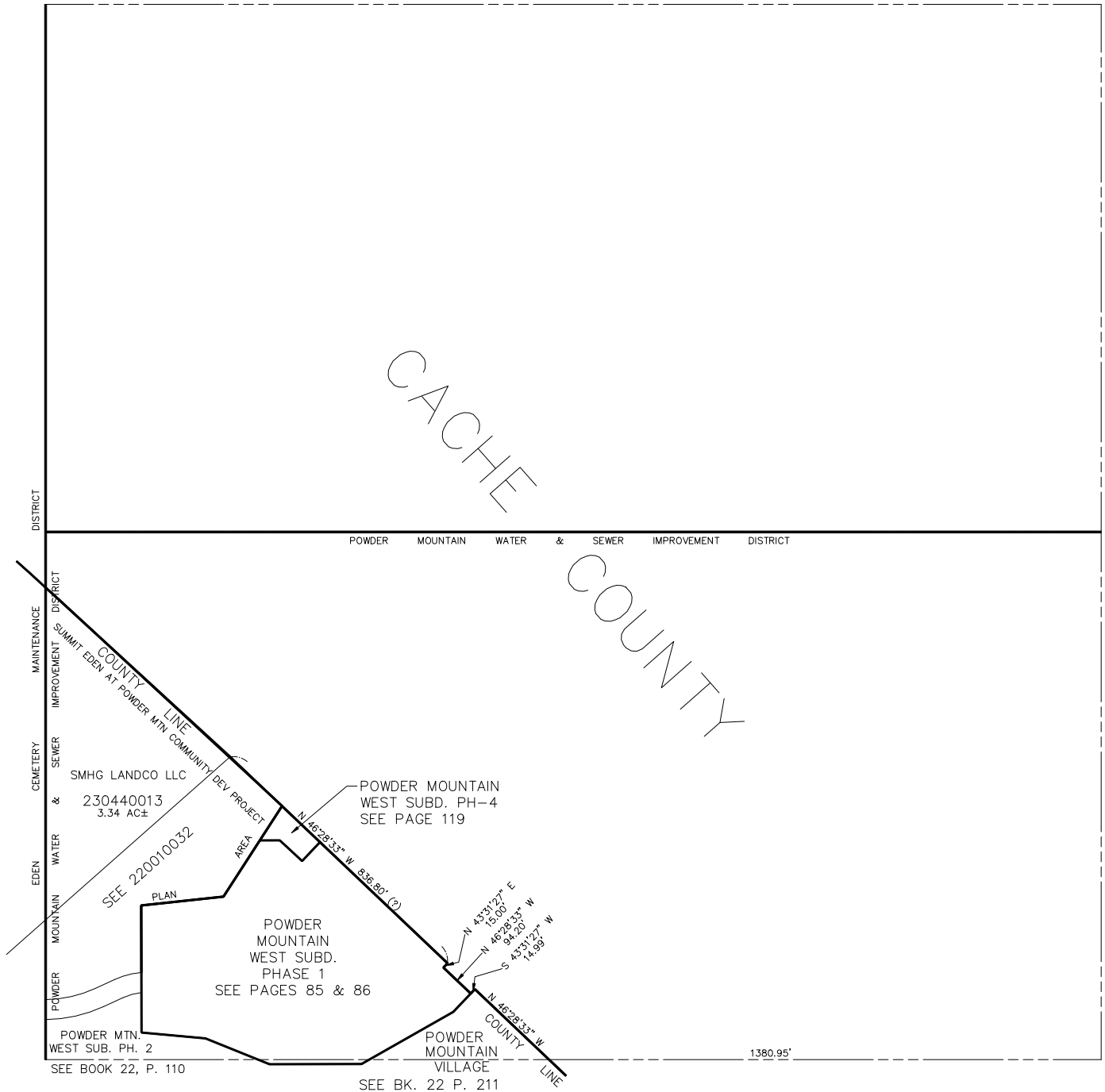
SCALE 1" = 200'

TAXING UNIT: 490

SEE PAGE 44

SEE PAGE 44

SEE PAGE 45



NOTE: WEBER/CACHE ASSESSMENT LINE
CHANGED TO COUNTY LINE - 1995

SEE BOOK 22, P. 1-2

FOR TAX PURPOSES ONLY