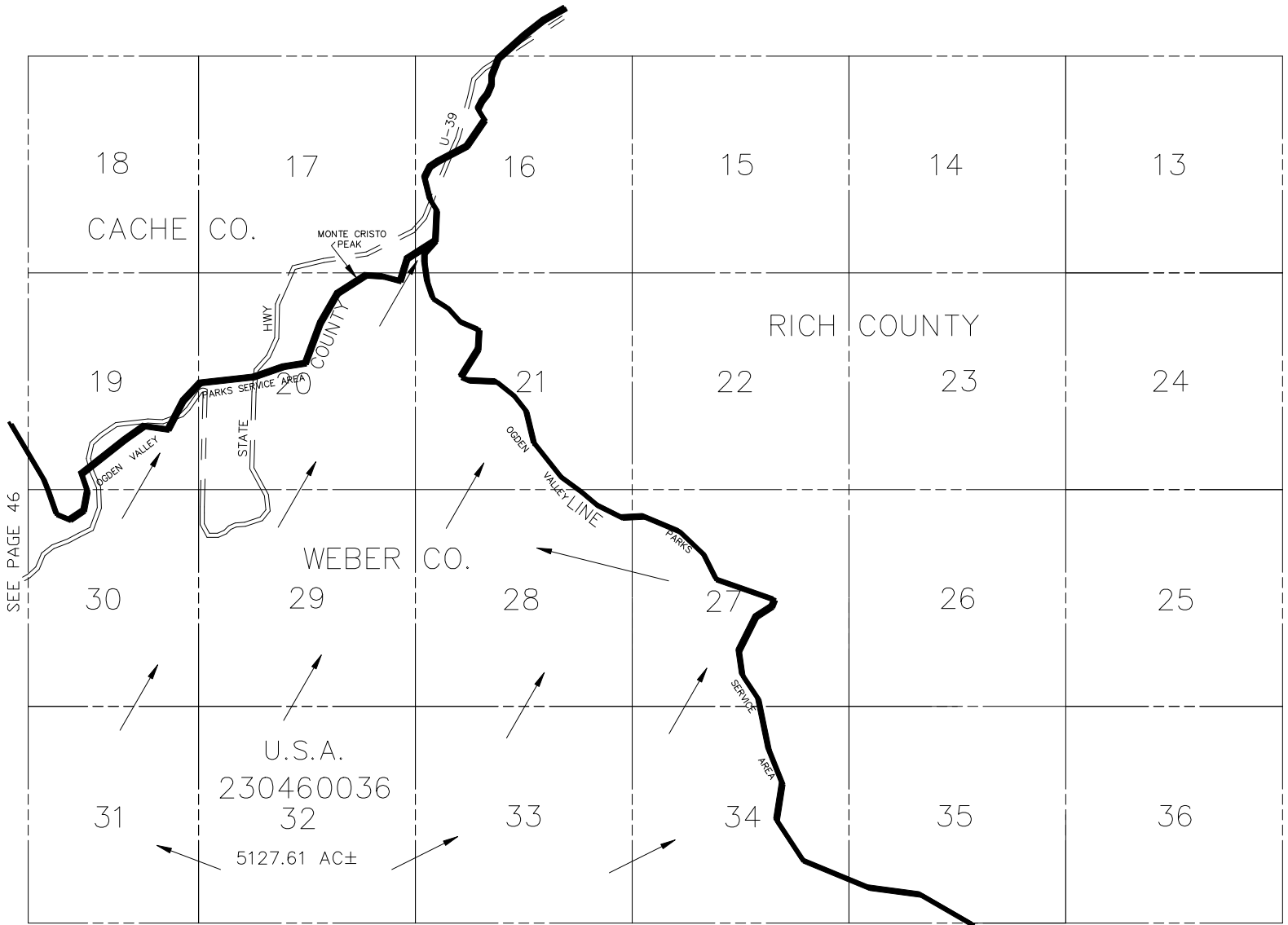


A PART OF
T.8N., R.4E., S.L.B. & M.

IN WEBER COUNTY

SCALE 1" = 2000'

TAXING UNIT: 520



NOTE: THIS PLAT IS MERELY FOR PUBLIC INFORMATION.
NO RECORD FOR THE LAND HAS BEEN MADE IN THE
OFFICE OF WEBER COUNTY RECORDER. ALL SECTIONS
IN T.8N., R.4E., ARE PUBLIC DOMAIN. SEE PROCLAMATION
#1176 ON FILE WITH U.S. FOREST SERVICE.

SEE PAGE 42

NOTE: WEBER/CACHE ASSESSMENT LINE
CHANGED TO COUNTY LINE - 1995

FOR TAX PURPOSES ONLY