

PART OF NE 1/4 SEC. 12, SE 1/4 SEC. 1, T.7N.,R.2E., & SW 1/4 SEC. 6, NW 1/4 SEC. 7, T.7N.,R.3E., S.L.B. & M

SUNRIDGE SUBDIVISION NO. 2

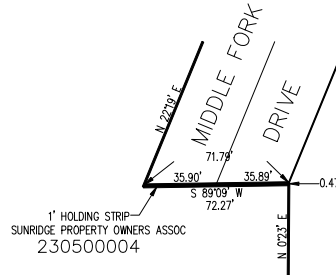
50

TAXING UNIT: 520

UNIT NO. 2
LOTS C,D & E
WEBER COUNTY
SCALE 1" = 200'

SEE PAGE 52

EAST 3310.02'

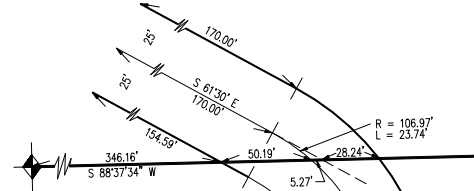


DETAIL 'C'

COMMON AREA 'C'

SUNRIDGE PROPERTY OWNERS ASSN
230500001
202.14 AC±

COMMON AREAS IN UNITS 1 & 2
ARE TO BE USED JOINTLY BY
THE HOMEOWNERS ASSOCIATION
OF LOTS 1 THRU 38.



SEE PAGE 13

FOR COMPLETE ENG DATA SEE
ORIGINAL DEDICATION PLAT IN
BOOK 17, PAGE 29.

FOR TAX PURPOSES ONLY

BDB 2-96

23

E. 1/4 COR. SEC. 12, T.7N., R.2E.