

PART OF SEC. 1, T.7N.,R.2E. & PART OF SEC. 6, T.7N.,R.3E., S.L.B.& M.

55

SUNRIDGE SUBDIVISION NO. 3

LOTS 57 TO 62, 68 TO 72, & 74 TO 76

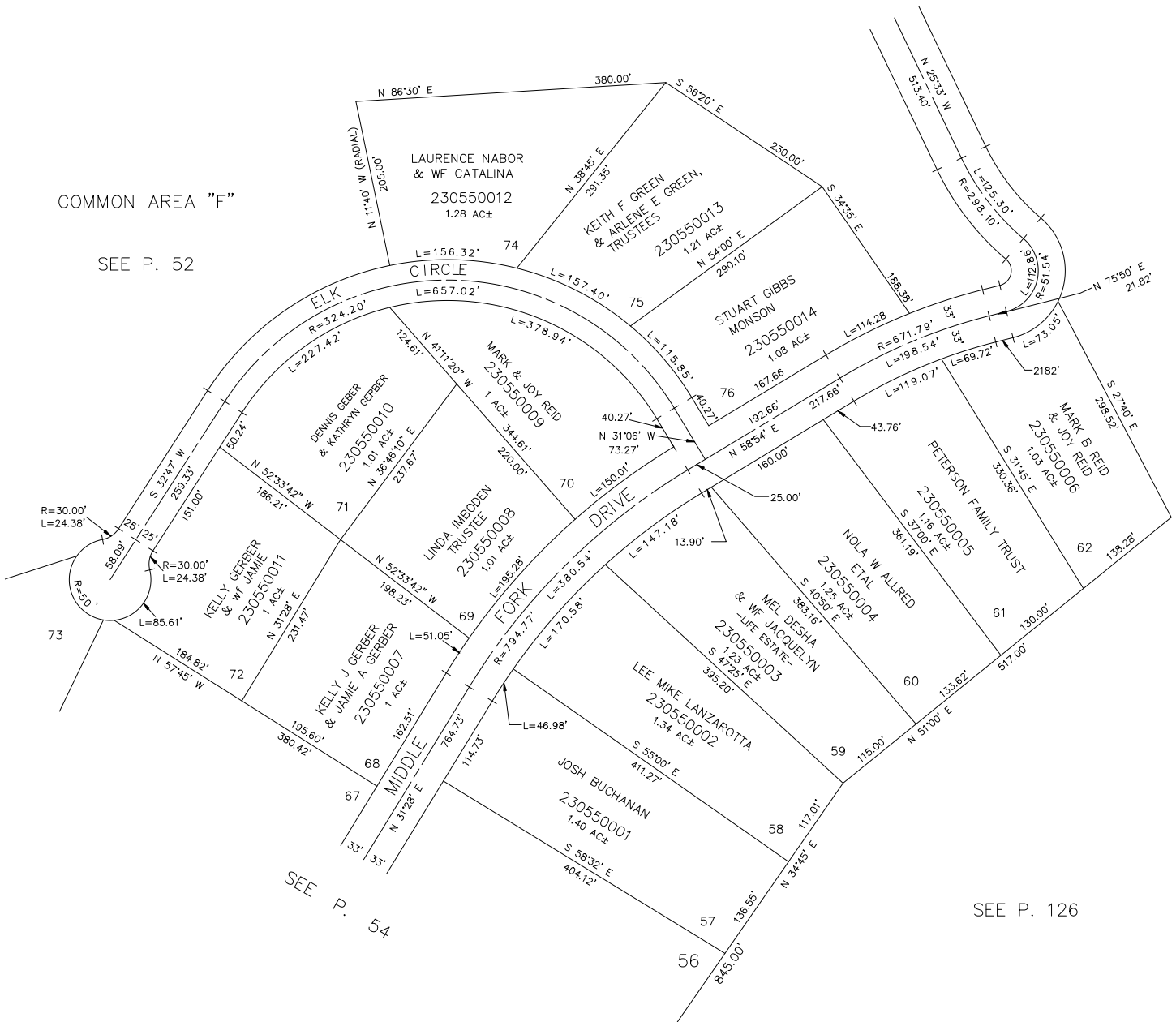
TAXING UNIT: 58

IN WEBER COUNTY

SCALE 1" = 100'

COMMON AREA "F"

SEE P. 52



FOR TAX PURPOSES ONLY

BDB 2-96