

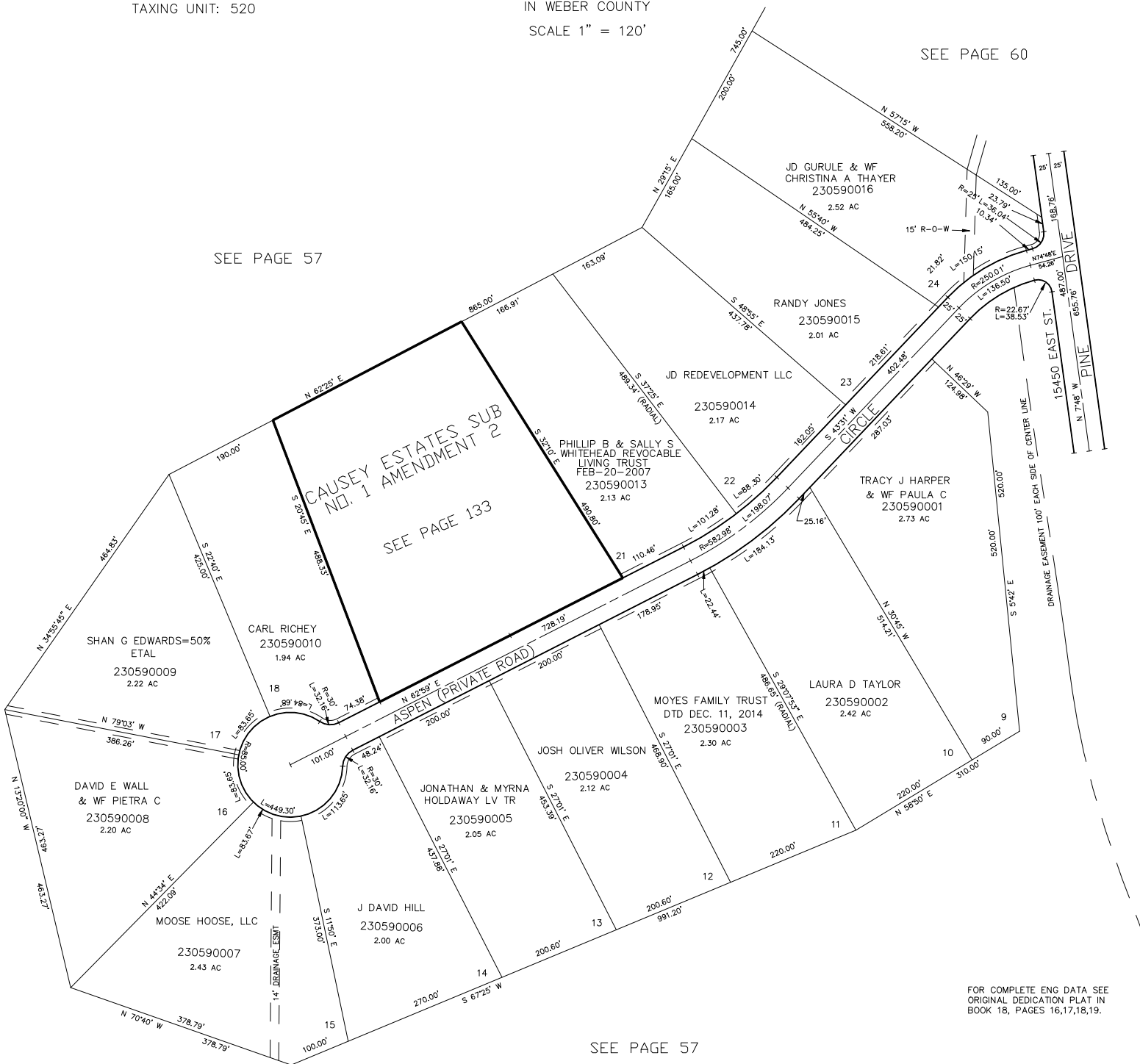
PART OF SECTION 14, T.6N., R.3E., S.L.B. & M.
CAUSEY ESTATES SUBDIVISION NO. 1

LOTS 9 - 24
 IN WEBER COUNTY
 SCALE 1" = 120'

TAXING UNIT: 520

SEE PAGE 57

SEE PAGE 60



SEE PAGE 57

7' UTILITY & DRAINAGE EASEMENTS ACROSS
 THE FRONT OF EACH LOT AS SHOWN

FOR TAX PURPOSES ONLY

MTT 01-96