

PART OF SECTION 14, T.6N., R.3E., S.L.B. & M.
CAUSEY ESTATES SUBDIVISION NO. 1

TAXING UNIT: 520

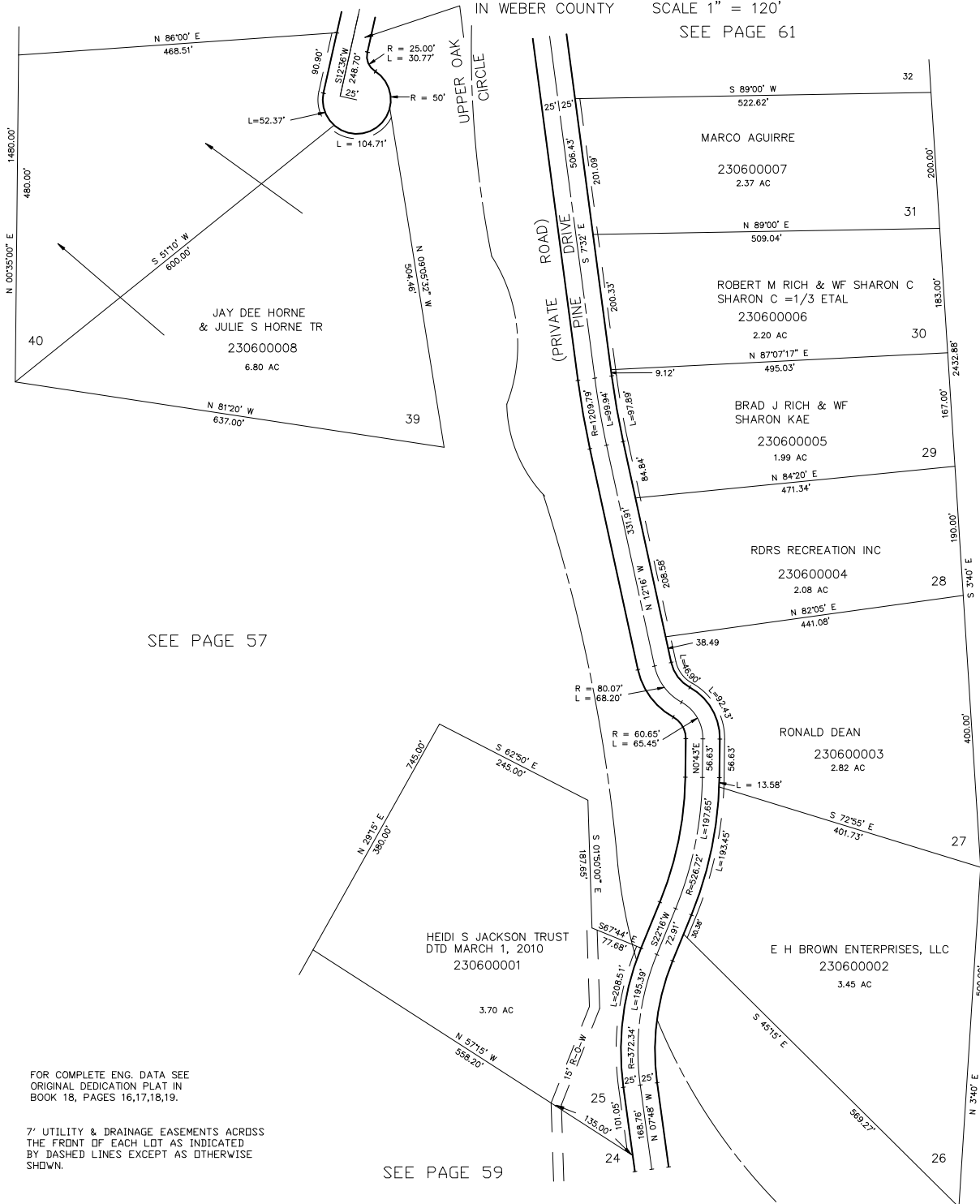
SEE PAGE 61

LOTS 25-31, 39 & 40

IN WEBER COUNTY

SCALE 1" = 120'

SEE PAGE 61



SEE PAGE 57

SEE PAGE 57

SEE PAGE 59

FOR COMPLETE ENG. DATA SEE
 ORIGINAL DEDICATION PLAT IN
 BOOK 18, PAGES 16,17,18,19.

7' UTILITY & DRAINAGE EASEMENTS ACROSS
 THE FRONT OF EACH LOT AS INDICATED
 BY DASHED LINES EXCEPT AS OTHERWISE
 SHOWN.

FOR TAX PURPOSES ONLY

MTT 01-96