

PARTS OF SECTIONS 11,12,13,14, T.6N., R.3E., S.L.B. & M.

# CAUSEY ESTATES SUBDIVISION NO. 3

LOTS 119, 120, 122-126

IN WEBER COUNTY

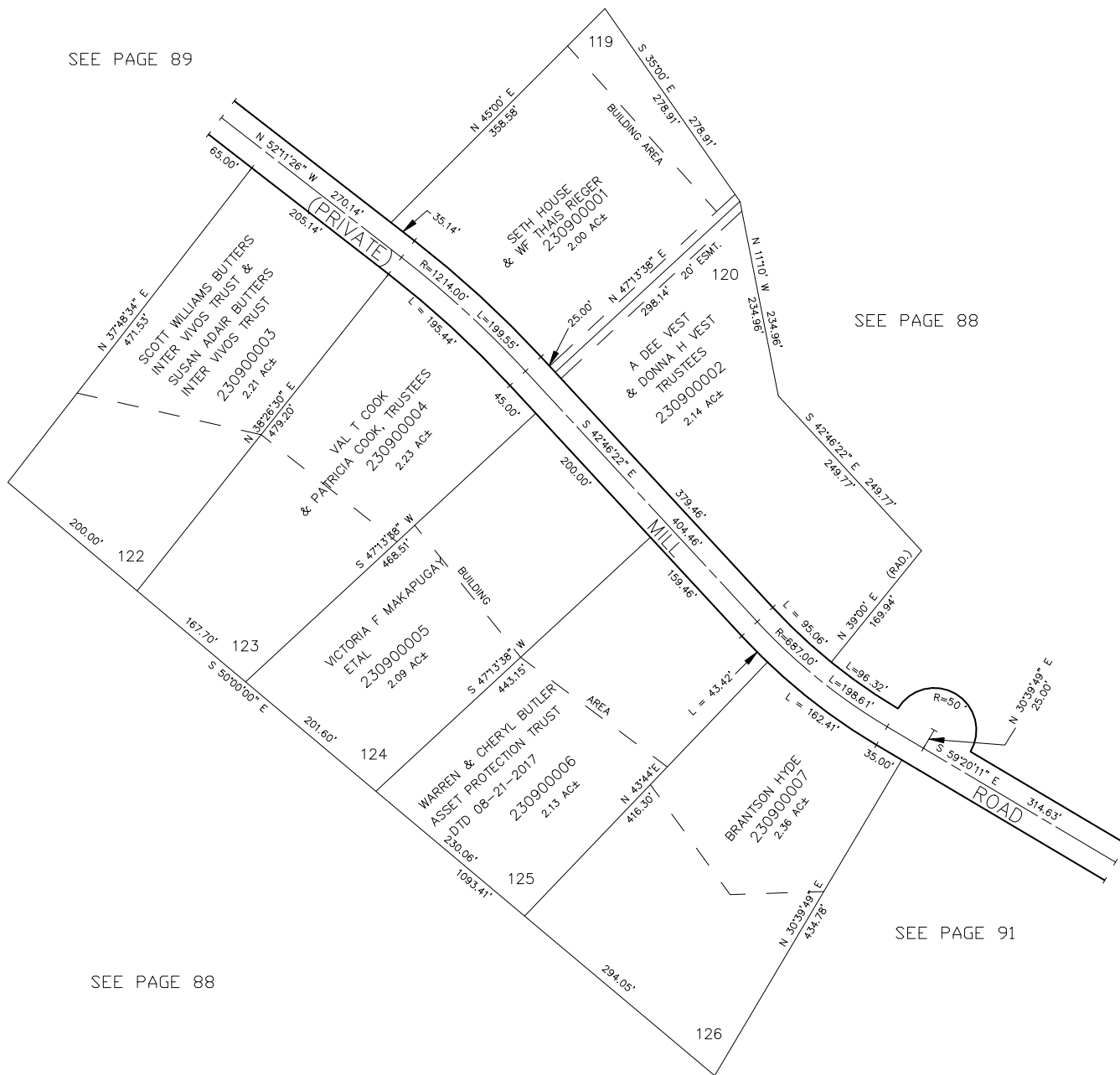
SCALE 1" = 100'

TAXING UNIT: 520

SEE PAGE 89

SEE PAGE 88

SEE PAGE 91



FOR COMPLETE ENG DATA SEE  
ORIGINAL DEDICATION PLAT IN  
BOOK 24, PAGES 38,39,40 OF RECORDS.

\*FOR TAX PURPOSES ONLY\*