

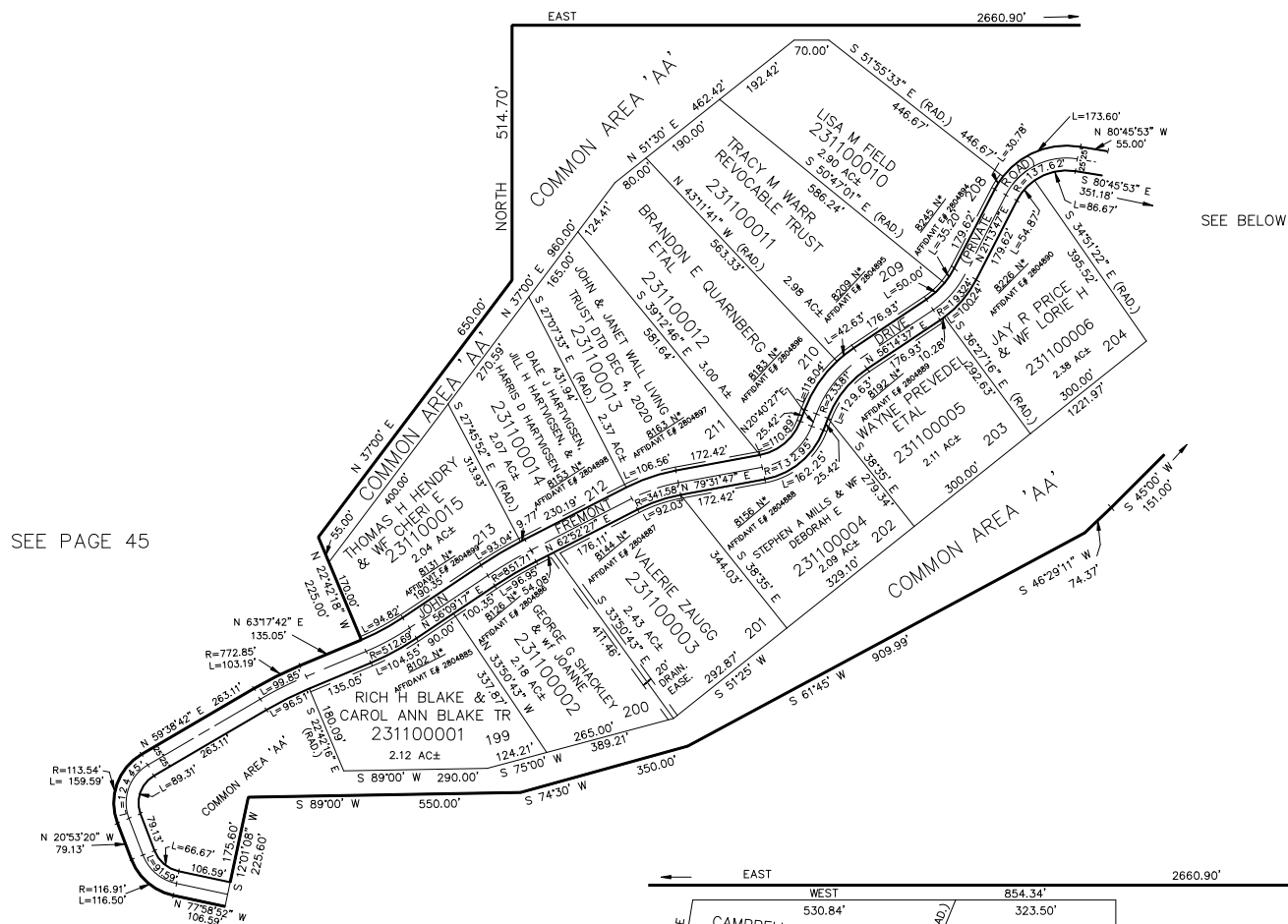
PT SEC 26, T.8N.,R.2E. & PT SEC 1, T.7N.,R.2E., S.L.B. & M.

SUNRIDGE HIGHLANDS NO. 8

IN WEBER COUNTY

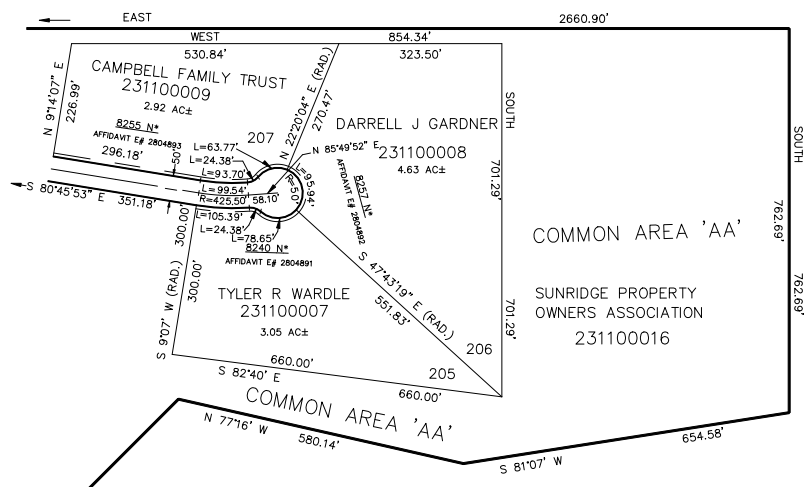
SCALE 1" = 200'

TAXING UNIT: 520



FOR COMPLETE ENG DATA SEE
ORIGINAL DEDICATION PLAT IN
BOOK 32, PAGE 59 OF RECORDS.

7' UTILITY & DRAINAGE EASEMENTS EACH
SIDE OF PROPERTY LINES AS INDICATED
BY DASHED LINES EXCEPT AS OTHERWISE
SHOWN.



FOR TAX PURPOSES ONLY