

PART OF THE NW 1/4, SEC. 33, T.7N., R.3E., S.L.B. & M.

114

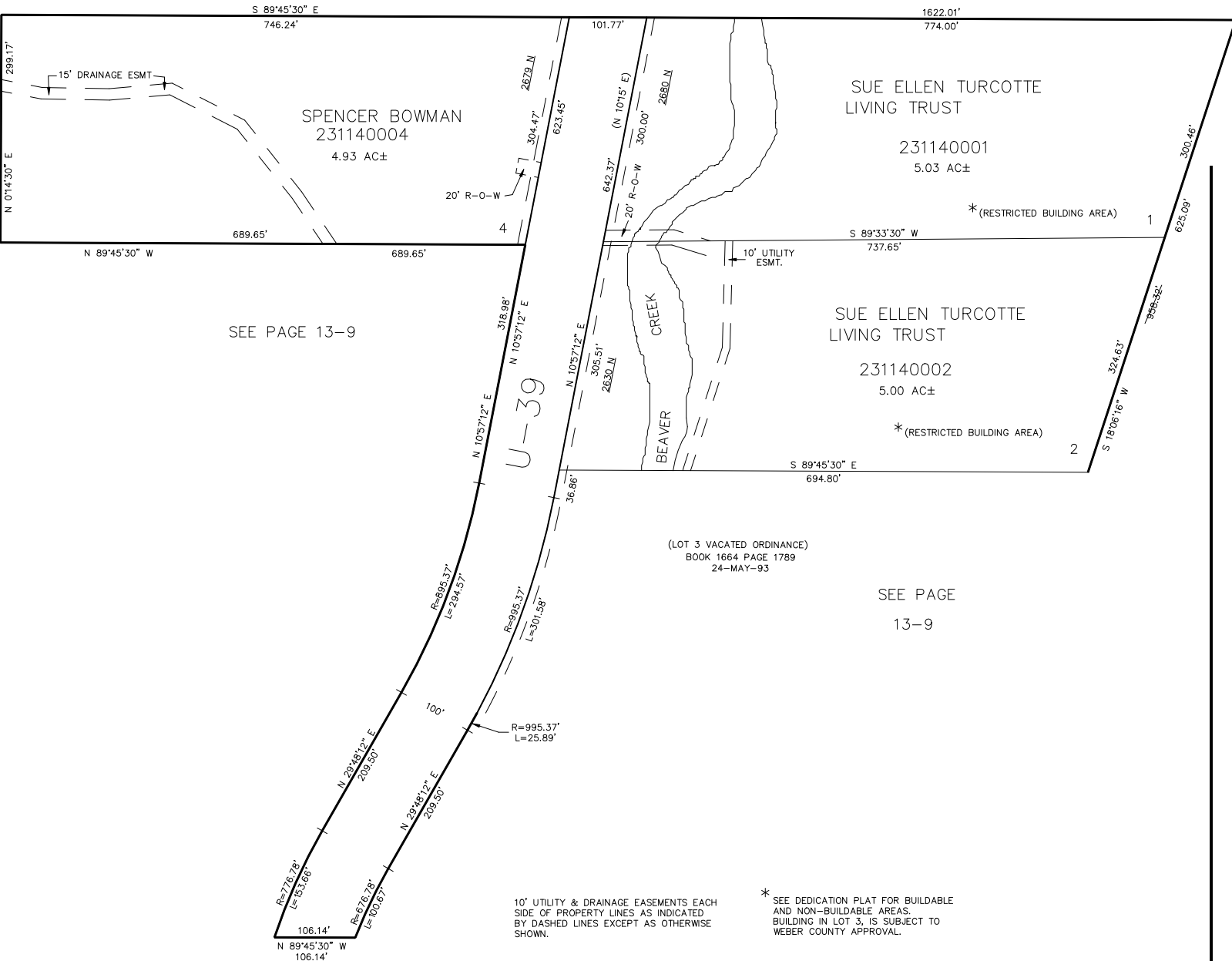
# KATHY PARK SUBDIVISION

IN WEBER COUNTY

TAXING UNIT: 520

SCALE 1" = 100'

SEE PAGE 15



10' UTILITY & DRAINAGE EASEMENTS EACH  
SIDE OF PROPERTY LINES AS INDICATED  
BY DASHED LINES EXCEPT AS OTHERWISE  
SHOWN.

\* SEE DEDICATION PLAT FOR BUILDABLE  
AND NON-BUILDABLE AREAS.  
BUILDING IN LOT 3, IS SUBJECT TO  
WEBER COUNTY APPROVAL.

FOR COMPLETE ENG DATA SEE  
ORIGINAL DEDICATION PLAT IN  
BOOK 35, PAGE 50 OF RECORDS.

\*FOR TAX PURPOSES ONLY\*

JAB 4-93