

PART OF THE E.1/2, OF SEC. 2, T.7N., R.2E.;
AND PART OF THE S.1/2, OF SEC. 26, & PART OF SEC. 35, T.8N., R.2E., S.L.B. & M.

SUNRIDGE HIGHLANDS NO. 11

TAXING UNIT: 520

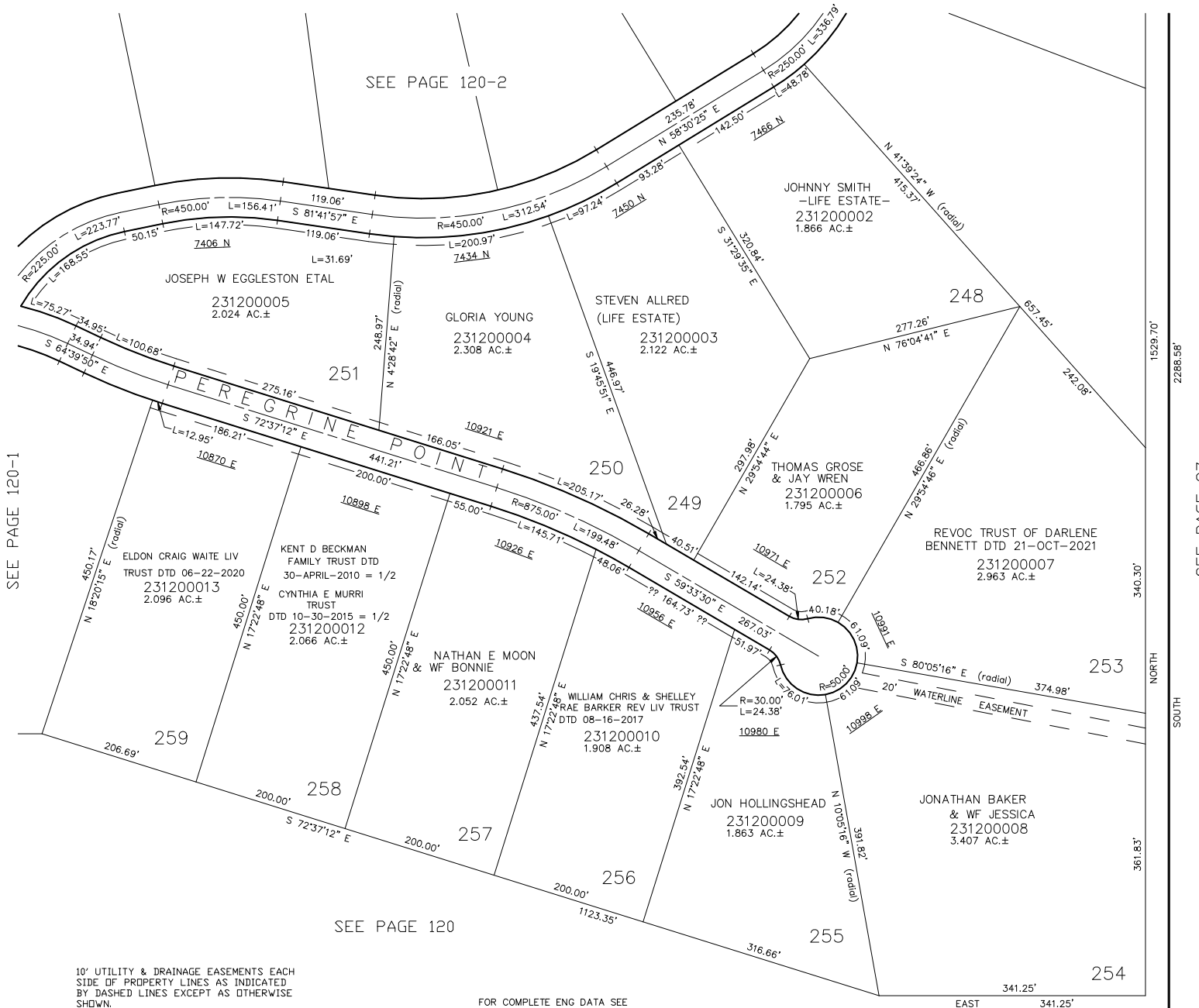
A CLUSTER SUMMER HOME SUBDIVISION

LOTS 248-259

IN WEBER COUNTY

SCALE 1" = 100'

SEE PAGE 120-2



10' UTILITY & DRAINAGE EASEMENTS EACH
SIDE OF PROPERTY LINES AS INDICATED
BY DASHED LINES EXCEPT AS OTHERWISE
SHOWN.

FOR COMPLETE ENG DATA SEE
ORIGINAL DEDICATION PLAT IN
BOOK 40, PAGES 93 & 94 OF RECORDS.