

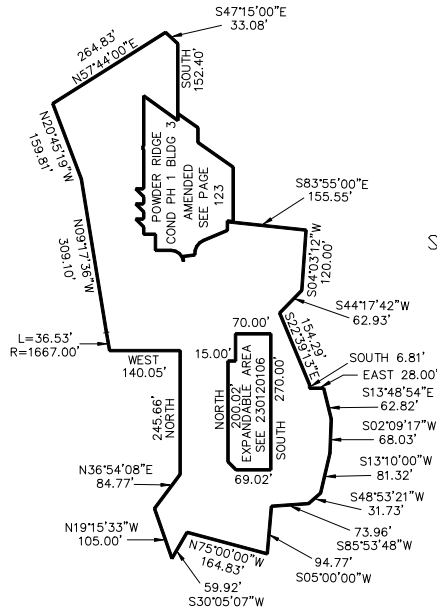
PART OF SECTION 6, T.7N., R.2E., S.L.B & M.
POWDER RIDGE CONDOMINIUMS PHASE 1 AMENDED
 IN WEBER COUNTY
 SCALE 1" = 200'

122

TAXING UNIT: 548

STRUCTURE NUMBER	4-PLEX DESG.	UNIT	SERIAL NUMBER	NAMES OF OWNERSHIP	STRUCTURE NUMBER	4-PLEX DESG.	UNIT	SERIAL NUMBER	NAMES OF OWNERSHIP	
2	A	1	231220001	POWDER MOUNTAIN PROPERTIES LLC	9	A	1	231220019	POWDER MOUNTAIN PROPERTIES LLC	
		2	231220002	POWDER MOUNTAIN PROPERTIES LLC			2	231220020	POWDER MOUNTAIN PROPERTIES LLC	
		3	231220003	POWDER MOUNTAIN PROPERTIES LLC			3	231220021	POWDER MOUNTAIN PROPERTIES LLC	
		4	231220004	POWDER MOUNTAIN PROPERTIES LLC			4	231220022	POWDER RIDGE VILLAGE OWNERS ASSN INC	
		5	231220005	POWDER MOUNTAIN PROPERTIES LLC			5	231220023	POWDER RIDGE VILLAGE OWNERS ASSN INC	
		6	231220006	POWDER MOUNTAIN PROPERTIES LLC			6	231220024	POWDER RIDGE VILLAGE OWNERS ASSN INC	
	B	1	231220007	POWDER MOUNTAIN PROPERTIES LLC (BRENT BOURGEOIS ETAL-CLAIMS-)	10	A	1	231220025	POWDER MOUNTAIN PROPERTIES LLC	
		2	231220008	POWDER MOUNTAIN PROPERTIES LLC			2	231220026	POWDER MOUNTAIN PROPERTIES LLC	
		3	231220009	POWDER MOUNTAIN PROPERTIES LLC			3	231220027	POWDER MOUNTAIN PROPERTIES LLC	
		4	231220010	POWDER MOUNTAIN PROPERTIES LLC			4	231220028	POWDER MOUNTAIN PROPERTIES LLC	
		5	231220011	POWDER MOUNTAIN PROPERTIES LLC		B	1*	231220029	POWDER MOUNTAIN PROPERTIES LLC	
		6	231220012	POWDER MOUNTAIN PROPERTIES LLC			2*	231220030	POWDER MOUNTAIN PROPERTIES LLC	
	C	1	231220013	POWDER MOUNTAIN PROPERTIES LLC			3	231220031	POWDER MOUNTAIN PROPERTIES LLC	
		2	231220014	POWDER MOUNTAIN PROPERTIES LLC			4	231220032	POWDER MOUNTAIN PROPERTIES LLC	
		3	231220015	POWDER MOUNTAIN PROPERTIES LLC	*AFFIDAVIT E#1998657 15-DEC-2003					
		4	231220016	POWDER MOUNTAIN PROPERTIES LLC						
		5	231220017	POWDER MOUNTAIN PROPERTIES LLC						
		6	231220018	POWDER MOUNTAIN PROPERTIES LLC	COMMON AREA		231220034	COMMON AREA (CHAMONIX CAPITAL I LLC CLAIMS PT)		

SEE PAGE 12



SEE PAGE 12

SEE PAGE 12

FOR COMPLETE ENG DATA SEE
 ORIGINAL DEDICATION PLAT IN
 BOOK 58, PAGES 72 TO 75 OF
 RECORDS.

FOR TAX PURPOSES ONLY