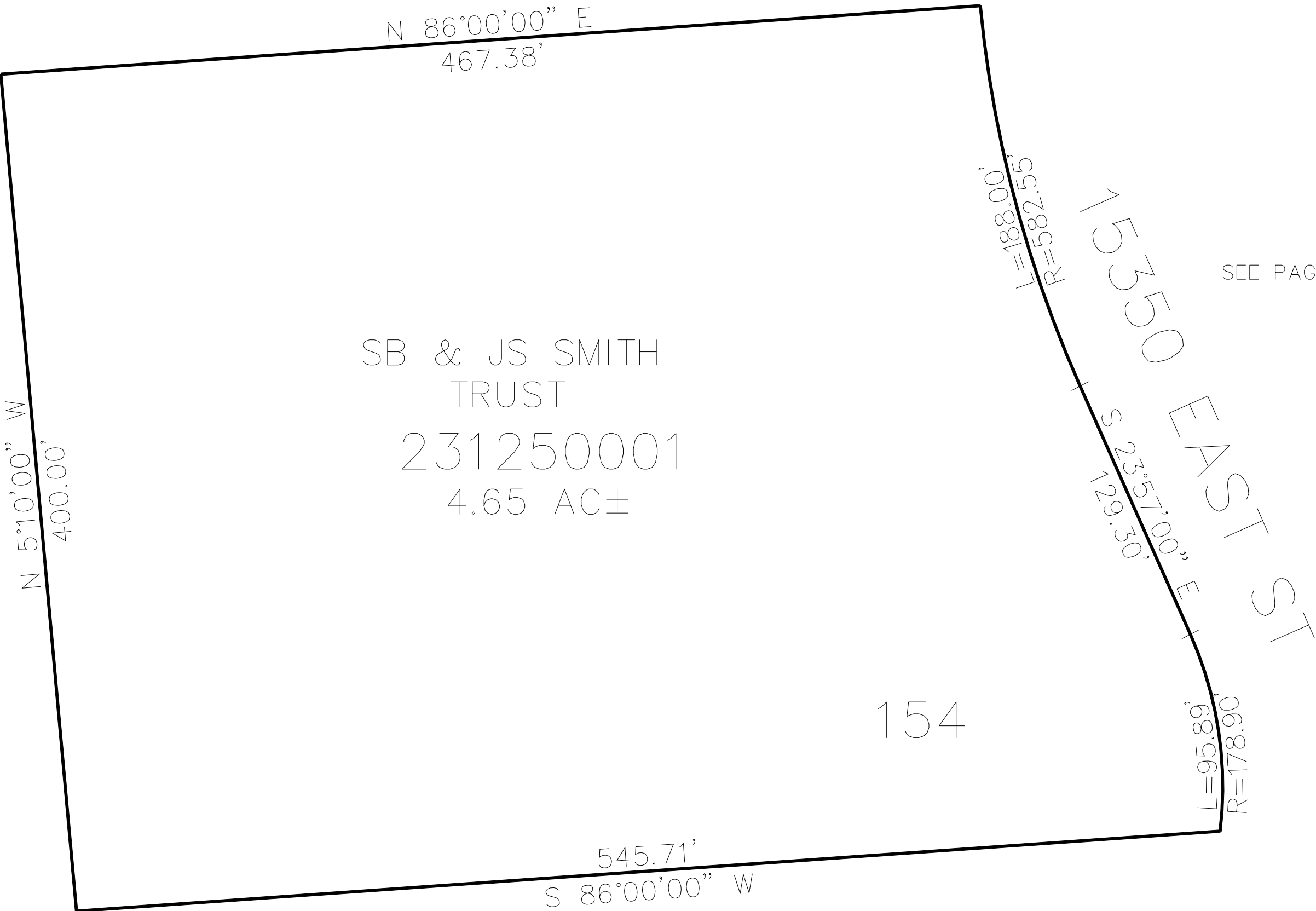


PART OF THE SW.1/4, OF SECTION 11, T.6N., R.3E., S.L.B. & M.
CAUSEY ESTATES SUBDIVISION No.1 – 1ST AMENDMENT

TAXING UNIT: 520

IN WEBER COUNTY
SCALE 1" = 50'

SEE PAGE 63



SEE PAGE 63

SEE PAGE 63

10' UTILITY & DRAINAGE EASEMENTS EACH
SIDE OF PROPERTY LINES AS INDICATED
BY DASHED LINES EXCEPT AS OTHERWISE
SHOWN.

FOR COMPLETE ENG DATA SEE
ORIGINAL DEDICATION PLAT IN
BOOK 71, PAGE 31 OF RECORDS.