

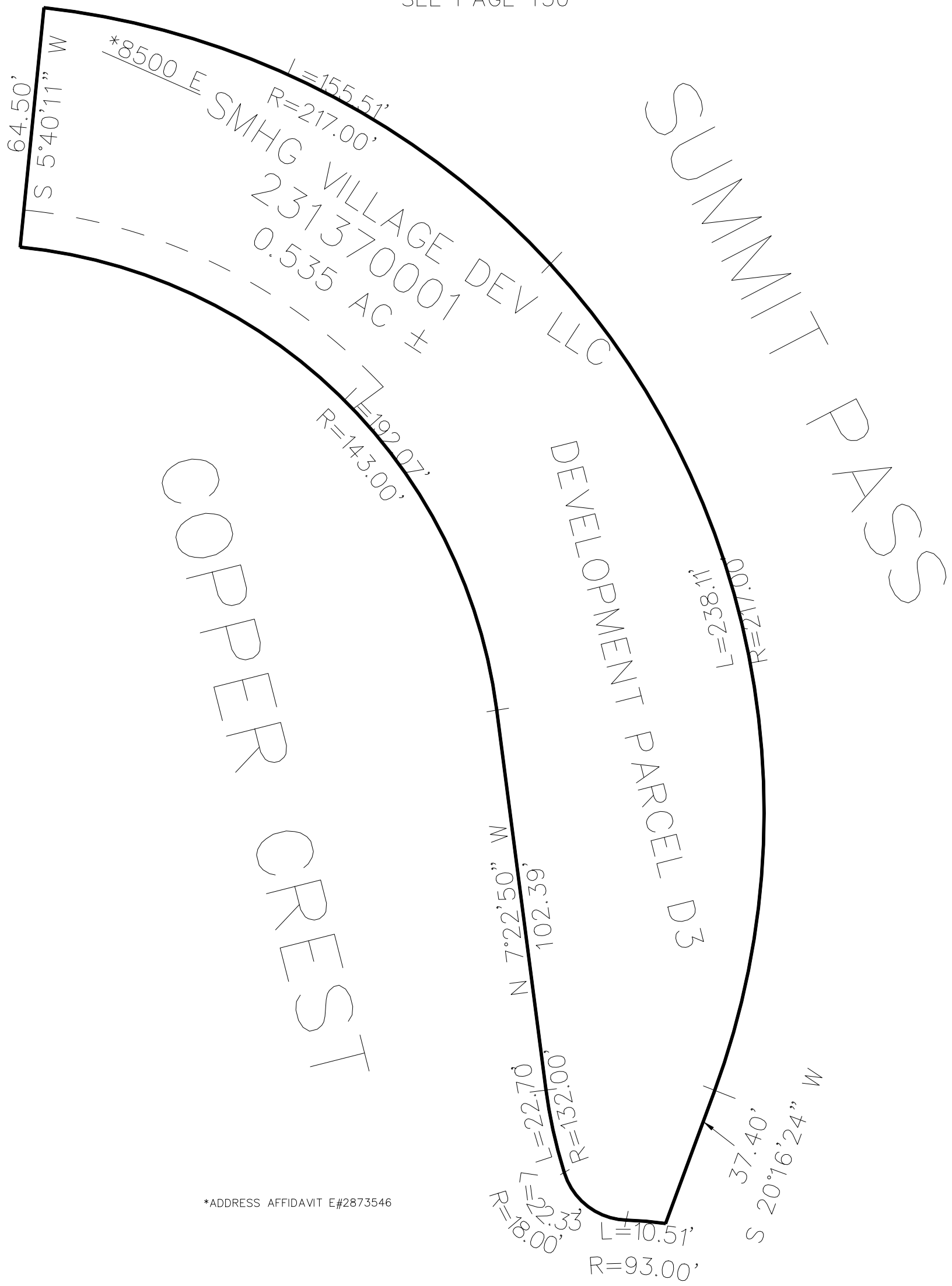
PART OF THE NE 1/4, OF SECTION 8, T.7N., R.2E., S.L.B. & M.
SUMMIT EDEN PHASE 1C AMENDMENT 2

137

TAXING UNIT: 491

IN WEBER COUNTY
SCALE 1" = 30'

SEE PAGE 130



*ADDRESS AFFIDAVIT E#2873546

10' UTILITY & DRAINAGE EASEMENTS EACH
SIDE OF PROPERTY LINES AS INDICATED
BY DASHED LINES EXCEPT AS OTHERWISE
SHOWN.

FOR COMPLETE ENG DATA SEE
ORIGINAL DEDICATION PLAT IN
BOOK 78, PAGE 77 OF RECORDS.