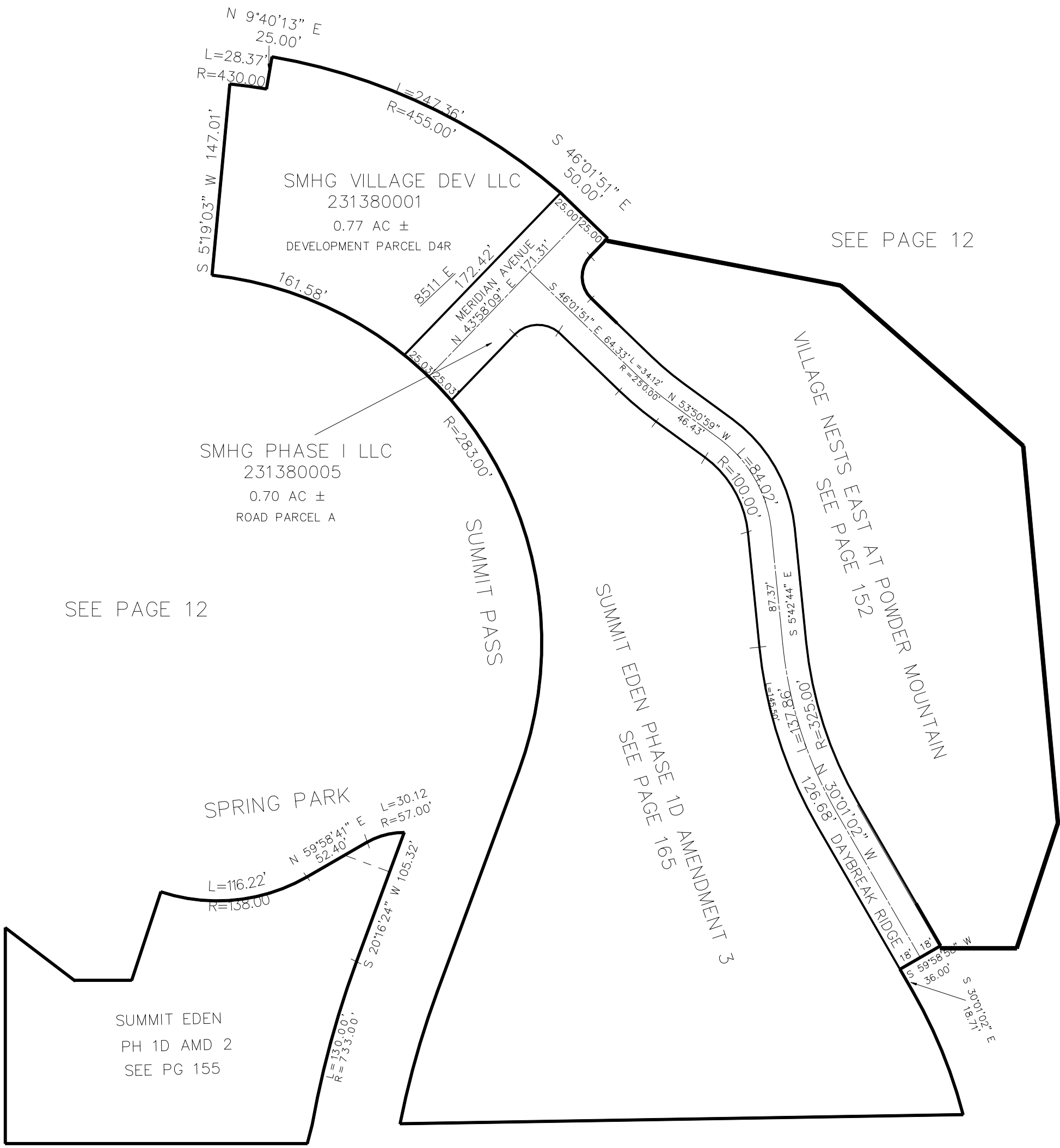


PART OF THE NE 1/4, OF SECTION 8, T.7N., R.2E., S.L.B. & M.
SUMMIT EDEN PH 1D AMENDMENT 1

138

IN WEBER COUNTY
SCALE 1" = 80'

TAXING UNIT: 491



10' UTILITY & DRAINAGE EASEMENTS EACH
SIDE OF PROPERTY LINES AS INDICATED
BY DASHED LINES EXCEPT AS OTHERWISE
SHOWN.

SEE PAGE 12

FOR COMPLETE ENG DATA SEE
ORIGINAL DEDICATION PLAT IN
BOOK 78, PAGE 79 OF RECORDS.