

SW 1/4 OF SEC 5, SOUTH 1/2 SEC 6, NORTH 1/2 SEC 7 & NORTHWEST 1/4 SEC 8, T.7N., R.2E., S.L.B. & M.

143

SUMMIT EDEN PHASE 1A, AMENDMENT 3

IN WEBER COUNTY

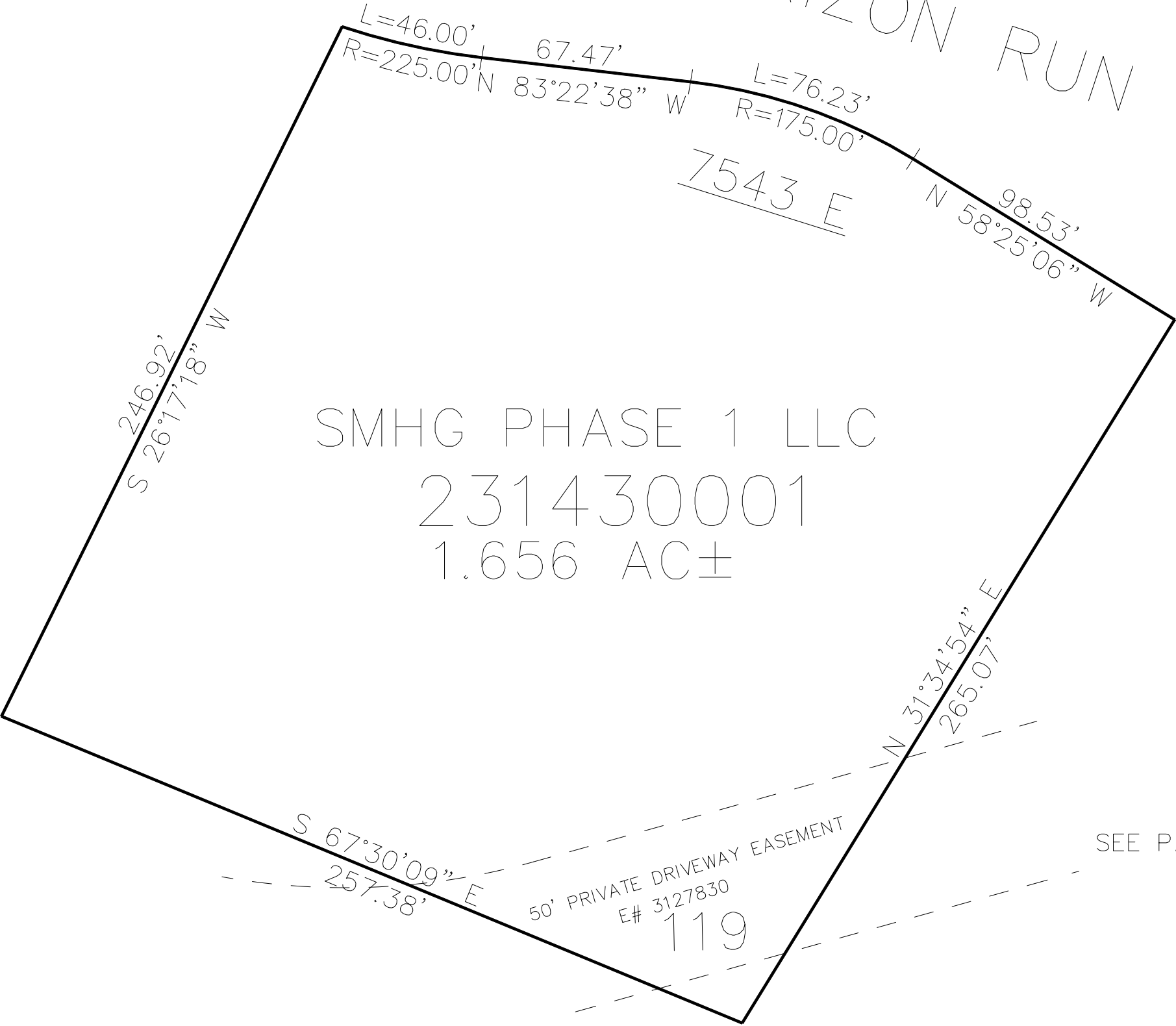
TAXING UNIT: 546

SCALE 1" = 40'

SEE PAGE 128

SEE PAGE 128

HORIZON RUN



SEE PAGE 12

10' UTILITY & DRAINAGE EASEMENTS EACH
SIDE OF PROPERTY LINES AS INDICATED
BY DASHED LINES EXCEPT AS OTHERWISE
SHOWN.

FOR COMPLETE ENG DATA SEE
ORIGINAL DEDICATION PLAT IN
BOOK 79, PAGE 75 & 76 OF RECORDS.