

PART OF THE SW. 1/4, OF SECTION 5, T.7N., R.2E., S.L.B. & M.
SUMMIT EDEN PHASE 1B AMENDMENT 1

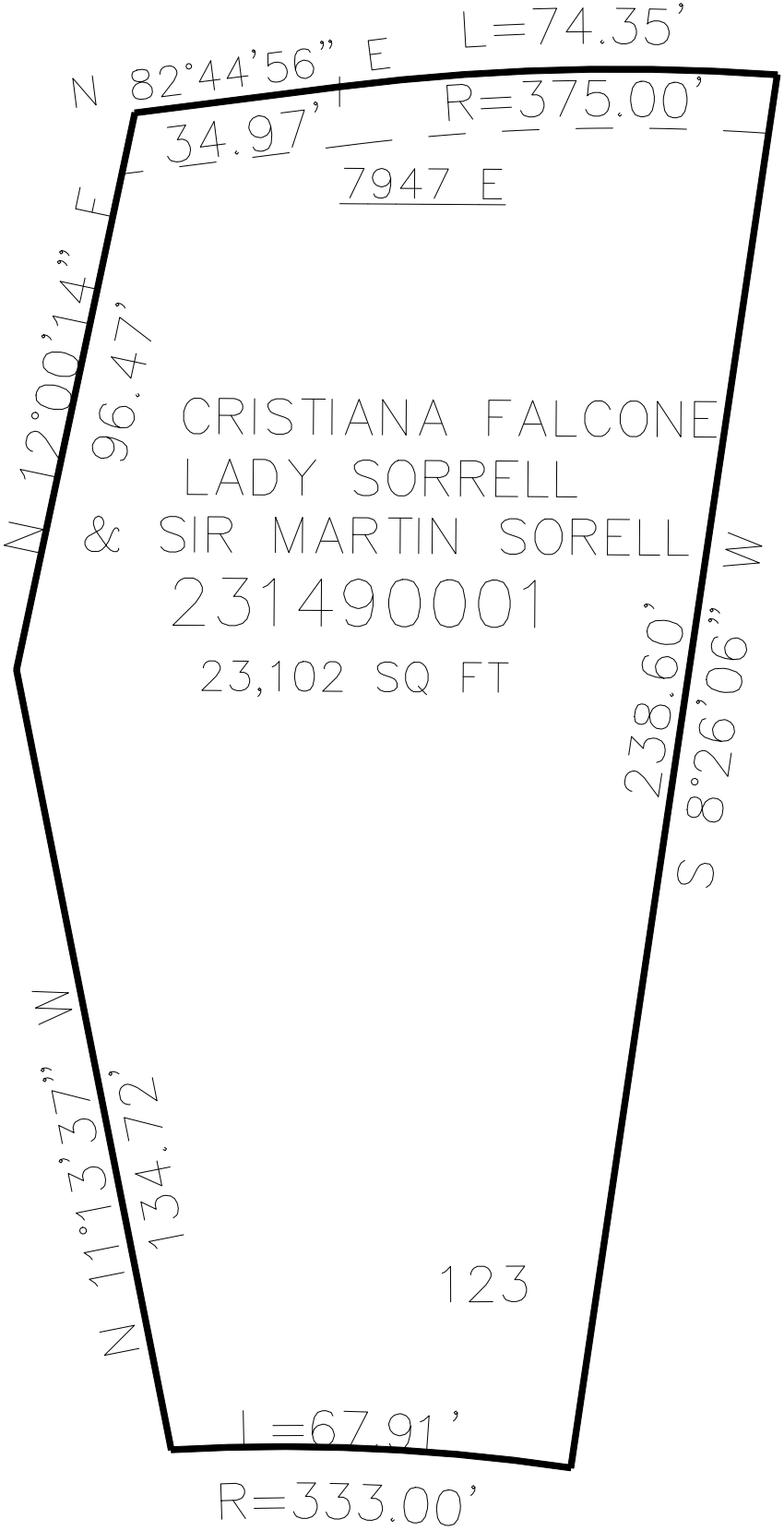
149

TAXING UNIT: 546

IN WEBER COUNTY
SCALE 1" = 30'

SEE PAGE 129

HEARTWOOD DRIVE (6110 NORTH ST)



SUMMIT PASS

SEE PAGE 129

10' UTILITY & DRAINAGE EASEMENTS EACH
SIDE OF PROPERTY LINES AS INDICATED
BY DASHED LINES EXCEPT AS OTHERWISE
SHOWN.

FOR COMPLETE ENG DATA SEE
ORIGINAL DEDICATION PLAT IN
BOOK 80, PAGE 83 & 84 OF RECORDS.