

PART OF THE NE. 1/4, OF SECTION 8, T.7N., R.2E., S.L.B. & M.  
SUMMIT EDEN PHASE 1D AMENDMENT 2

IN WEBER COUNTY

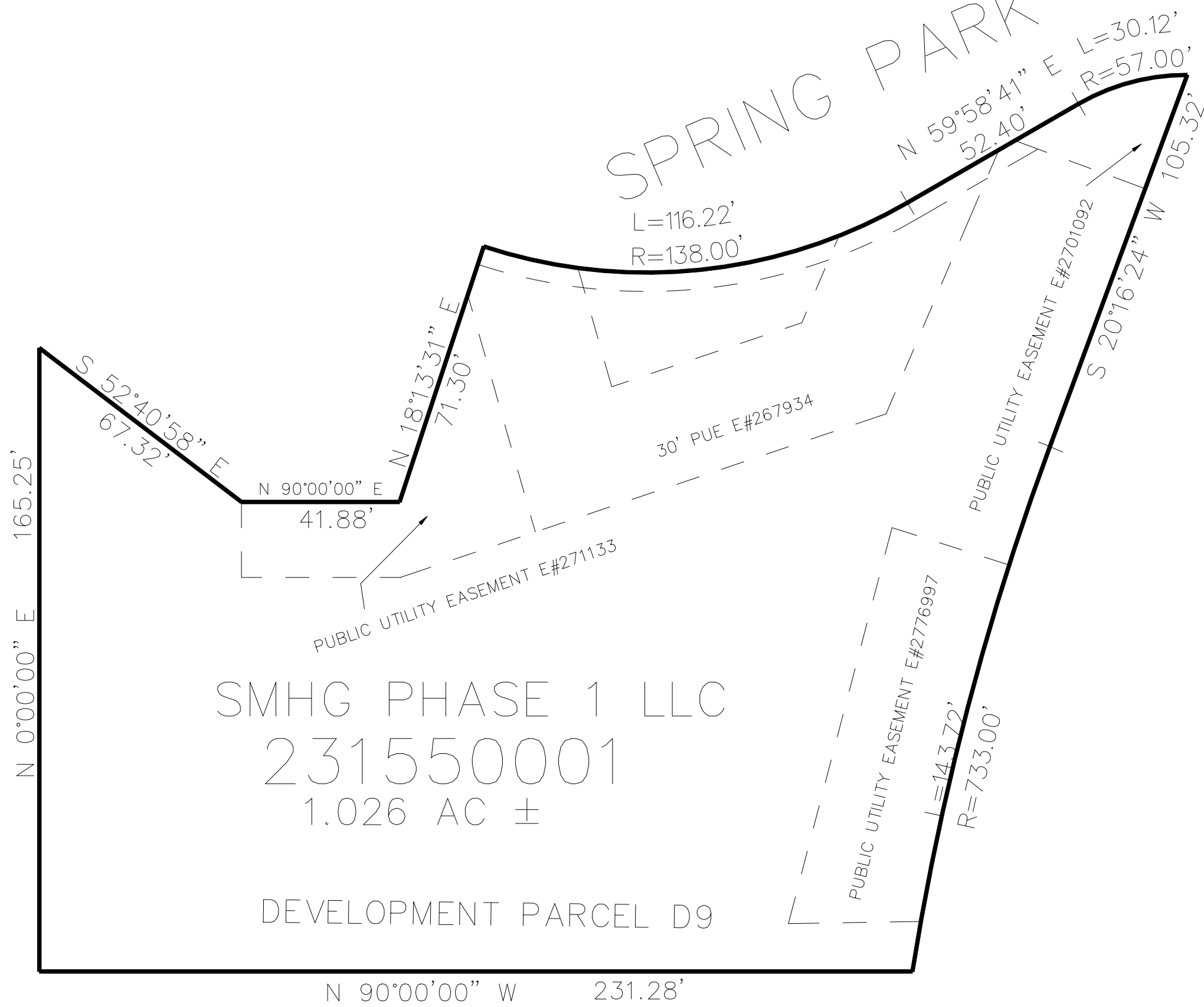
TAXING UNIT: 491

SCALE 1" = 30'

155

SEE PAGE 12

SPRING PARK



SEE PAGE 12

SEE PAGE 12

SEE PAGE 12

5' UTILITY & DRAINAGE EASEMENTS EACH  
SIDE OF PROPERTY LINES AS INDICATED  
BY DASHED LINES EXCEPT AS OTHERWISE  
SHOWN.

FOR COMPLETE ENG DATA SEE  
ORIGINAL DEDICATION PLAT IN  
BOOK 83, PAGE 19 & 20 OF RECORDS.