

PART OF THE NE.1/4, OF SECTION 8, T.7N., R.2E., S.L.B. & M.
SUMMIT EDEN PHASE 1C AMENDMENT 8

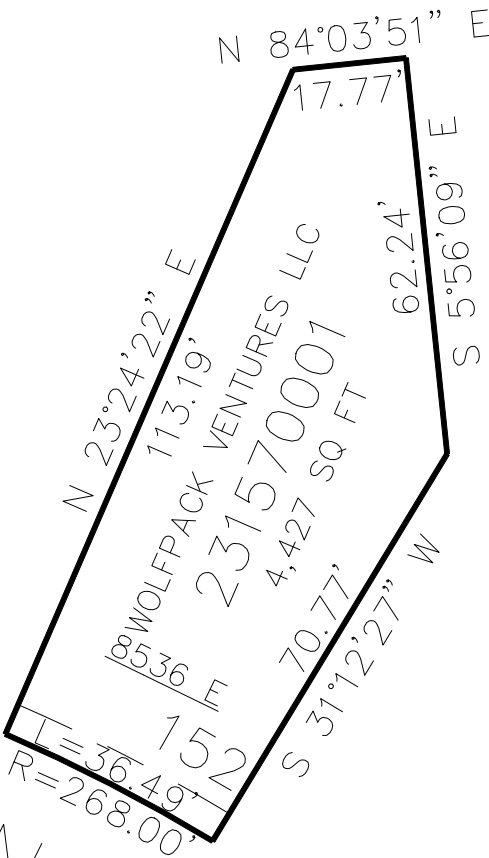
157

TAXING UNIT: 491

IN WEBER COUNTY
SCALE 1" = 30'

SEE PAGE 130

SEE PAGE 130



SEE PAGE 130

SPRING PARK

SEE PAGE 130

10' UTILITY & DRAINAGE EASEMENTS EACH
SIDE OF PROPERTY LINES AS INDICATED
BY DASHED LINES EXCEPT AS OTHERWISE
SHOWN.

FOR COMPLETE ENG DATA SEE
ORIGINAL DEDICATION PLAT IN
BOOK 84, PAGE 71 & 72 OF RECORDS.