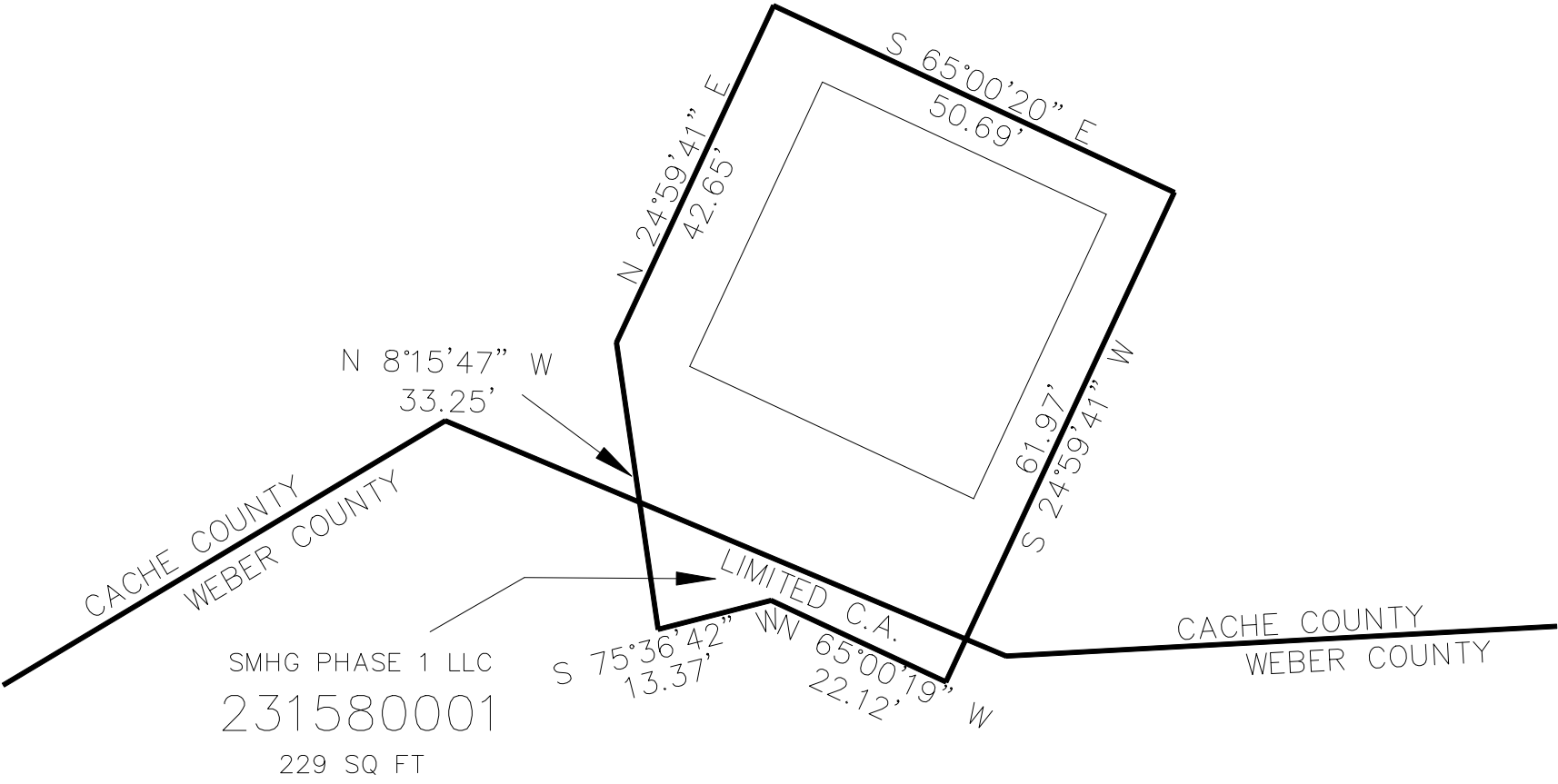


PART OF THE S.1/2, OF SECTION 5, T.7N., R.2E., S.L.B. & M.
SUMMIT EDEN RIDGE NESTS PRUD AMENDMENT 3

158

TAXING UNIT: 546

IN WEBER COUNTY
SCALE 1" = 20'



10' UTILITY & DRAINAGE EASEMENTS EACH
SIDE OF PROPERTY LINES AS INDICATED
BY DASHED LINES EXCEPT AS OTHERWISE
SHOWN.

FOR COMPLETE ENG DATA SEE
ORIGINAL DEDICATION PLAT IN
BOOK 85, PAGE 46 OF RECORDS.