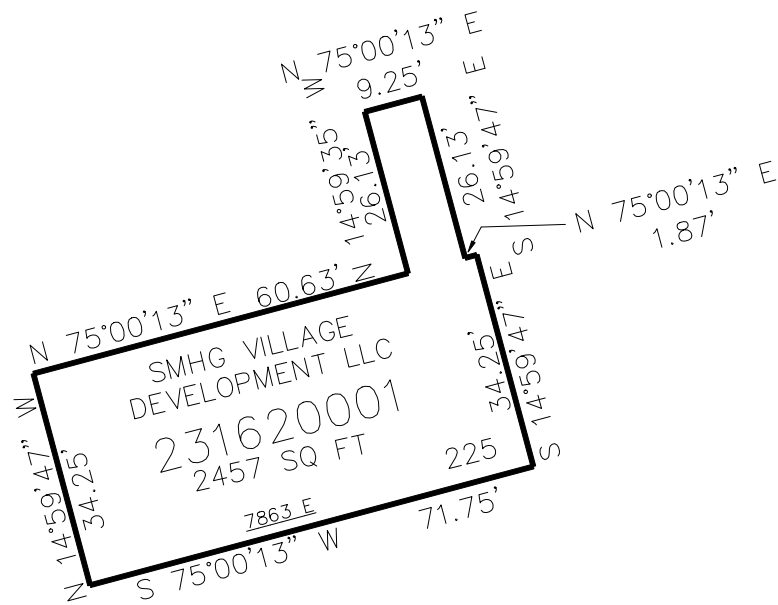


PART OF THE SE. 1/4, OF SECTION 6, T.7N., R.2E., S.L.B. & M.  
HORIZON NEIGHBORHOOD AT POWDER MOUNTAIN PRUD AMENDMENT 2

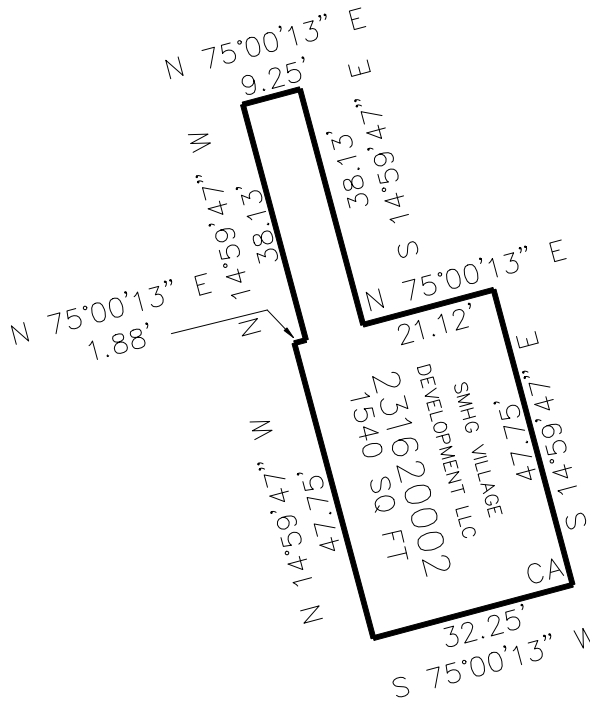
IN WEBER COUNTY  
SCALE 1" = 30'

TAXING UNIT: 546

SEE PAGE 151



SEE PAGE 151



SEE PAGE 151

10' UTILITY & DRAINAGE EASEMENTS EACH  
SIDE OF PROPERTY LINES AS INDICATED  
BY DASHED LINES EXCEPT AS OTHERWISE  
SHOWN.

FOR COMPLETE ENG DATA SEE  
ORIGINAL DEDICATION PLAT IN  
BOOK 86, PAGE 51 & 52 OF RECORDS.

\*FOR TAX PURPOSES ONLY\*