

PART OF THE NE. 1/4, OF SECTION 8, T.7N., R.2E., S.L.B. & M.
SUMMIT EDEN PHASE 1D AMENDMENT 3

165

IN WEBER COUNTY

TAXING UNIT: 491

SCALE 1" = 60'

SEE PAGE 138

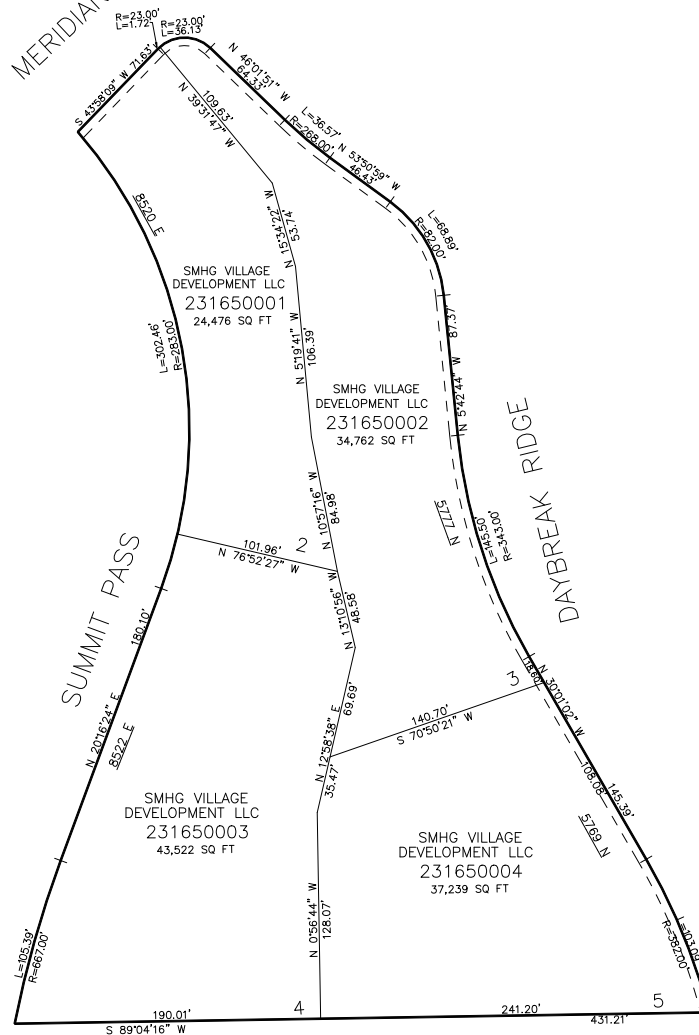
MERIDIAN AVE

SEE PAGE 138

SUMMIT PASS

DAYBREAK RIDGE

SEE PAGE 138



SEE PAGE 138

FOR COMPLETE ENC DATA SEE
 ORIGINAL DEDICATION PLAT IN
 BOOK 90, PAGE 92,93 OF RECORDS.

10' UTILITY & DRAINAGE EASEMENTS EACH
 SIDE OF PROPERTY LINES AS INDICATED
 BY DASHED LINES EXCEPT AS OTHERWISE
 SHOWN.