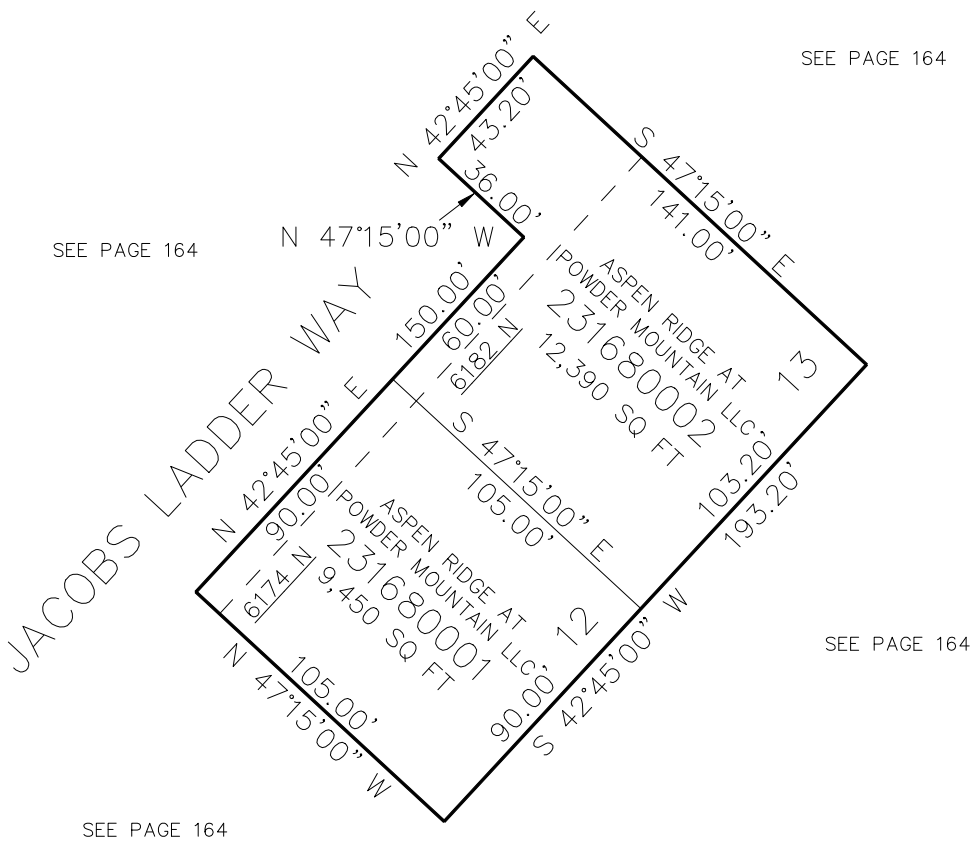


PART OF SECTION 6, T.7N., R.2E., S.L.B. & M.
ASPEN RIDGE AT POWDER MOUNTAIN 1ST AMENDMENT

IN WEBER COUNTY
SCALE 1" = 30'

TAXING UNIT: 542



10' UTILITY & DRAINAGE EASEMENTS EACH
SIDE OF PROPERTY LINES AS INDICATED
BY DASHED LINES EXCEPT AS OTHERWISE
SHOWN.

FOR COMPLETE ENG DATA SEE
ORIGINAL DEDICATION PLAT IN
BOOK 92, PAGE 23 OF RECORDS.