

PART OF THE E 1/2, SEC. 32 & THE W 1/2, SEC. 33, T.7N., R.2W., S.L.B. & M.

30

PLAIN CITY
BLOCK 6, PLAT A

TAXING UNIT: 21, 296

SCALE 1" = 50'

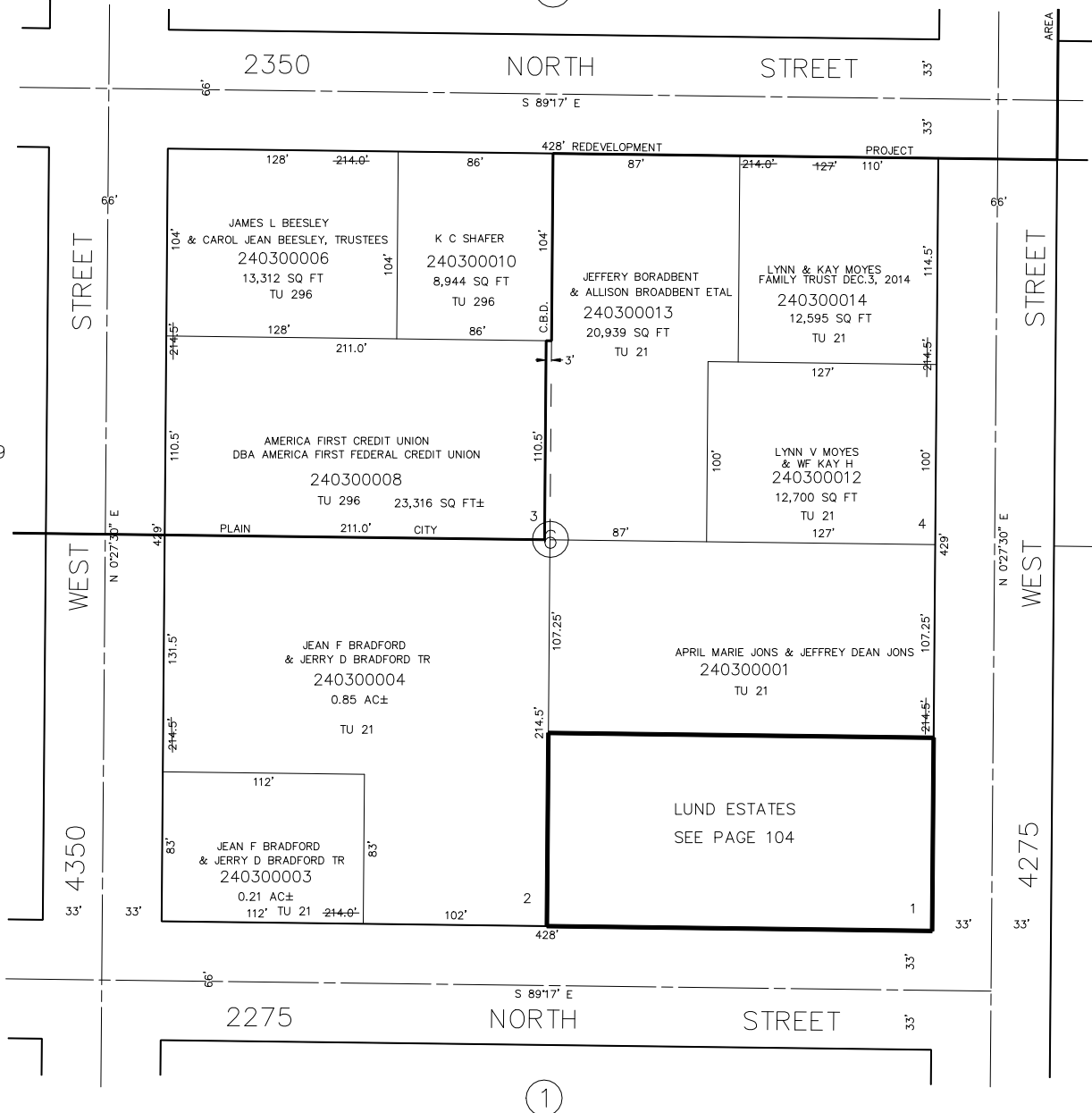
SEE PAGE 31

7

SEE PAGE 29

5

SEE PLAT B
PAGE 51



SEE PAGE 25

SEE ORIGINAL DEDICATION
PLAT OF PLAIN CITY IN
BOOK 5, PAGE 80 OF RECORDS.

FOR TAX PURPOSES ONLY

L.D.F. 6-92