

PART OF THE NW.1/4, OF SECTION 33, T.7N., R.2W., S.L.B. & M.

BETH'S PLACE SUBDIVISION

IN PLAIN CITY

TAXING UNIT: 21

SCALE 1" = 30'

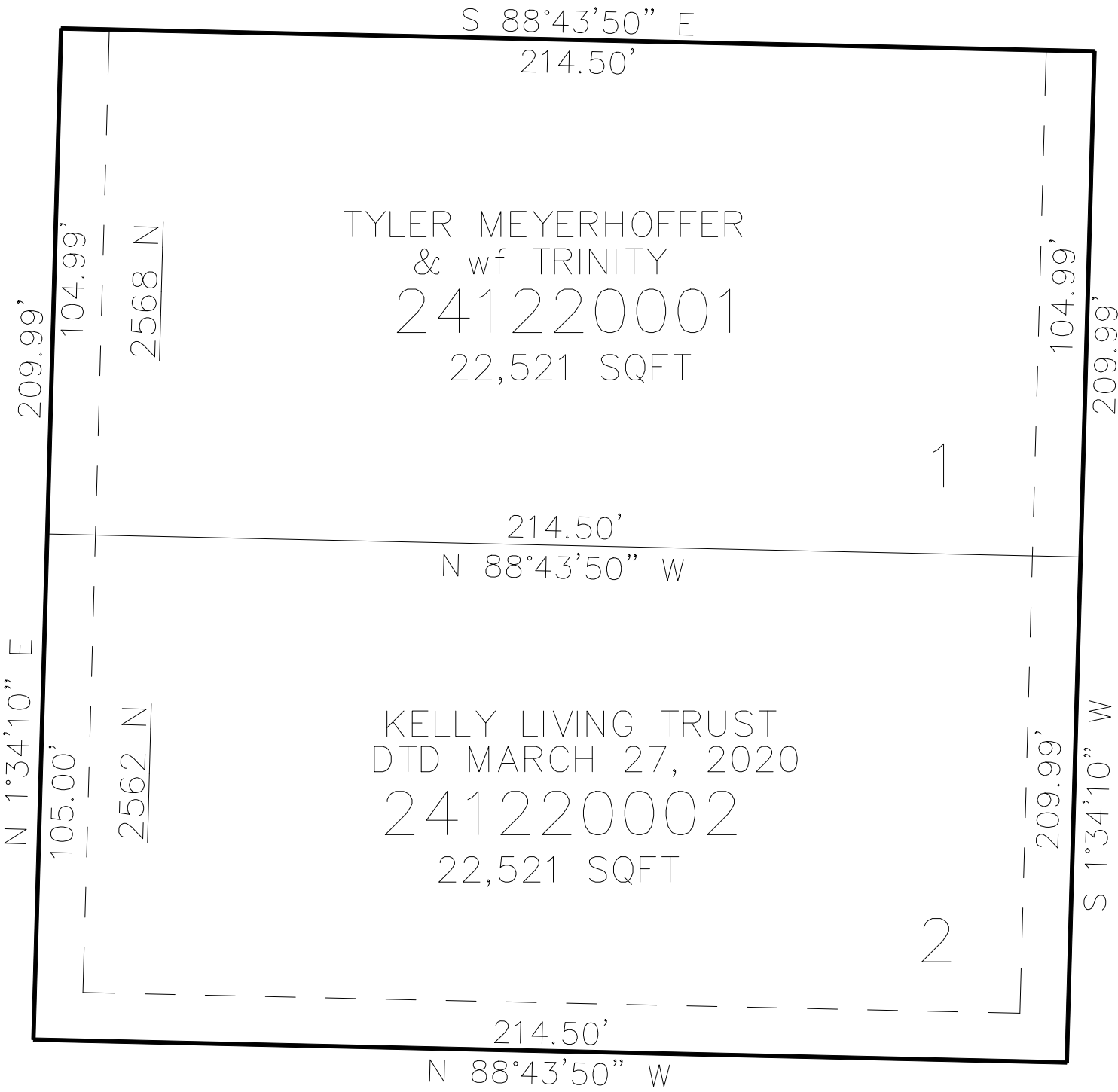
SEE PAGE 51

2575 NORTH ST

4275 WEST ST

SEE PAGE 51

SEE PAGE 51



SEE PAGE 51

10' UTILITY & DRAINAGE EASEMENTS EACH SIDE OF PROPERTY LINES AS INDICATED BY DASHED LINES EXCEPT AS OTHERWISE SHOWN.

FOR COMPLETE ENG DATA SEE ORIGINAL DEDICATION PLAT IN BOOK 74, PAGE 90 OF RECORDS.