

PART OF THE NE. 1/4, OF SECTION 32, T.7N., R.2W., S.L.B. & M.  
OLD ROCK HOUSE SUBDIVISION 1ST AMENDMENT

140

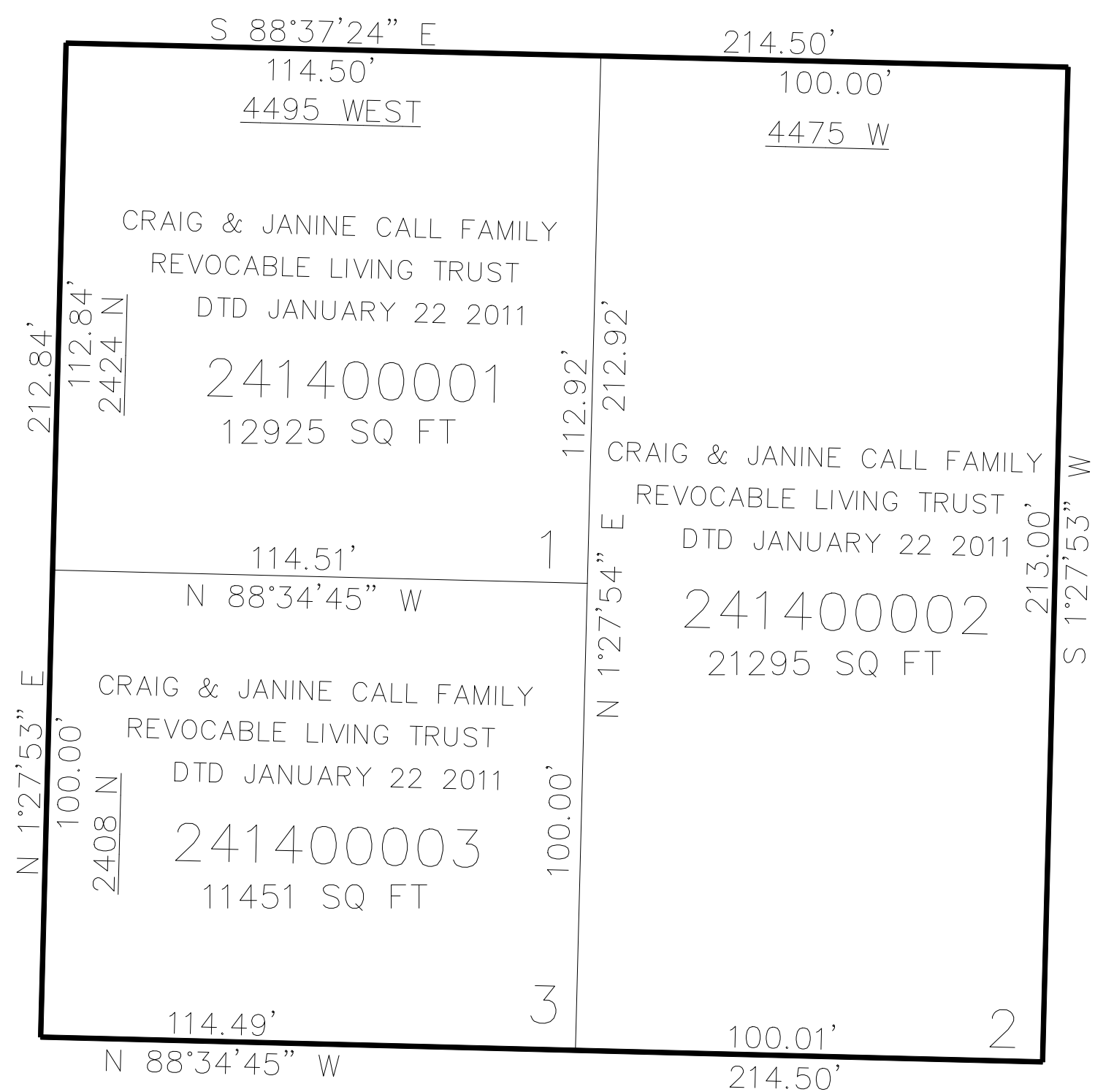
TAXING UNIT: 296

IN WEBER COUNTY

SCALE 1" = 30'

2425 NORTH STREET

4500 WEST STREET



SEE PAGE 33

10' UTILITY & DRAINAGE EASEMENTS EACH  
SIDE OF PROPERTY LINES AS INDICATED  
BY DASHED LINES EXCEPT AS OTHERWISE  
SHOWN.

FOR COMPLETE ENG DATA SEE  
ORIGINAL DEDICATION PLAT IN  
BOOK 81, PAGE 78 OF RECORDS.