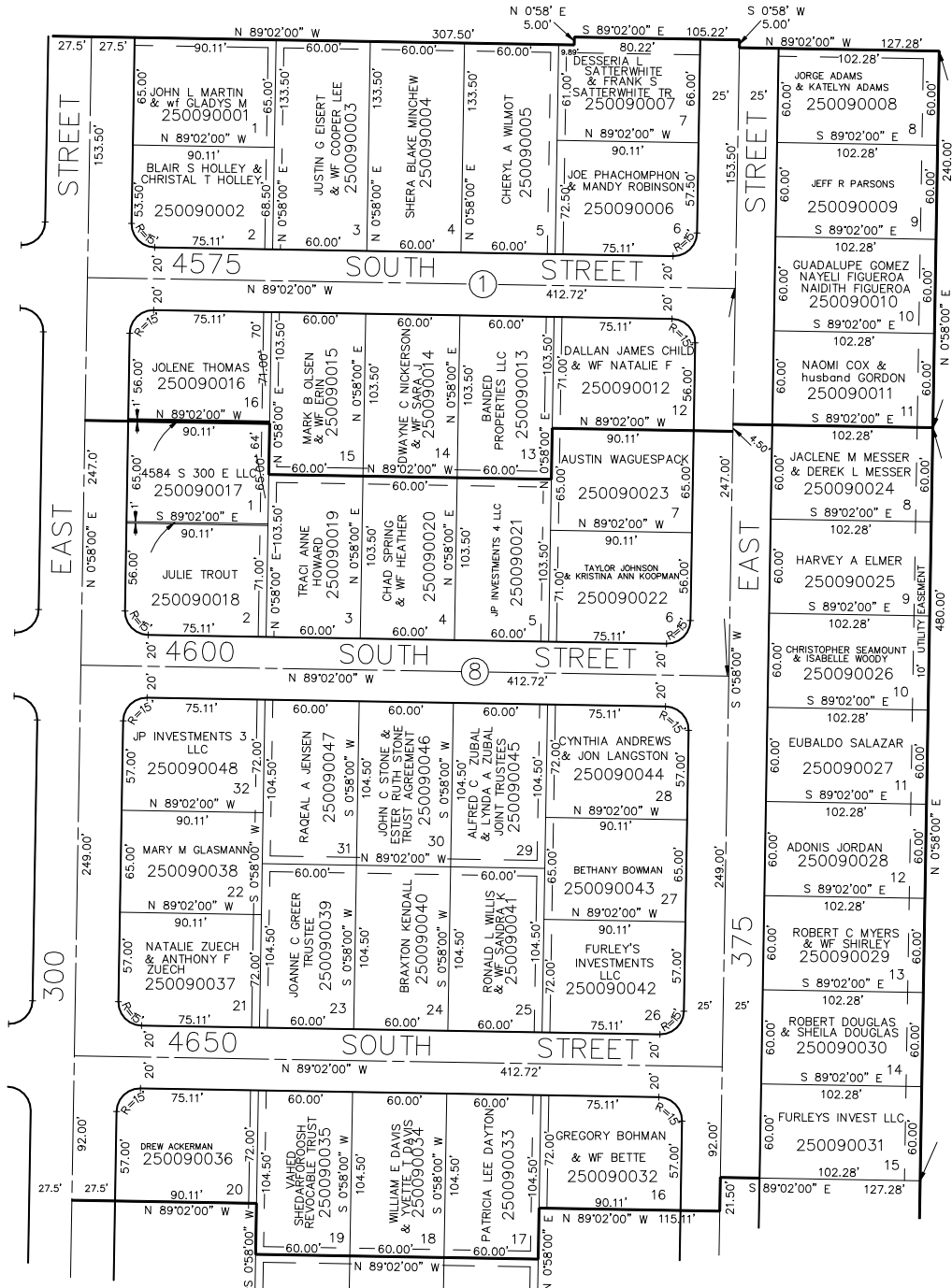


TAXING UNIT: 24

BLOCKS 1 & 8
IN WASHINGTON TERRACE CITY
SCALE 1" = 60'

SEE PAGE 6



SEE PAGE 10

SEE BOOK 6,
PAGE 19

FOR COMPLETE ENG DATA SEE
ORIGINAL DEDICATION PLAT IN
BOOK 11, PAGE 52 OF RECORDS.

5' UTILITY & DRAINAGE EASEMENTS EACH
SIDE OF PROPERTY LINES AS INDICATED
BY DASHED LINES EXCEPT AS OTHERWISE
SHOWN.

SEE PAGE 14

FOR TAX PURPOSES ONLY