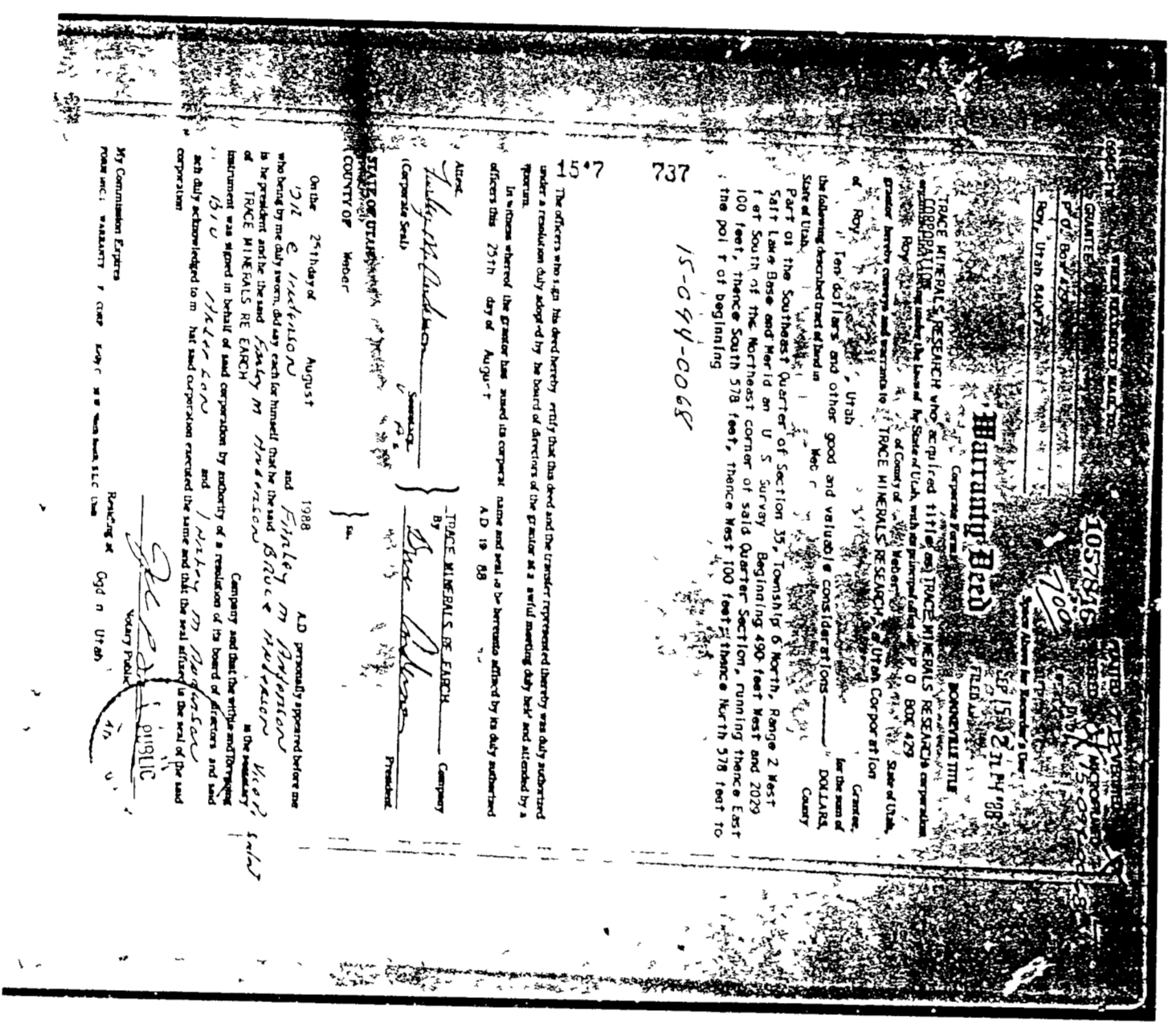
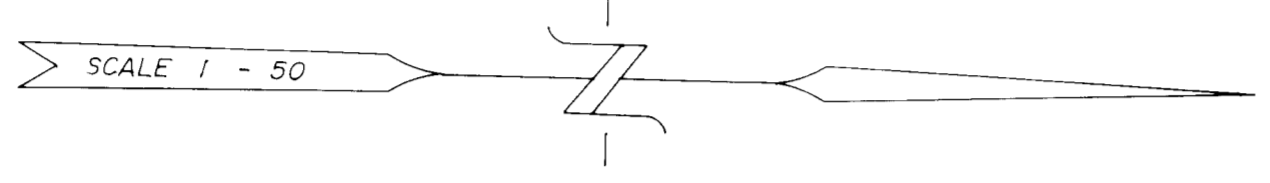


SOUTH 1/4 CORNER MONUMENT
EAST 1/4 CORNER MONUMENT
S1/4 & N1/4 WEBER COUNTY
ESTABLISHED BY GREAT BASIN ENG. IN 1971

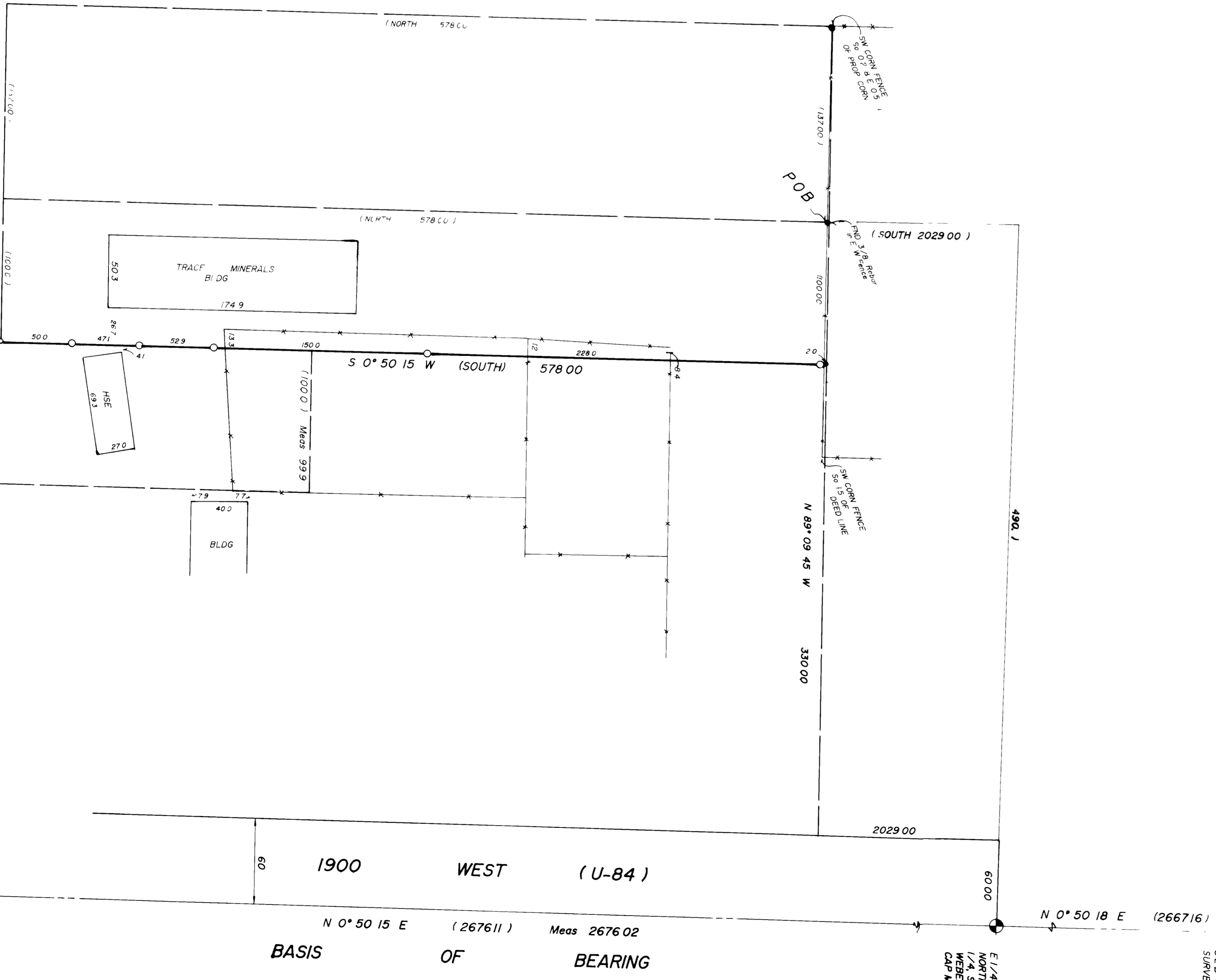
LEGEND

- S1/4 & N1/4 WEBER COUNTY
- DISTRICT BOUNDARY
- TOWNSHIP BOUNDARY
- RANGE BOUNDARY
- SECTION BOUNDARY
- MONUMENT
- BRASS CAP
- BRASS CAP WITH WITNESS MONUMENT



SURVEYOR'S CERTIFICATE
 I, CENTRAL L. ROBERTT DO HEREBY CERTIFY THAT I AM A REGISTERED LAND SURVEYOR
 AND THAT I HAVE MADE A SURVEY ON THE GROUND AND FROM RECORDS OF THE WEBER
 COUNTY RECORDS OFFICE AS DESCRIBED ABOVE AND SHOWN PER THIS PLAT
 DATE _____
 CENTRAL L. ROBERTT HAS 7211

1/4 Section
 S 89° 07' 24" W (263419)
 Meas 2634.09
 Meas 705.35
 Web Co. (705.52)
 Meas 303.35



NORTH-EAST CORNER OF SEC. 35
 TOWNSHIP 6 NORTH RANGE 2 WEST
 WEBER COUNTY BRASS CAP

S1/4 CORNER SEC. 35
 NORTHEAST CORNER OF SOUTHEAST
 1/4 SEC. 35, T. 6 N., R. 2 W.
 WEBER COUNTY SURVEYOR'S BRASS
 CAP MONUMENT

SE CORNER SEC. 35, T. 6 N., R. 2 W.
 MONUMENT BY WEBER COUNTY
 SURVEYOR (SEE DAK 1718)
 PAUL ROAD SWIK
 R.F.C.
 JUN 29 1994

TRACE MINERALS RESEARCH
 270 N. MAIN ST.
 SALT LAKE CITY, UT 84111
 S1/4 SEC. 35