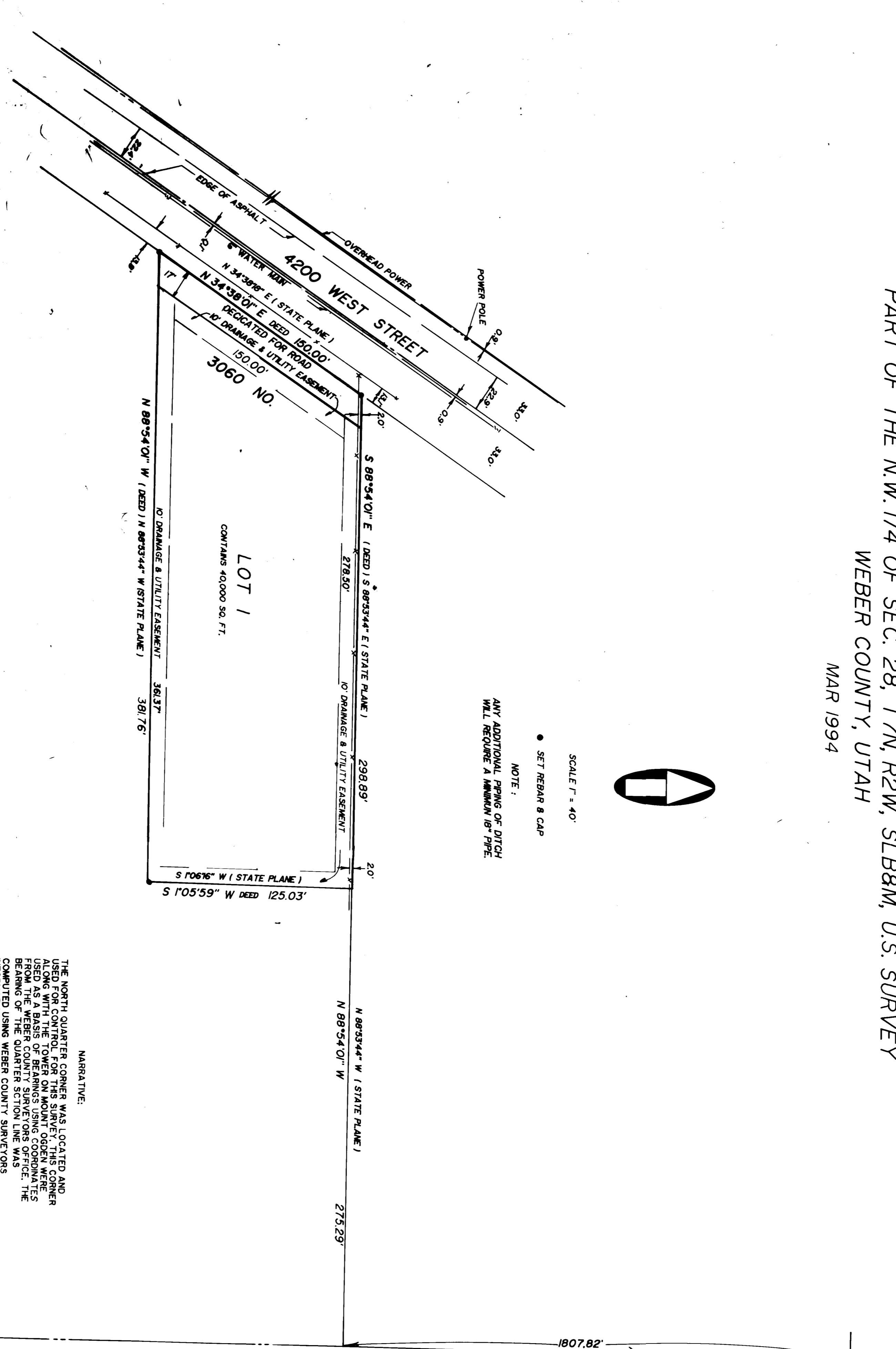
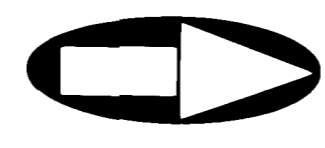


# BRICO SUBDIVISION

PART OF THE N.W. 1/4 OF SEC. 28, T7N, R2W, SLB8M, U.S. SURVEY  
WEBER COUNTY, UTAH  
MAR 1994



NOTE:  
SET REBAR & CAP  
ANY ADDITIONAL PAVING OR OTHER  
WILL REQUIRE A SEPARATE SET OF PLANS.



SCALE 1" = 40'

**NARRATIVE:**  
THE NORTH QUARTER CORNER WAS LOCATED AND USED FOR CONTROL FOR THIS SURVEY. THIS CORNER WAS RECONSTRUCTED BY THE SURVEYOR AND IS BEING USED AS A BASIS OF BEARINGS USING COMPASS BEARINGS. THE BEARINGS WERE OBTAINED FROM THE REMAINING WEBER COUNTY SURVEYORS OFFICE. THE BEARINGS WERE COMPUTED USING WEBER COUNTY SURVEYORS INFORMATION.  
**NOTE:** THE DEED BEARINGS WERE REVISED TO BEARINGS COMPUTED WITH STATE PLANE BEARINGS.

**CERTIFICATE OF SURVEY**  
I, BEING A REGISTERED LAND SURVEYOR IN THE STATE OF UTAH, DO HEREBY CERTIFY THAT THE ABOVE DESCRIBED BRICO SUBDIVISION IS A PART OF THE N.W. 1/4 OF SECTION 28, T7N, R2W, SLB8M, U.S. SURVEY, WEBER COUNTY, UTAH. THE BEARINGS AND DISTANCES WERE OBTAINED FROM THE REMAINING WEBER COUNTY SURVEYORS OFFICE. THE BEARINGS WERE COMPUTED USING WEBER COUNTY SURVEYORS INFORMATION. THE DEED BEARINGS WERE REVISED TO BEARINGS COMPUTED WITH STATE PLANE BEARINGS.  
SIGNED THIS 26th day of March, 1994  
Blaine B. Ramsey  
BLAINE B. RAMSEY  
LICENSE NO. 3835

**OWNERS DEDICATION**  
WE, THE UNDERSIGNED OWNERS OF THE HEREBY DESCRIBED TRACT OF LAND HEREBY SET APART AND SUBDIVIDE SAME INTO LOT AND STRIP HEREIN SHOWN ON THIS PLAT AND DEDICATE THE SAME TO THE PUBLIC AND TO THE PEOPLE OF THE STATE OF UTAH. THESE DEDICATIONS OF SAID TRACT OF LAND AND DISTRICTS ARE HEREBY MADE AND THE SAME TO BE USED AS PUBLIC HIGHWAYS, FOREST, AND BRIDGE LOTS TO WEBER COUNTY. THE BEARINGS AND DISTANCES WERE OBTAINED FROM THE REMAINING WEBER COUNTY SURVEYORS OFFICE. THE BEARINGS WERE COMPUTED USING WEBER COUNTY SURVEYORS INFORMATION. THE DEED BEARINGS WERE REVISED TO BEARINGS COMPUTED WITH STATE PLANE BEARINGS.  
SIGNED THIS 26th day of March, 1994  
Blaine B. Ramsey  
BLAINE B. RAMSEY  
LICENSE NO. 3835

**WEBER COUNTY PLANNING COMMISSION APPROVAL**  
RECEIVED BY THE PLANNING COMMISSION OF WEBER COUNTY ON THIS 19th day of March, 1994.  
SIGNATURE \_\_\_\_\_  
COUNTY CLERK'S OFFICE

**WEBER COUNTY ENGINEER**  
I HEREBY APPROVE THE REQUIRED IMPROVEMENT STANDARDS AND DRAWINGS FOR THIS SUBDIVISION AND THE AMOUNT OF FINANCIAL GUARANTEE FOR THESE IMPROVEMENTS.  
SIGNATURE \_\_\_\_\_  
TITLE \_\_\_\_\_

**WEBER COUNTY RECORDER**  
I HEREBY CERTIFY THAT THIS SUBDIVISION PLAT AND DRAWINGS WERE FILED FOR RECORD IN THE OFFICE OF THE COUNTY CLERK, WEBER COUNTY, UTAH, ON THIS 19th day of March, 1994.  
SIGNATURE \_\_\_\_\_  
TITLE \_\_\_\_\_

**COUNTY ATTORNEY**  
I HAVE EXAMINED THE ABOVE DESCRIBED SUBDIVISION PLAT AND DRAWINGS AND HAVE CONFORMED WITH THE PROVISIONS OF THE UTAH SUBDIVISION ACT.  
SIGNATURE \_\_\_\_\_  
TITLE \_\_\_\_\_

**WEBER COUNTY SURVEYOR**  
I HEREBY CERTIFY THAT I HAVE INVESTIGATED THE LINES OF SURVEY FOR THE ABOVE DESCRIBED SUBDIVISION AND HAVE FOUND THEM TO BE CORRECT AND TO AGREE WITH THE RECORDS ON RECORD IN THE OFFICE OF THE COUNTY CLERK, WEBER COUNTY, UTAH. I ALSO APPROVE THE REQUIRED IMPROVEMENT STANDARDS AND DRAWINGS FOR THESE IMPROVEMENTS.  
SIGNATURE \_\_\_\_\_  
TITLE \_\_\_\_\_

**WEBER COUNTY COMMISSION ACCEPTANCE**  
THIS IS TO CERTIFY THAT THIS SUBDIVISION PLAT AND DRAWINGS WERE FILED FOR RECORD IN THE OFFICE OF THE COUNTY CLERK, WEBER COUNTY, UTAH, ON THIS 19th day of March, 1994.  
SIGNATURE \_\_\_\_\_  
TITLE \_\_\_\_\_

**WEBER COUNTY RECORDER**  
I HEREBY CERTIFY THAT THIS SUBDIVISION PLAT AND DRAWINGS WERE FILED FOR RECORD IN THE OFFICE OF THE COUNTY CLERK, WEBER COUNTY, UTAH, ON THIS 19th day of March, 1994.  
SIGNATURE \_\_\_\_\_  
TITLE \_\_\_\_\_

CONTAINS 42,532 SQ. FT.