

DRAWING NUMBER
001055

DRAWING NUMBER
001055

DRAWING NUMBER
001055

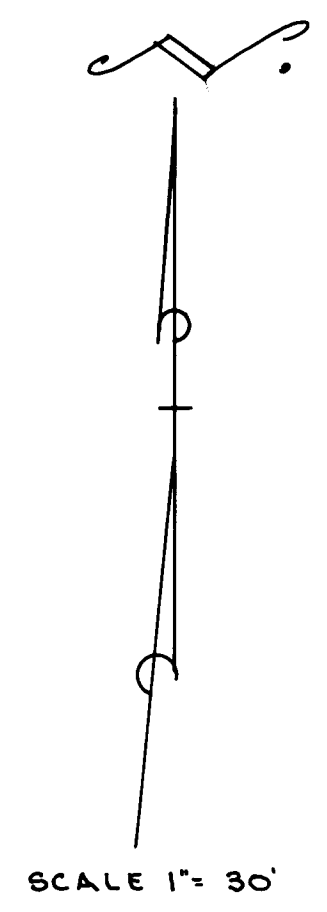
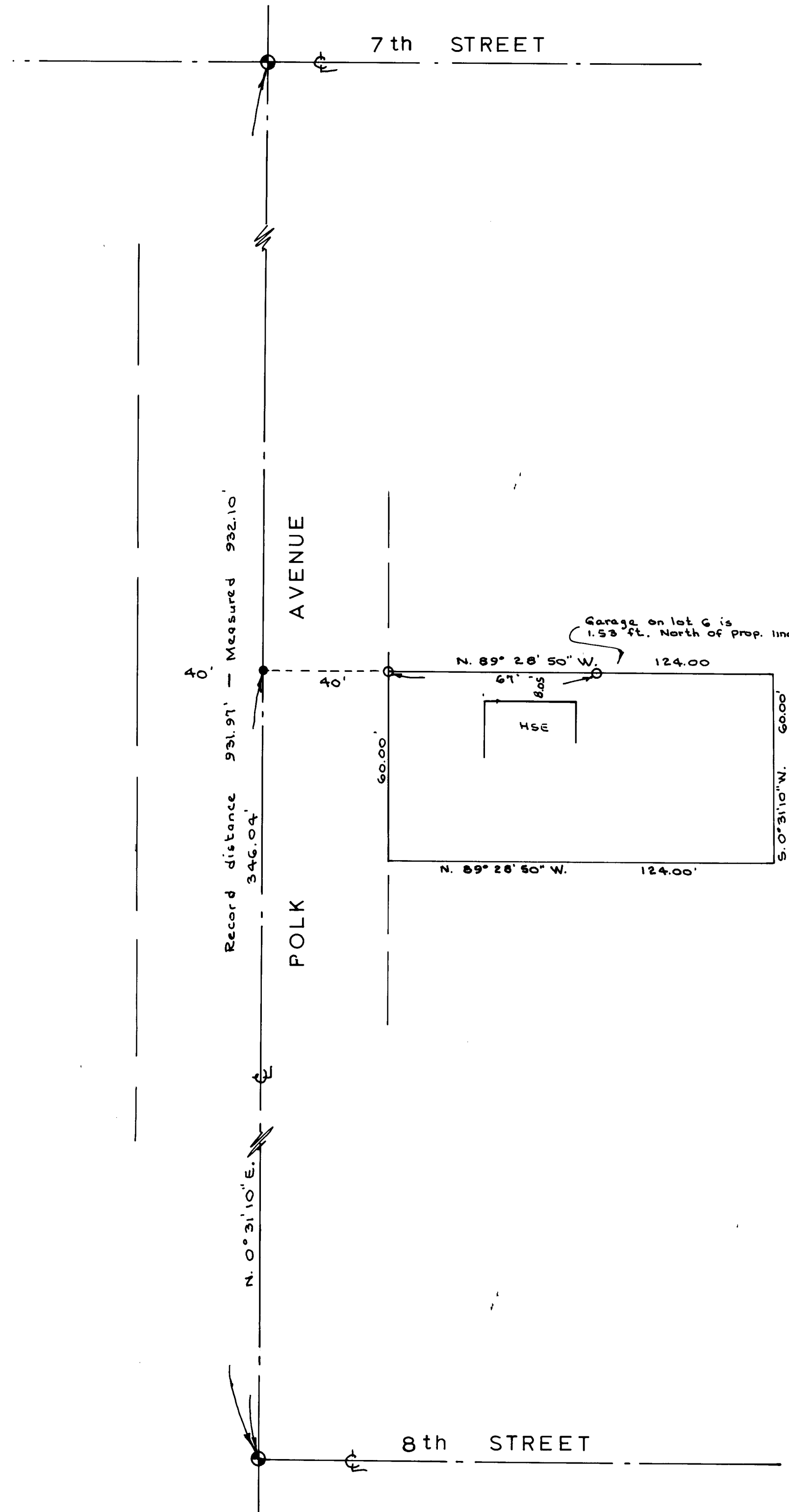
DRAWING NUMBER
001055

PLAN HOLD CORPORATION • IRVINE, CALIFORNIA
REORDER BY NUMBER 075AR
POSITION EDGE OF PRINT ON THIS LINE

PLAN HOLD CORPORATION • IRVINE, CALIFORNIA
REORDER BY NUMBER 075AR
POSITION EDGE OF PRINT ON THIS LINE

PLAN HOLD CORPORATION • IRVINE, CALIFORNIA
REORDER BY NUMBER 075AR
POSITION EDGE OF PRINT ON THIS LINE

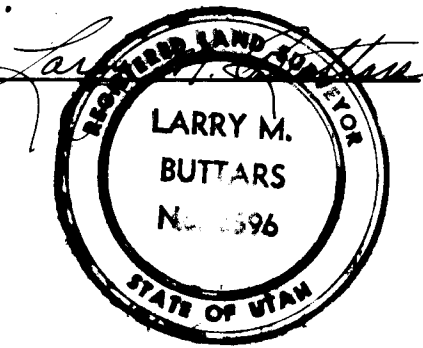
PLAN HOLD CORPORATION • IRVINE, CALIFORNIA
REORDER BY NUMBER 075AR
POSITION EDGE OF PRINT ON THIS LINE



SURVEYORS CERTIFICATE

I, Larry M. Butters, a registered Land Surveyor as prescribed by the laws of the State of Utah, and holding licence No. 2596 do hereby certify that I made a survey of the below described property and the Plat hereon is a true and correct representation of said survey.

Date 6-16-94 Sign *[Signature]*



DESCRIPTION

All of Lot 5, BLOCK 2, Simoron Park Addition to Ogden City, Weber County, Utah, according to the official plat thereof.

NARRATIVE

The purpose of this Survey was to establish the North line of property to prevent further encroachment by the owner of Lot 6.
Basis of Bearings - Platted bearings and Ogden City Monumentation used.

LEGEND

- Set 3/8" x 24" re-bar with plastic cap stamped L. Butters R.L.S. 2596
- Set P.K. nail with ribbon

RECEIVED
AUG 31 1994
Weber County Surveyor

BUTTERS SURVEYING
1815 26th STREET OGDEN, UT 84401
PHONE 332-5271

CLIENT: DELTON MORGAN

SURVEY LOCATION:
S.W. 1/4 SEC. 15, T.6N, R.1W. S.L.B.#M
SIMORON PARK ADD'N. TO OGDEN CITY

SURVEY DATE: 6-10-94 thru 6-15-94