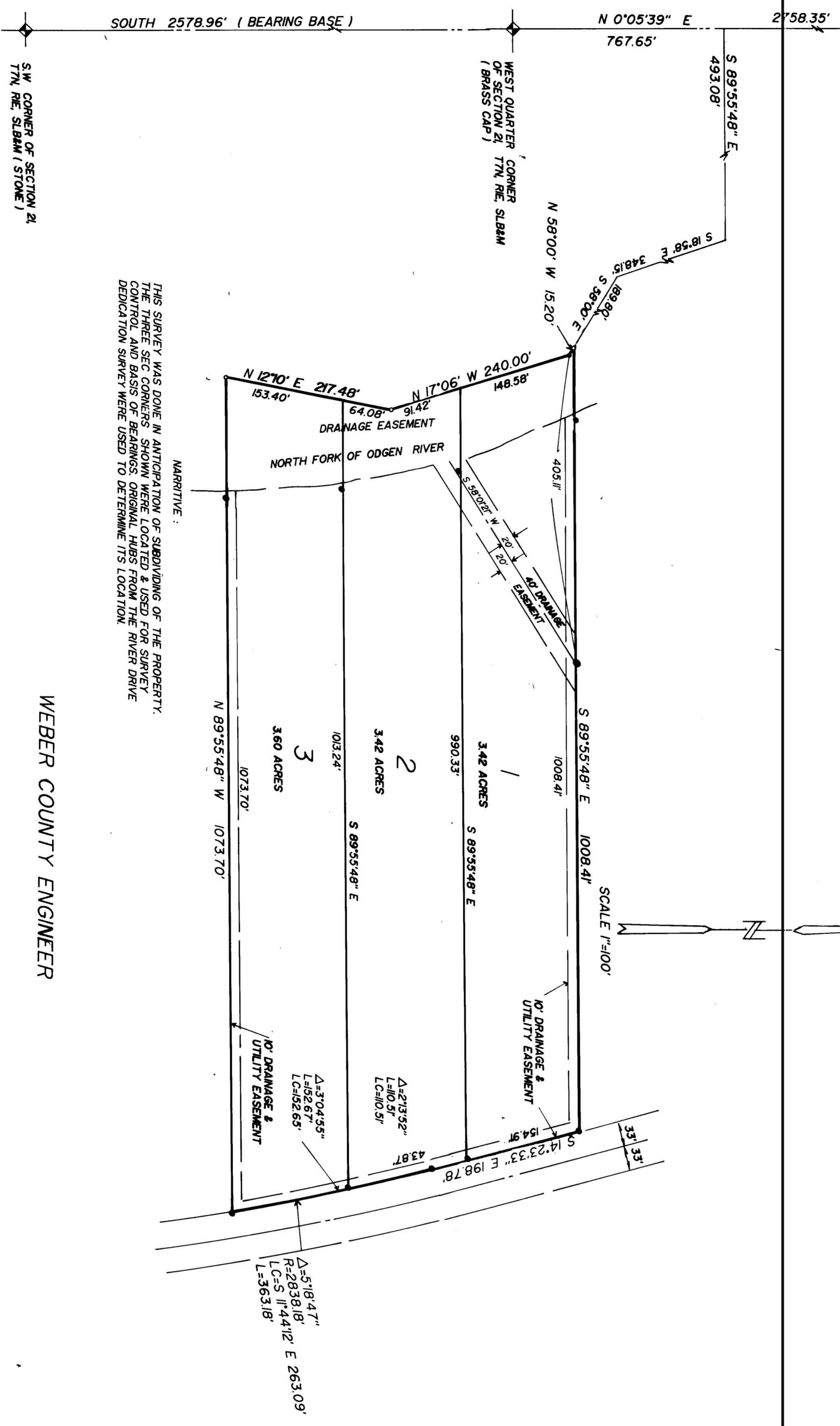


N.W. CORNER OF SECTION 21  
(STONE SLAB)

# RIVER VALLEY DRIVE ESTATES

A PART OF THE WEST 1/2 OF SECTION 21, T7N, R1E, S1B&M U.S. SURVEY  
WEBER COUNTY, UTAH  
NOV 1993



NOTE: THIS SURVEY WAS MADE IN ANTICIPATION OF SUBDIVISION OF THE PROPERTY. THE THREE SEC. CORNERS SHOWN WERE LOCATED BY THE SURVEYOR AND THE LOCATION OF THE CORNERS WAS DETERMINED BY THE SURVEYOR'S RECONSTRUCTION OF THE ORIGINAL SURVEY FROM THE RIVER DRIVE DEDICATION SURVEY WERE USED TO DETERMINE THIS LOCATION.

WEBER COUNTY ENGINEER

COUNTY SURVEYOR

COUNTY APPROVAL

PLANNING COMMISSION

COUNTY ATTORNEY

I hereby certify that I have carefully inspected the lines of the land embraced therein and find them to be correct and to agree with the lines and measurements as recited in this plat.

This is to certify that this plat and declaration of this plat were duly approved and accepted by the COUNTY COMMISSION of WEBER COUNTY Utah on this \_\_\_\_\_ day of \_\_\_\_\_ 1993.

Approved by the Planning Commission of WEBER COUNTY on this \_\_\_\_\_ day of \_\_\_\_\_ 1993.

APPROVED BY THE CITY ATTORNEY ON THIS \_\_\_\_\_ DAY OF \_\_\_\_\_ 1993.

COUNTY RECORDER

Reviewed this \_\_\_\_\_ day of \_\_\_\_\_ 1993, at \_\_\_\_\_ in \_\_\_\_\_ County, Utah.

Signature \_\_\_\_\_

Signature \_\_\_\_\_

Signature \_\_\_\_\_

Signature \_\_\_\_\_

Signature \_\_\_\_\_

### OWNERS DEDICATION

I, SLENN PALMERBORG, a Registered Land Surveyor in the State of Utah, do hereby certify that this plat of RIVER VALLEY DRIVE ESTATES, a part of the West 1/2 of Section 21, T7N, R1E, S1B&M U.S. Survey, Weber County, Utah, is a true and correct representation of the actual subdivision of the land as shown on the plat and as shown on the ground. I have personally inspected the lines and measurements shown on the plat and as shown on the ground and find them to be correct and to agree with the lines and measurements as recited in this plat. I have also inspected the plat and as shown on the ground and find them to be correct and to agree with the lines and measurements as recited in this plat. I have also inspected the plat and as shown on the ground and find them to be correct and to agree with the lines and measurements as recited in this plat.

### ACKNOWLEDGEMENT

I, \_\_\_\_\_, do hereby acknowledge that I have read the foregoing plat and that I have voluntarily and for the purposes herein mentioned, signed and acknowledged to me this said Declaration executed the \_\_\_\_\_ day of \_\_\_\_\_ 1993, at \_\_\_\_\_ in \_\_\_\_\_ County, Utah.

### BOUNDARY DESCRIPTION

A PART OF THE WEST HALF OF SECTION 21, T7N, R1E, S1B&M U.S. SURVEY BEGINNING AT A POINT WHICH IS NORTH 0°05'39" EAST 767.65' FT. ALONG THE WEST LINE OF SECTION 21 TO THE WEST QUARTER CORNER OF SAID SECTION 21 AND SOUTH 59°00' WEST 1520' FT. FROM THE WEST QUARTER CORNER OF SAID SECTION 21 AND RUNNING THENCE SOUTH 89°55'48" EAST 1008.41' FT. TO THE LINE AS FOLLOWS: SOUTH 14°33'59" EAST 189.79' FT. AND SOUTHERLY ALONG THE ARC OF A 2838.9' RADIUS CURVE TO THE NORTH 82°31' WEST 102.55' FT. TO THE CENTER OF THE NORTH FORK OF THE OGDEN RIVER, THENCE THREE (3) COURSES ALONG SAID CENTER OF THE OGDEN RIVER, THENCE THREE (3) COURSES ALONG SAID CENTER OF THE OGDEN RIVER, THENCE WEST 1°20' TO THE POINT OF BEGINNING.