

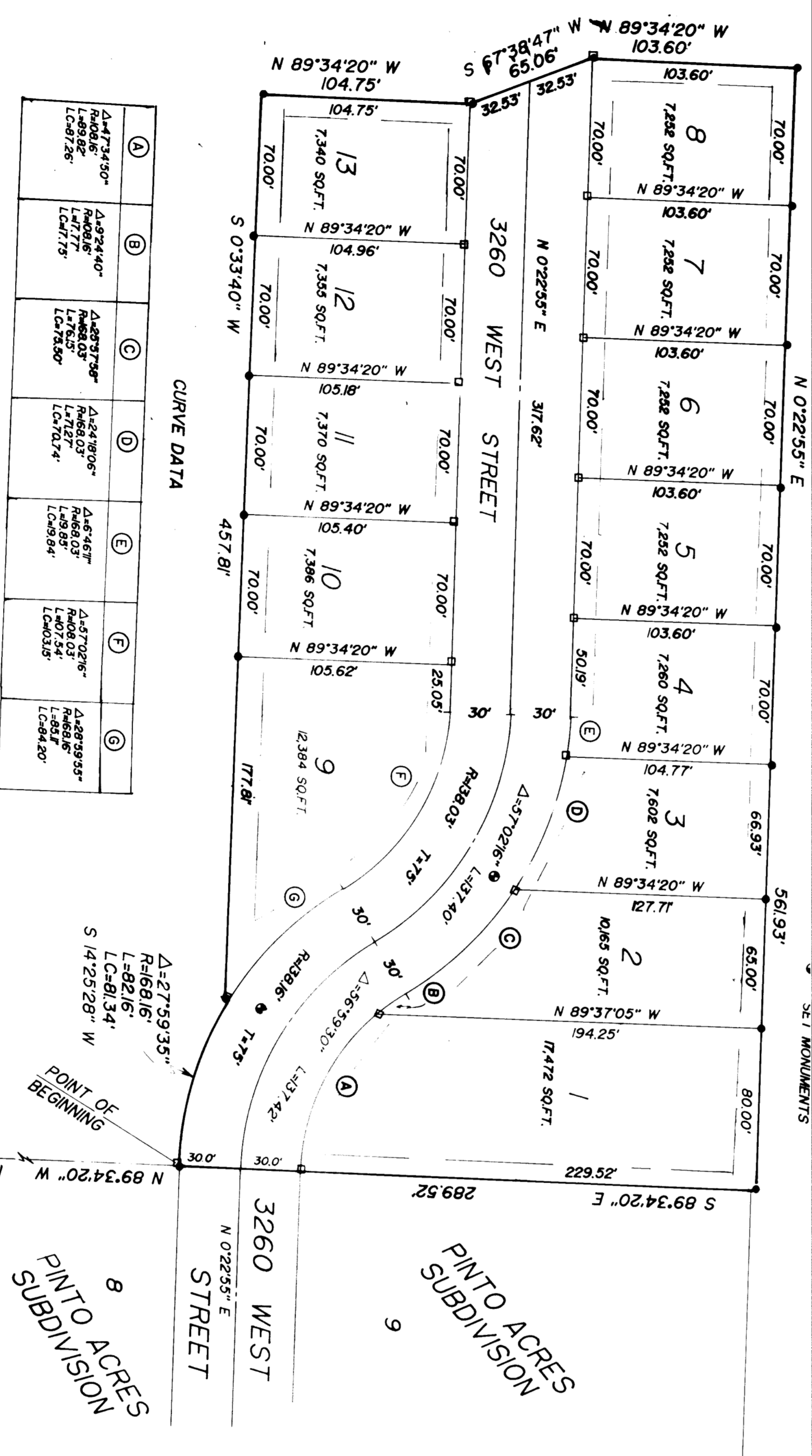
DAY DREAM MEADOWS PHASE I

A PART OF THE N.W. 1/4 OF SECTION 22, T5N, R2W, SLB&M U.S. SURVEY
ROY CITY, WEBER COUNTY, UTAH



SCALE 1"=50'

○ GRASS & UTILITY EASEMENT, EACH
SIDE OF LOT LINES AS INDICATED BY DASHED LINES
□ SET BACK & TACK
● SET MARK & TACK



OWNERS DEDICATION

WE, the undersigned owners of the above described property, do hereby dedicate to the City of Roy, Utah, the easements and rights shown on this plan for the use of the City of Roy, Utah, for the purpose of providing for the utility and drainage of the property shown on this plan. This dedication is made for the use and benefit of the City of Roy, Utah, and shall remain in full force and effect until the City of Roy, Utah, shall determine that the same are no longer needed for the purposes intended.

Witness my hand and seal of my office, this 27th day of June, 1994.

3835
Roy, Utah

Debbie Johnston

SUPERVISORS CERTIFICATE

CLERK, BOARD OF SUPERVISORS

ROY CITY, UTAH

WE, the undersigned, the Board of Supervisors of the City of Roy, Utah, do hereby certify that the above described property is within the boundaries of the City of Roy, Utah, and that the same is being dedicated to the City of Roy, Utah, for the purpose of providing for the utility and drainage of the property shown on this plan. This dedication is made for the use and benefit of the City of Roy, Utah, and shall remain in full force and effect until the City of Roy, Utah, shall determine that the same are no longer needed for the purposes intended.

Witness my hand and seal of my office, this 27th day of June, 1994.

3835
Roy, Utah

Debbie Johnston

ACKNOWLEDGEMENT

I, the undersigned, do hereby acknowledge that I am the owner of the above described property and that I have executed this plan for the purpose of dedicating to the City of Roy, Utah, the easements and rights shown on this plan for the use of the City of Roy, Utah, for the purpose of providing for the utility and drainage of the property shown on this plan. This dedication is made for the use and benefit of the City of Roy, Utah, and shall remain in full force and effect until the City of Roy, Utah, shall determine that the same are no longer needed for the purposes intended.

Witness my hand and seal of my office, this 27th day of June, 1994.

3835
Roy, Utah

Debbie Johnston

BOUNDARY DESCRIPTION

A PART OF THE NORTHWEST QUARTER OF SECTION 22, T5N, R2W, SLB&M U.S. SURVEY, BEGINNING AT THE SOUTHWEST CORNER OF LOT 13, WEST 1/2 SECTION 22, T5N, R2W, SLB&M U.S. SURVEY, AND NORTH 89°34'20" WEST 1360.57 FT. ALONG THE QUARTER SECTION LINE AND NORTH 89°34'20" WEST 1360.57 FT. ALONG THE QUARTER SECTION LINE TO THE POINT OF BEGINNING. THE QUARTER SECTION LINE BEARS NORTH 89°34'20" WEST 1360.57 FT. TO THE POINT OF BEGINNING. THE QUARTER SECTION LINE BEARS NORTH 89°34'20" WEST 1360.57 FT. TO THE POINT OF BEGINNING. THE QUARTER SECTION LINE BEARS NORTH 89°34'20" WEST 1360.57 FT. TO THE POINT OF BEGINNING.

COUNTY RECORDER

City of Roy, Utah, do hereby certify that this plan was filed for record and recorded in the office of the County Recorder on this 27th day of June, 1994.

County Recorder

CITY ATTORNEY

APPROVED BY THE CITY ATTORNEY ON THIS 27th DAY OF JUNE, 1994.

City Attorney

PLANNING COMMISSION

APPROVED BY THE PLANNING COMMISSION ON THIS 27th DAY OF JUNE, 1994.

City Planning Commission

CITY APPROVAL

This is to certify that this plan and dedication of the easements and rights shown on this plan were approved and accepted by the City of Roy, Utah, on this 27th day of June, 1994.

City of Roy, Utah

CITY ENGINEER

I hereby certify that I have carefully inspected the plan of subdivision and that it conforms to the requirements of the Utah Subdivision Act and that I have no objection to its recording in the office of the County Recorder.

City Engineer

INTERMOUNTAIN SURVEYING

Signature: _____
Title: _____
Date: _____

COUNTY RECORDER

City of Roy, Utah, do hereby certify that this plan was filed for record and recorded in the office of the County Recorder on this 27th day of June, 1994.

County Recorder

CITY ATTORNEY

APPROVED BY THE CITY ATTORNEY ON THIS 27th DAY OF JUNE, 1994.

City Attorney

PLANNING COMMISSION

APPROVED BY THE PLANNING COMMISSION ON THIS 27th DAY OF JUNE, 1994.

City Planning Commission

CITY APPROVAL

This is to certify that this plan and dedication of the easements and rights shown on this plan were approved and accepted by the City of Roy, Utah, on this 27th day of June, 1994.

City of Roy, Utah

CITY ENGINEER

I hereby certify that I have carefully inspected the plan of subdivision and that it conforms to the requirements of the Utah Subdivision Act and that I have no objection to its recording in the office of the County Recorder.

City Engineer

INTERMOUNTAIN SURVEYING

Signature: _____
Title: _____
Date: _____