

DRAWING NUMBER

001119

PLAN HOLD CORPORATION • IRVINE, CALIFORNIA
REORDER BY NUMBER 075AR
POSITION EDGE OF PRINT ON THIS LINE

DRAWING NUMBER

001119

PLAN HOLD CORPORATION • IRVINE, CALIFORNIA
REORDER BY NUMBER 075AR
POSITION EDGE OF PRINT ON THIS LINE

DRAWING NUMBER

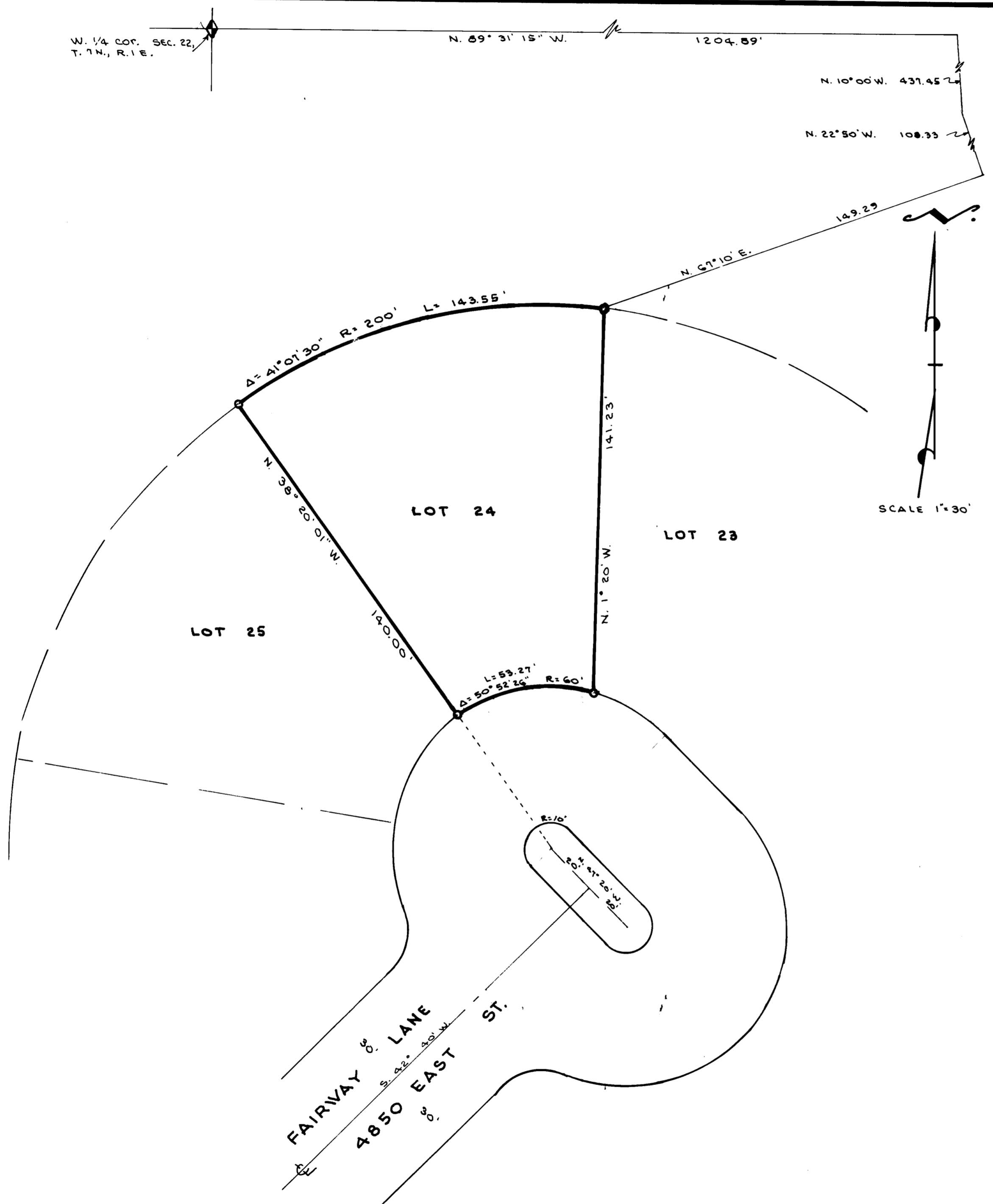
001119

PLAN HOLD CORPORATION • IRVINE, CALIFORNIA
REORDER BY NUMBER 075AR
POSITION EDGE OF PRINT ON THIS LINE

DRAWING NUMBER

001119

PLAN HOLD CORPORATION • IRVINE, CALIFORNIA
REORDER BY NUMBER 075AR
POSITION EDGE OF PRINT ON THIS LINE



SURVEYORS CERTIFICATE

I, Larry M. Buttars, a registered Land Surveyor as prescribed by the laws of the State of Utah, and holding licence No. 2596, do hereby certify that I made a survey of the below described property and the Plat hereon is a true and correct representation of said survey.

Date: 7-21-94 Sign: *Larry M. Buttars*



DESCRIPTION

Lot 24, Patio Springs Unit No. 1, a Cluster Type Subdivision in Weber County, State of Utah, according to the official plat thereof.

NARRATIVE

The purpose of this Survey was to re-establish Lot corners for constructing a home. Existing corners found in the Subdivision were used for survey control and bearing base.

LEGEND

- Set 5/8" x 24" re-bar with plastic cap stamped L. Buttars R.L.S. 2596
- Set P.K. nail with ribbon

RECEIVED

JAN 25 1994

W. M. [Signature]

BUTTARS SURVEYING	
1815 26TH STREET OGDEN, UT 84401	
PHONE 332-5271	
CLIENT: BART SMITH	
SURVEY LOCATION:	
S.W. 1/4 SEC. 22, T. 7N., R. 1E. S.L.B.M.	
WEBER COUNTY UT.	
SURVEY DATE: 7-18-94	

001119