

DRAWING NUMBER
001194

PLAN HOLD CORPORATION • IRVINE, CALIFORNIA
REORDER BY NUMBER 075AR
POSITION EDGE OF PRINT ON THIS LINE

DRAWING NUMBER
001194

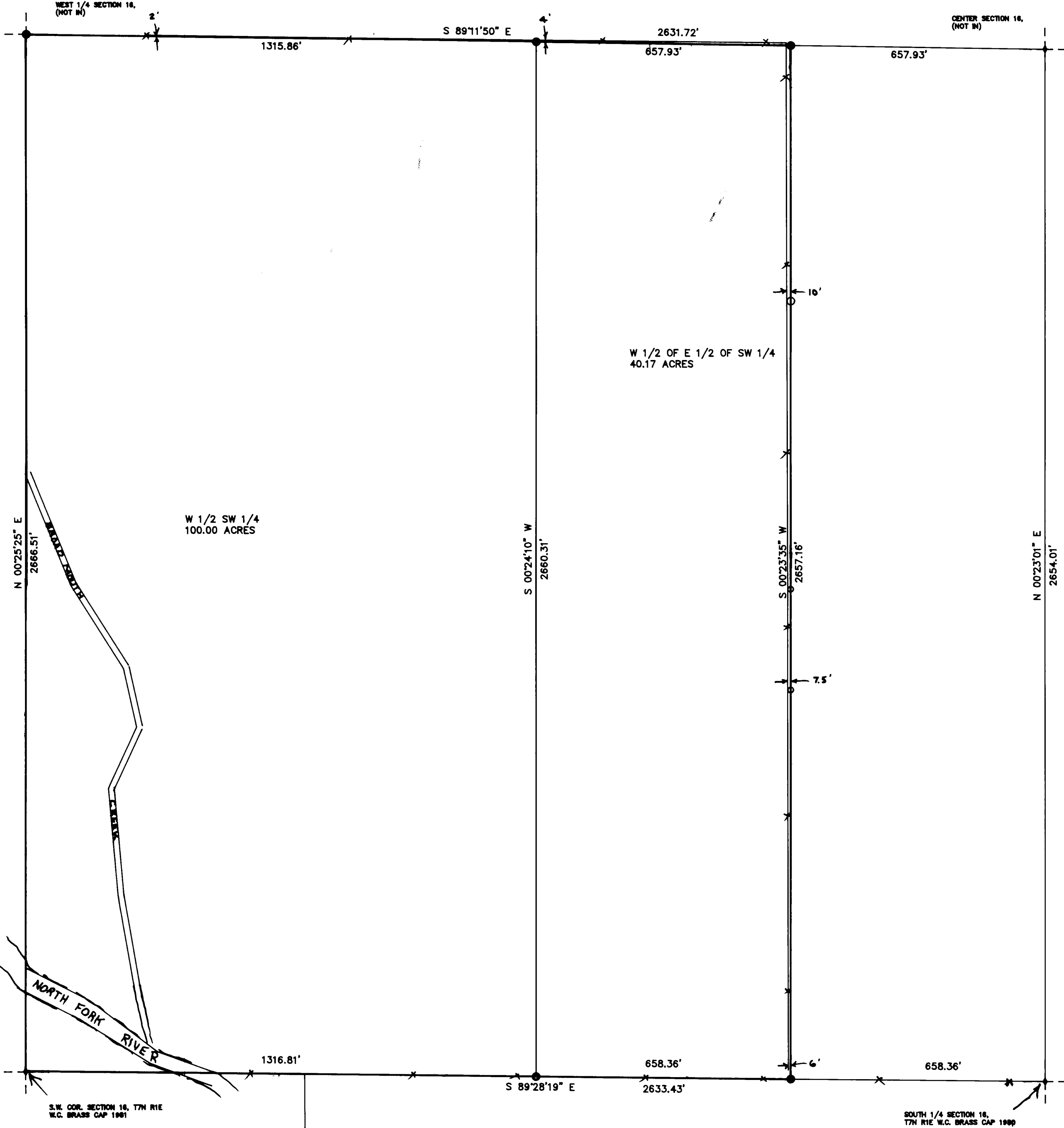
PLAN HOLD CORPORATION • IRVINE, CALIFORNIA
REORDER BY NUMBER 075AR
POSITION EDGE OF PRINT ON THIS LINE

DRAWING NUMBER
001194

PLAN HOLD CORPORATION • IRVINE, CALIFORNIA
REORDER BY NUMBER 075AR
POSITION EDGE OF PRINT ON THIS LINE

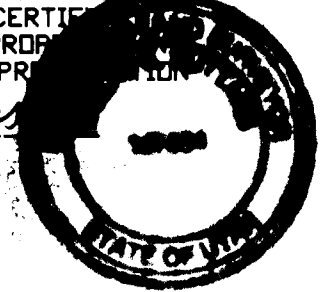
DRAWING NUMBER
001194

PLAN HOLD CORPORATION • IRVINE, CALIFORNIA
REORDER BY NUMBER 075AR
POSITION EDGE OF PRINT ON THIS LINE



SURVEYORS CERTIFICATE

I, DALLAS K. BUTTARS, A REGISTERED LAND SURVEYOR AS PRESCRIBED BY THE LAWS OF THE STATE OF UTAH AND HOLDING LICENSE NUMBER 167594, DO HEREBY CERTIFY I MADE A SURVEY OF THE BELOW DESCRIBED PROPERTY. THE PLAT HEREON IS A TRUE AND CORRECT REPRESENTATION OF SAID SURVEY.
DATE: Apr. 13, 1995 SIGNED: Dallas K. Buttars



DESCRIPTION

SECTION 16, TOWNSHIP 7 NORTH, RANGE 1 EAST, SALT LAKE BASE AND MERIDIAN; THE WEST ONE HALF OF THE EAST ONE HALF OF THE SOUTHWEST QUARTER OF SAID SECTION 16, AND THE WEST ONE HALF OF THE SOUTHWEST QUARTER OF SAID SECTION 16. CONTAINS 120.65 ACRES

NARRATIVE

THE PURPOSE OF THIS SURVEY WAS TO ESTABLISH THE BOUNDARY FOR A SALE OF THIS PROPERTY. STATE PLANE GRID BEARINGS USED.

SCALE: 1" = 200'
○ = REBAR & CAP SET
-x-x- = FENCE

RECEIVED

JUN 29 1995

Webb County Clerk

CLIENT: TOM HAYES
LOCATION: S.W. 1/4 SEC. 16, T.7 N., R.1 E. SLB&M
WEBER COUNTY, UTAH
SURVEYED: APRIL 13, 1995

LANDMARK SURVEYING

A COMPLETE SURVEYING SERVICE

2485 GRANT AVE. SUITE 318-B OGDEN, UTAH 84401
PH 627-4014 392-5291



001194