

DRAWING NUMBER
001196

PLAN HOLD CORPORATION • IRVINE, CALIFORNIA
REORDER BY NUMBER 075AR

DRAWING NUMBER
001196

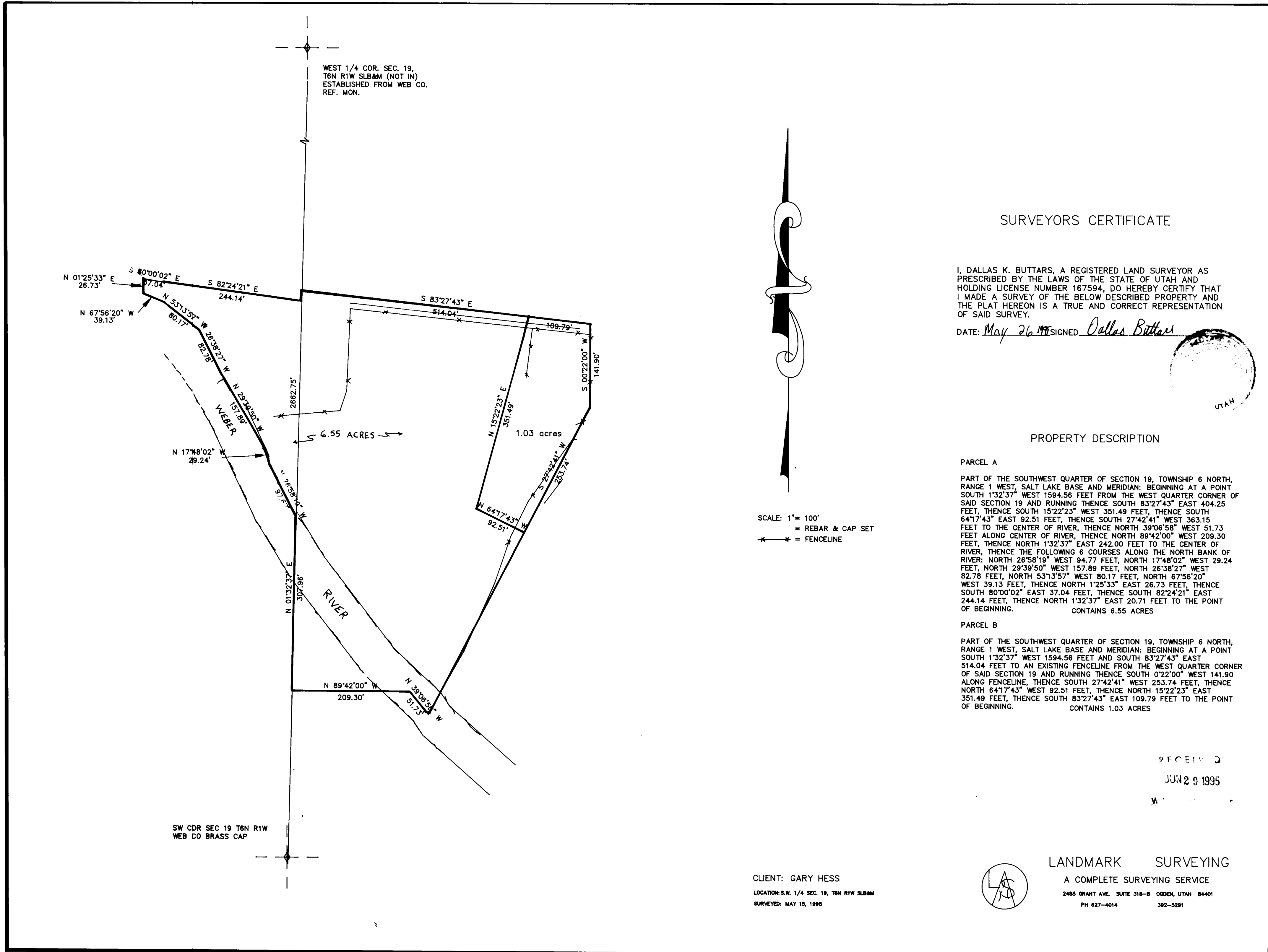
PLAN HOLD CORPORATION • IRVINE, CALIFORNIA
REORDER BY NUMBER 075AR

DRAWING NUMBER
001196

PLAN HOLD CORPORATION • IRVINE, CALIFORNIA
REORDER BY NUMBER 075AR

DRAWING NUMBER
001196

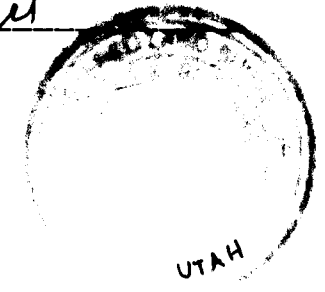
PLAN HOLD CORPORATION • IRVINE, CALIFORNIA
REORDER BY NUMBER 075AR



SURVEYORS CERTIFICATE

I, DALLAS K. BUTTARS, A REGISTERED LAND SURVEYOR AS
PRESCRIBED BY THE LAWS OF THE STATE OF UTAH AND
HOLDING LICENSE NUMBER 167594, DO HEREBY CERTIFY THAT
I MADE A SURVEY OF THE BELOW DESCRIBED PROPERTY AND
THE PLAT HEREON IS A TRUE AND CORRECT REPRESENTATION
OF SAID SURVEY.

DATE: May 26 1995 SIGNED: Dallas Buttars



PROPERTY DESCRIPTION

PARCEL A
PART OF THE SOUTHWEST QUARTER OF SECTION 19, TOWNSHIP 6 NORTH,
RANGE 1 WEST, SALT LAKE BASE AND MERIDIAN; BEGINNING AT A POINT
SOUTH 1°32'37" WEST 1594.56 FEET FROM THE WEST QUARTER CORNER OF
SAID SECTION 19 AND RUNNING THENCE SOUTH 83°27'43" EAST 404.25
FEET, THENCE SOUTH 15°22'23" WEST 351.49 FEET, THENCE SOUTH
64°17'43" EAST 92.51 FEET, THENCE SOUTH 27°42'41" WEST 363.15
FEET TO THE CENTER OF RIVER, THENCE NORTH 39°06'58" WEST 51.73
FEET ALONG CENTER OF RIVER, THENCE NORTH 89°42'00" WEST 209.30
FEET, THENCE NORTH 1°32'37" EAST 242.00 FEET TO THE CENTER OF
RIVER, THENCE THE FOLLOWING 6 COURSES ALONG THE NORTH BANK OF
RIVER: NORTH 26°58'19" WEST 94.77 FEET, NORTH 17°48'02" WEST 29.24
FEET, NORTH 29°39'50" WEST 157.89 FEET, NORTH 26°38'27" WEST
82.78 FEET, NORTH 53°13'57" WEST 80.17 FEET, NORTH 67°56'20"
WEST 39.13 FEET, THENCE NORTH 1°25'33" EAST 26.73 FEET, THENCE
SOUTH 80°00'02" EAST 37.04 FEET, THENCE SOUTH 82°24'21" EAST
244.14 FEET, THENCE NORTH 1°32'37" EAST 20.71 FEET TO THE POINT
OF BEGINNING.
CONTAINS 6.55 ACRES

PARCEL B
PART OF THE SOUTHWEST QUARTER OF SECTION 19, TOWNSHIP 6 NORTH,
RANGE 1 WEST, SALT LAKE BASE AND MERIDIAN; BEGINNING AT A POINT
SOUTH 1°32'37" WEST 1594.56 FEET AND SOUTH 83°27'43" EAST
514.04 FEET TO AN EXISTING FENCELINE FROM THE WEST QUARTER CORNER
OF SAID SECTION 19 AND RUNNING THENCE SOUTH 0°22'00" WEST 141.90
ALONG FENCELINE, THENCE SOUTH 27°42'41" WEST 253.74 FEET, THENCE
NORTH 64°17'43" WEST 92.51 FEET, THENCE NORTH 15°22'23" EAST
351.49 FEET, THENCE SOUTH 83°27'43" EAST 109.79 FEET TO THE POINT
OF BEGINNING.
CONTAINS 1.03 ACRES

001196