

DRAWING NUMBER

001198

PLAN HOLD CORPORATION • IRVINE, CALIFORNIA

REORDER BY NUMBER 075AR

REORDER BY NUMBER 075AR

DRAWING NUMBER

001198

PLAN HOLD CORPORATION • IRVINE, CALIFORNIA

REORDER BY NUMBER 075AR

REORDER BY NUMBER 075AR

DRAWING NUMBER

001198

PLAN HOLD CORPORATION • IRVINE, CALIFORNIA

REORDER BY NUMBER 075AR

REORDER BY NUMBER 075AR

DRAWING NUMBER

001198

PLAN HOLD CORPORATION • IRVINE, CALIFORNIA

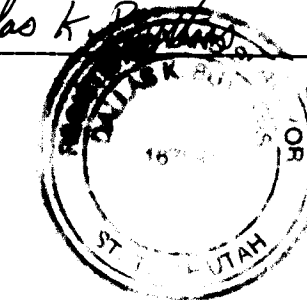
REORDER BY NUMBER 075AR

REORDER BY NUMBER 075AR

### SURVEYORS CERTIFICATE

I, DALLAS K. BUTTARS, A REGISTERED LAND SURVEYOR AS PRESCRIBED BY THE LAWS OF THE STATE OF UTAH AND HOLDING LICENSE NUMBER 1571594, DO HEREBY CERTIFY THAT I MADE A SURVEY OF THE BELOW DESCRIBED PROPERTY AND THE PLAT HEREON IS A TRUE AND CORRECT REPRESENTATION OF SAID SURVEY.

DATE: Mar. 21, 1995 SIGNED: Dallas K. Buttars

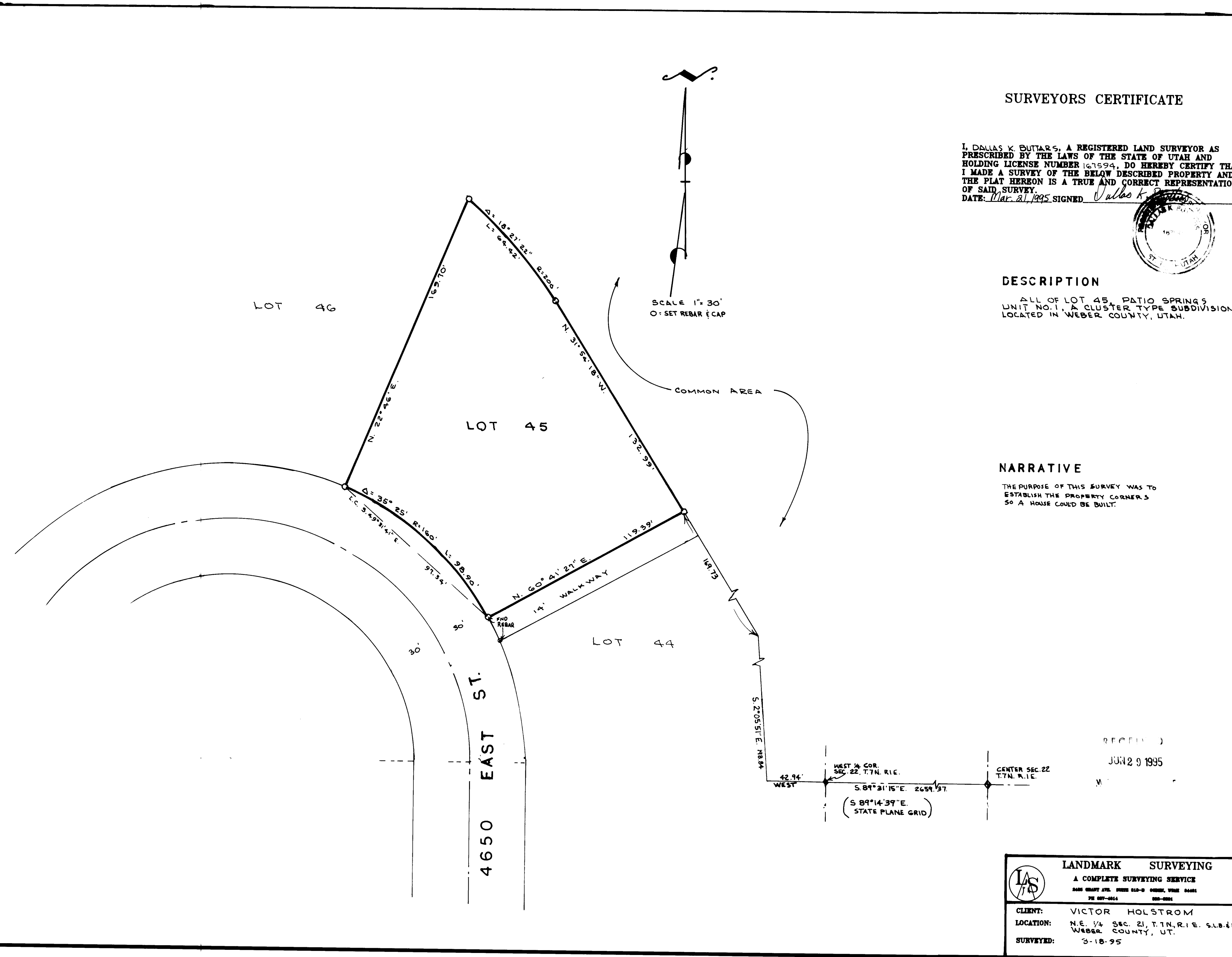


### DESCRIPTION

ALL OF LOT 45, PATIO SPRINGS UNIT NO. 1, A CLUSTER TYPE SUBDIVISION LOCATED IN WEBER COUNTY, UTAH.

### NARRATIVE

THE PURPOSE OF THIS SURVEY WAS TO ESTABLISH THE PROPERTY CORNERS SO A HOUSE COULD BE BUILT.



RECEIVED

JUN 29 1995

**LANDMARK SURVEYING**  
 A COMPLETE SURVEYING SERVICE  
 2400 GRANT AVE. SUITE 210-2 GERRY, UTAH 84001  
 PH 801-844-0001 FAX 801-844-0002

CLIENT: VICTOR HOLSTROM  
 LOCATION: N.E. 1/4 SEC. 21, T.7N. R.1E. S.U.B.D.M. WEBER COUNTY, UT.  
 SURVEYED: 3-18-95

001198