

DRAWING NUMBER

001229

PLAN HOLD CORPORATION • IRVINE, CALIFORNIA

REORDER BY NUMBER 075AR

POSITION EDGE OF PRINT ON THIS LINE

DRAWING NUMBER

001229

PLAN HOLD CORPORATION • IRVINE, CALIFORNIA

REORDER BY NUMBER 075AR

POSITION EDGE OF PRINT ON THIS LINE

DRAWING NUMBER

001229

PLAN HOLD CORPORATION • IRVINE, CALIFORNIA

REORDER BY NUMBER 075AR

POSITION EDGE OF PRINT ON THIS LINE

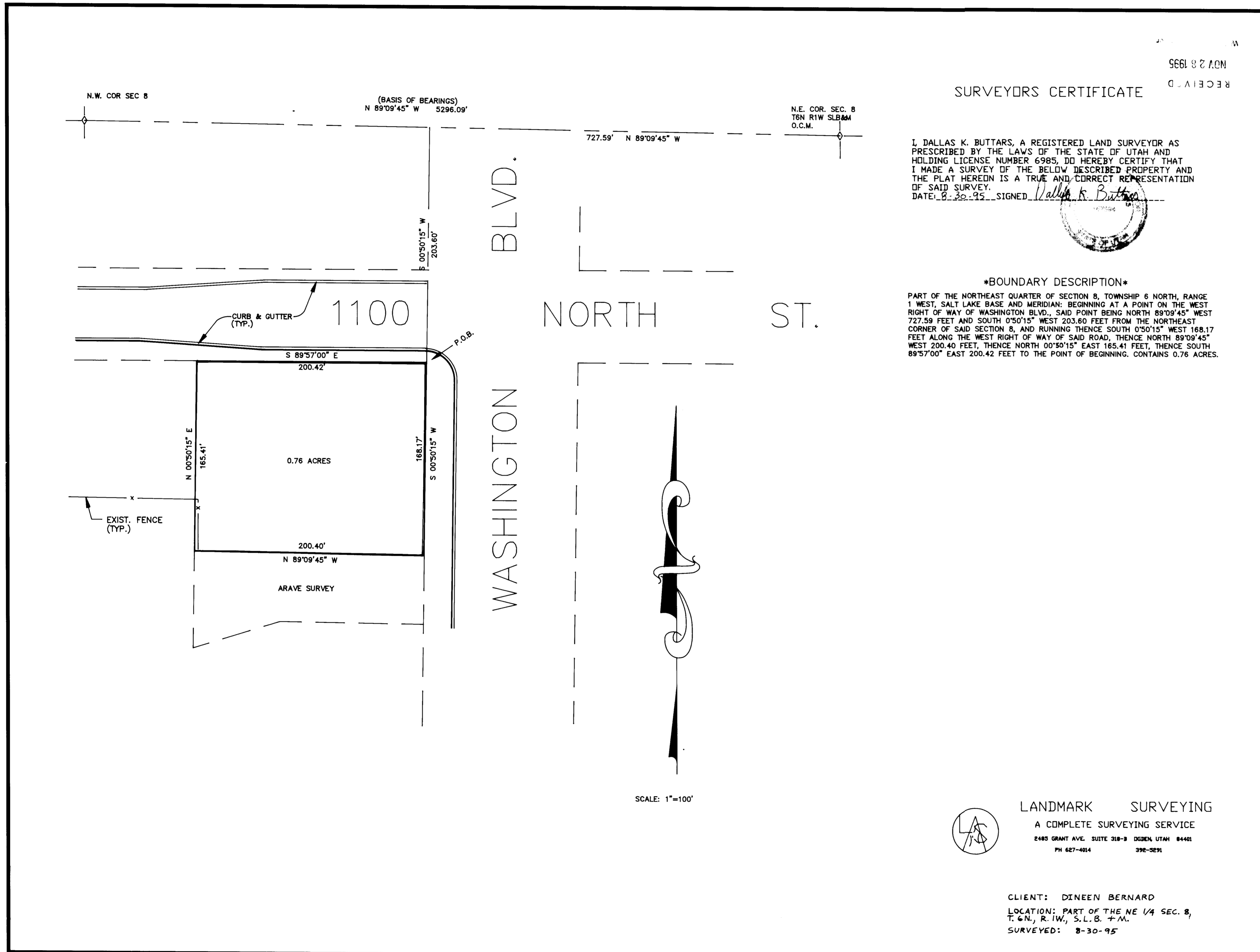
DRAWING NUMBER

001229

PLAN HOLD CORPORATION • IRVINE, CALIFORNIA

REORDER BY NUMBER 075AR

POSITION EDGE OF PRINT ON THIS LINE



SURVEYORS CERTIFICATE

I, DALLAS K. BUTTARS, A REGISTERED LAND SURVEYOR AS PRESCRIBED BY THE LAWS OF THE STATE OF UTAH AND HOLDING LICENSE NUMBER 6985, DO HEREBY CERTIFY THAT I MADE A SURVEY OF THE BELOW DESCRIBED PROPERTY AND THE PLAT HEREON IS A TRUE AND CORRECT REPRESENTATION OF SAID SURVEY.

DATE: 8-30-95 SIGNED: Dallas K. Buttars



\*BOUNDARY DESCRIPTION\*

PART OF THE NORTHEAST QUARTER OF SECTION 8, TOWNSHIP 6 NORTH, RANGE 1 WEST, SALT LAKE BASE AND MERIDIAN: BEGINNING AT A POINT ON THE WEST RIGHT OF WAY OF WASHINGTON BLVD., SAID POINT BEING NORTH 89°09'45\"/>

LANDMARK SURVEYING

A COMPLETE SURVEYING SERVICE

2485 GRANT AVE. SUITE 318-B DEDEN, UTAH 84401  
 PH 627-4014 392-2891



CLIENT: DINEEN BERNARD  
 LOCATION: PART OF THE NE 1/4 SEC. 8,  
 T. 6 N., R. 1 W., S. 1 B. 7 M.  
 SURVEYED: 8-30-95

NOV 28 1995

RECEIVED

SCALE: 1"=100'

001229