

DRAWING NUMBER

001231

PLAN HOLD CORPORATION • IRVINE, CALIFORNIA

REORDER BY NUMBER 075AP

DRAWING NUMBER

001231

PLAN HOLD CORPORATION • IRVINE, CALIFORNIA

REORDER BY NUMBER 075AP

DRAWING NUMBER

001231

PLAN HOLD CORPORATION • IRVINE, CALIFORNIA

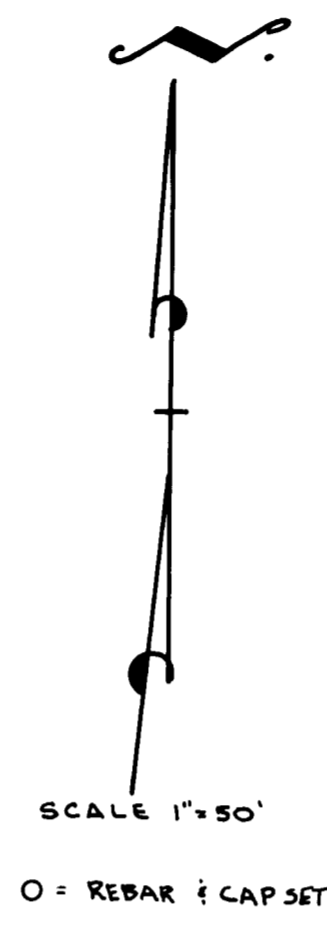
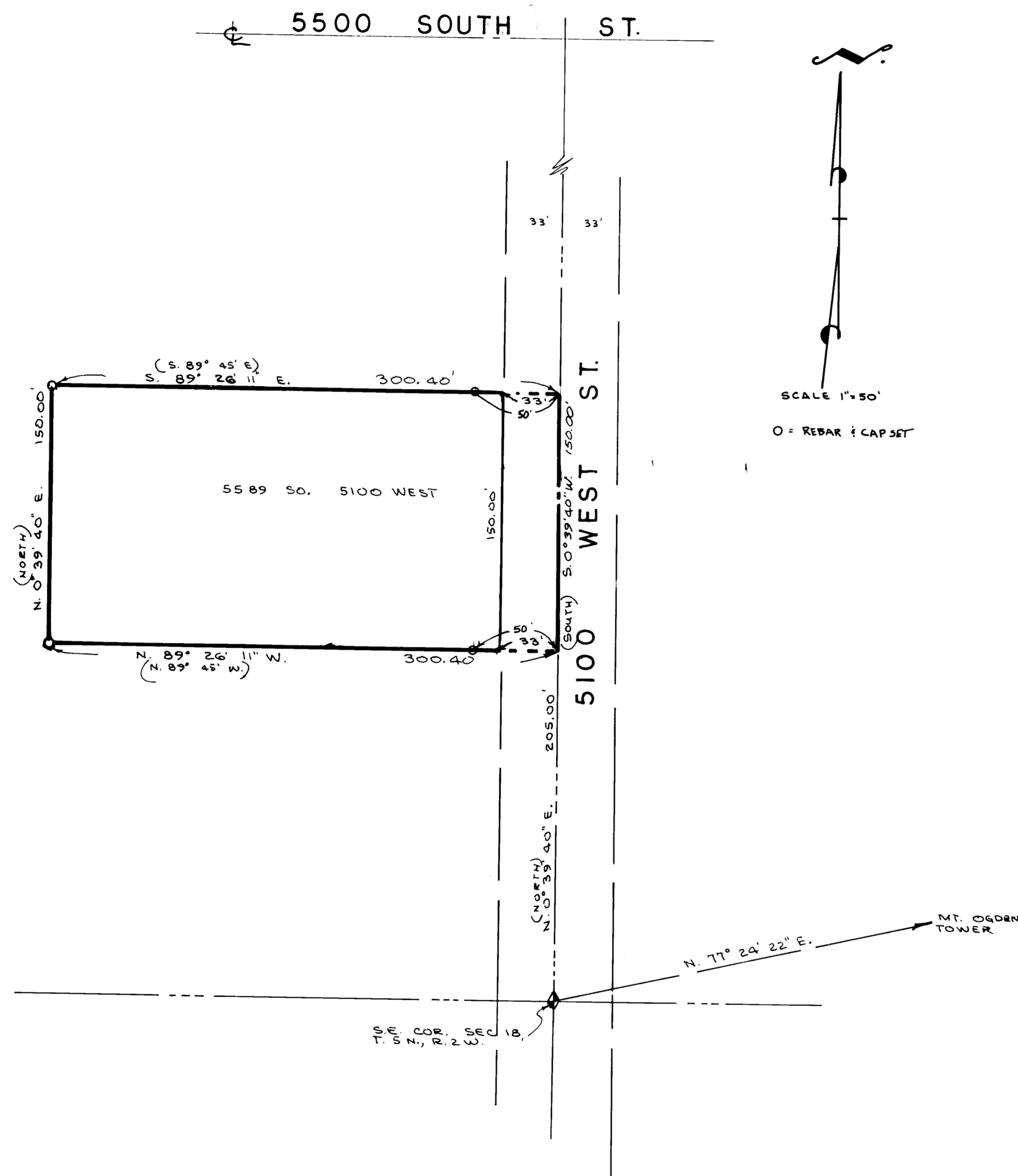
REORDER BY NUMBER 075AP

DRAWING NUMBER

001231

PLAN HOLD CORPORATION • IRVINE, CALIFORNIA

REORDER BY NUMBER 075AP



RECEIVED

NOV 28 1995

SURVEYORS CERTIFICATE

I, DALLAS K. BUTTAR, A REGISTERED LAND SURVEYOR AS PRESCRIBED BY THE LAWS OF THE STATE OF UTAH AND HOLDING LICENSE NUMBER 161594, DO HEREBY CERTIFY THAT I MADE A SURVEY OF THE BELOW DESCRIBED PROPERTY AND THE PLAT HEREON IS A TRUE AND CORRECT REPRESENTATION OF SAID SURVEY.

DATE: June 21, 1995 SIGNED: Dallas K. Buttar

NARRATIVE:

The purpose of this survey was to determine property lines.
 Basis of Bearings: East line of Section 18, N. 0° 39' 40" E. State plane grid. Bearings in parenthesis are bearings from title.

DESCRIPTION BEARINGS ROTATED

Part of the Southeast Quarter of Section 18, T. 5N., R. 2W., S. 1B. & M., U.S. Survey: Beginning at a point N. 0° 39' 40" E. along the section line 205.00 feet from the southeast corner of said Quarter Section and running thence N. 89° 26' 11" W. 300.40 ft., thence N. 0° 39' 40" E. 150.00 ft., thence S. 89° 26' 11" E. 300.40 ft. to East line of said Section 18, thence S. 0° 39' 40" W. 150.00 ft. to the point of beginning.
 contains 45,066 sq. ft. less Road

LANDMARK SURVEYING

A COMPLETE SURVEYING SERVICE

2486 GRANT AVE. SUITE 318 OGDEN, UTAH 84401
 PH 627-4014 382-5291

CLIENT: CURTIS Q. DAVIS
 LOCATION: S. E. 1/4 SEC. 18, T. 5N., R. 2W., S. 1B. & M.
 SURVEYED: 6-21-95

001231