

DRAWING NUMBER

001233

PLAN HOLD CORPORATION • IRVINE, CALIFORNIA

REORDER BY NUMBER 075AR

DRAWING NUMBER

001233

PLAN HOLD CORPORATION • IRVINE, CALIFORNIA

REORDER BY NUMBER 075AR

DRAWING NUMBER

001233

PLAN HOLD CORPORATION • IRVINE, CALIFORNIA

REORDER BY NUMBER 075AR

DRAWING NUMBER

001233

PLAN HOLD CORPORATION • IRVINE, CALIFORNIA

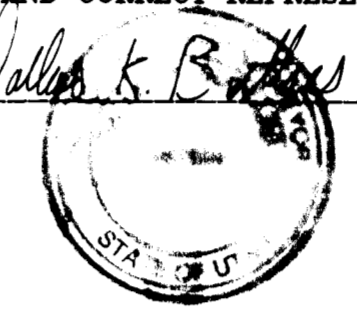
REORDER BY NUMBER 075AR

DATE: June 15, 1995

SURVEYORS CERTIFICATE

I, DALLAS K. BUTTARS, A REGISTERED LAND SURVEYOR AS PRESCRIBED BY THE LAWS OF THE STATE OF UTAH AND HOLDING LICENSE NUMBER 1594, DO HEREBY CERTIFY THAT I MADE A SURVEY OF THE BELOW DESCRIBED PROPERTY AND THE PLAT HEREON IS A TRUE AND CORRECT REPRESENTATION OF SAID SURVEY.

DATE: June 15, 1995 SIGNED *Dallas K. Buttars*

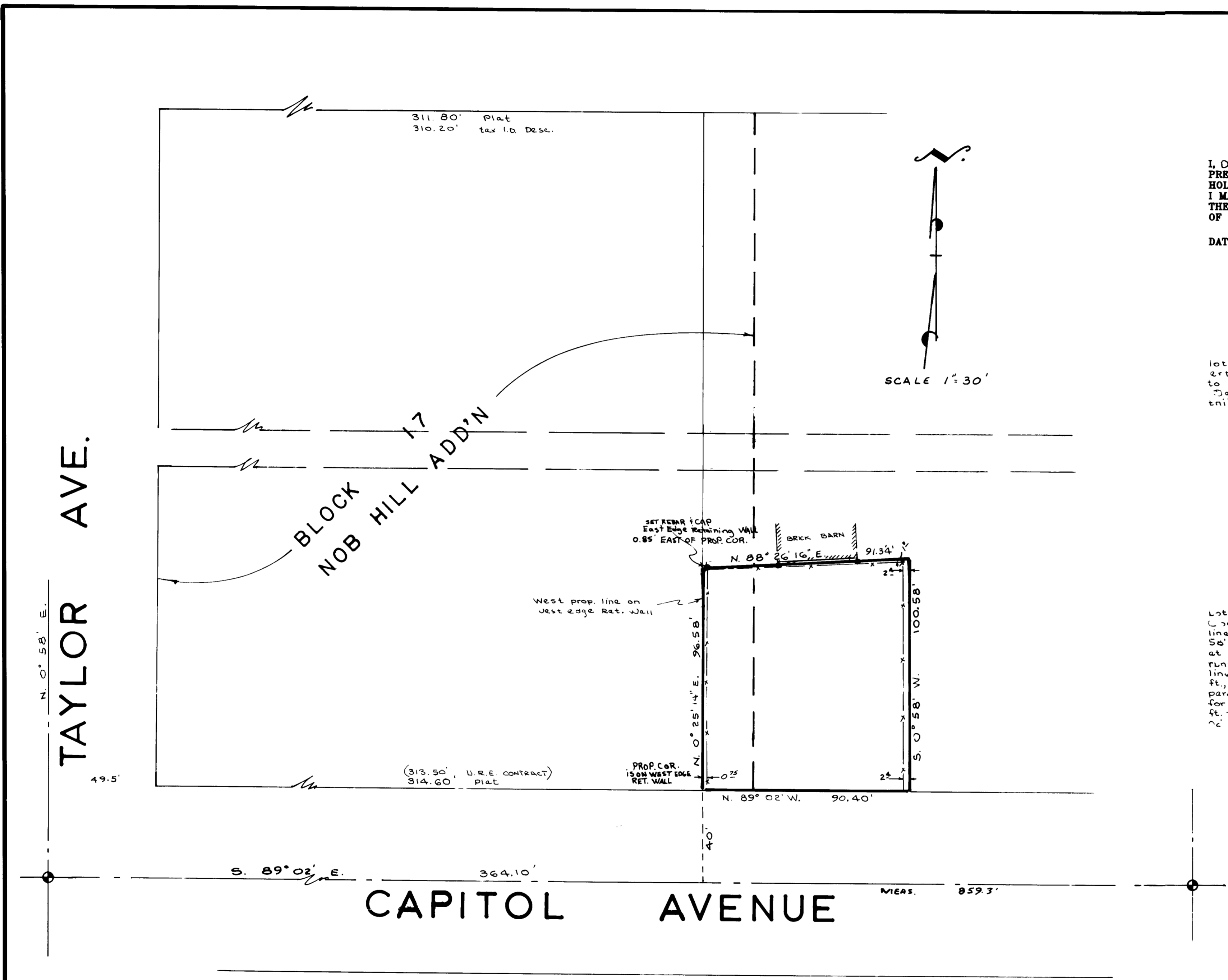


NARRATIVE:

The purpose of this Survey was to establish lot corners for adding improvements to the property, and to revise the property description to more clearly identify the property. Ogden City record bearings were used for this Survey.

DESCRIPTION

Part of Block 17, Nob Hill Addn, and part of Lot 1, Block 51, Nob Hill Annex, Ogden City, Weber County, Utah; Beginning at a point on the North line of Capitol Ave. S. 89° 02' E. 364.10' ft. and N. 70° 56' E. 40.0' ft. from the Ogden City Monument at the center of Capitol Ave. and Taylor Ave., and running thence N. 0° 25' 14" E. along the East line of lot 6, Block 17, Nob Hill Subdivision 76.50 ft., thence N. 88° 26' 16" E. 2 ft. south of and parallel to the South Wall of a large brick barn for a distance of 91.34 ft., thence S. 0° 58' W. 100.58 ft. to the North line of Capitol Ave., thence N. 89° 02' W. 90.40' ft. to the point of beginning.



LANDMARK SURVEYING
 A COMPLETE SURVEYING SERVICE
 2400 GRAND AVE. SUITE 210 OGDEN, UTAH 84401
 PH 467-8214 FAX 467-8214

CLIENT: NAOMI BUSHELL
 LOCATION: S.W. ¼ SEC. 27, T.6N, R.1W.
 NOB HILL ADDN. TO OGDEN CITY
 SURVEYED:
 6-13-95

001233