

DRAWING NUMBER

001234

PLAN HOLD CORPORATION • IRVINE, CALIFORNIA
REORDER BY NUMBER 075AP

DRAWING NUMBER

001234

PLAN HOLD CORPORATION • IRVINE, CALIFORNIA
REORDER BY NUMBER 075AP

DRAWING NUMBER

001234

PLAN HOLD CORPORATION • IRVINE, CALIFORNIA
REORDER BY NUMBER 075AP

DRAWING NUMBER

001234

PLAN HOLD CORPORATION • IRVINE, CALIFORNIA
REORDER BY NUMBER 075AP

RECEIVED

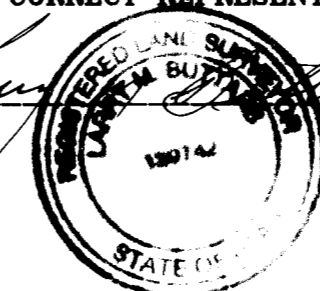
NOV 28 1995

W

SURVEYORS CERTIFICATE

I, DALLAS K. BUTTARS, A REGISTERED LAND SURVEYOR AS PRESCRIBED BY THE LAWS OF THE STATE OF UTAH AND HOLDING LICENSE NUMBER 161594, DO HEREBY CERTIFY THAT I MADE A SURVEY OF THE BELOW DESCRIBED PROPERTY AND THE PLAT HEREON IS A TRUE AND CORRECT REPRESENTATION OF SAID SURVEY.

DATE: 7-5-95 SIGNED

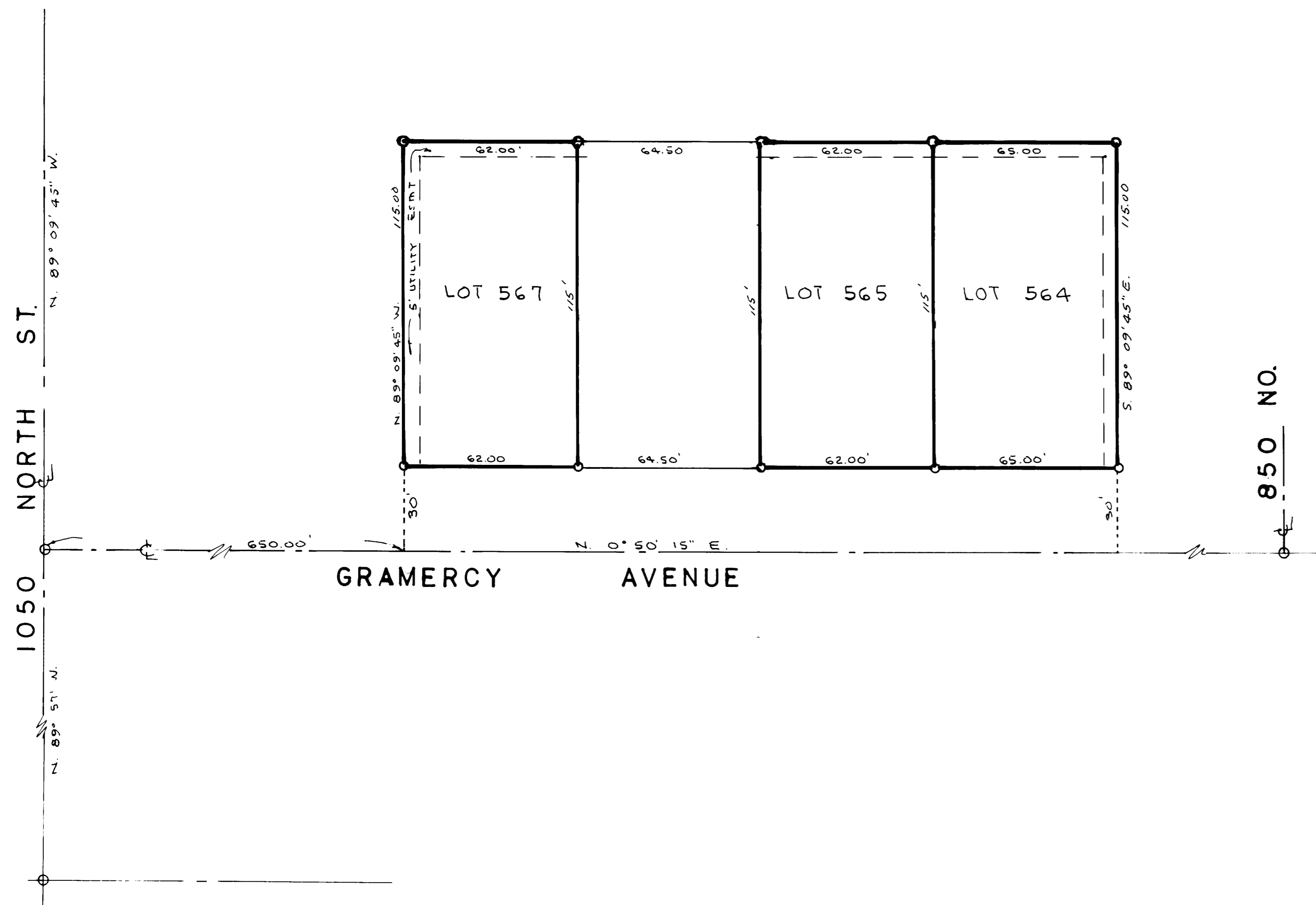
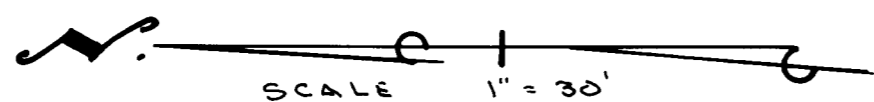


NARRATIVE:

The purpose of this Survey was to establish lot corners for the construction of homes.
Basis of bearings: Record bearing N. 0° 50' 15" E. along Gramercy Ave. (Subdivision Plat) between O.C.'s Monuments at 1050 No. and 850 No. St's.

DESCRIPTION

Lots 564, 565 and 567, Ron-Clare Village Subdivision No. 5, Ogden City, Weber County, Utah.



LANDMARK SURVEYING
 A COMPLETE SURVEYING SERVICE
 2486 GRANT AVE. SUITE 318 OGDEN, UTAH 84401
 PH 687-4014 FAX 687-5991

CLIENT: MARQUARDT - ATTEBERY
 LOCATION: N.W. 1/4 SEC. 9, T.6N., R.1W. S.L.B. & M.
 SURVEYED: 6-21-95

001234