

DRAWING NUMBER

001239

PLAN HOLD CORPORATION • IRVINE, CALIFORNIA
REORDER BY NUMBER 075AR

DRAWING NUMBER

001239

PLAN HOLD CORPORATION • IRVINE, CALIFORNIA
REORDER BY NUMBER 075AR

DRAWING NUMBER

001239

PLAN HOLD CORPORATION • IRVINE, CALIFORNIA
REORDER BY NUMBER 075AR

DRAWING NUMBER

001239

PLAN HOLD CORPORATION • IRVINE, CALIFORNIA
REORDER BY NUMBER 075AR

SURVEYORS CERTIFICATE

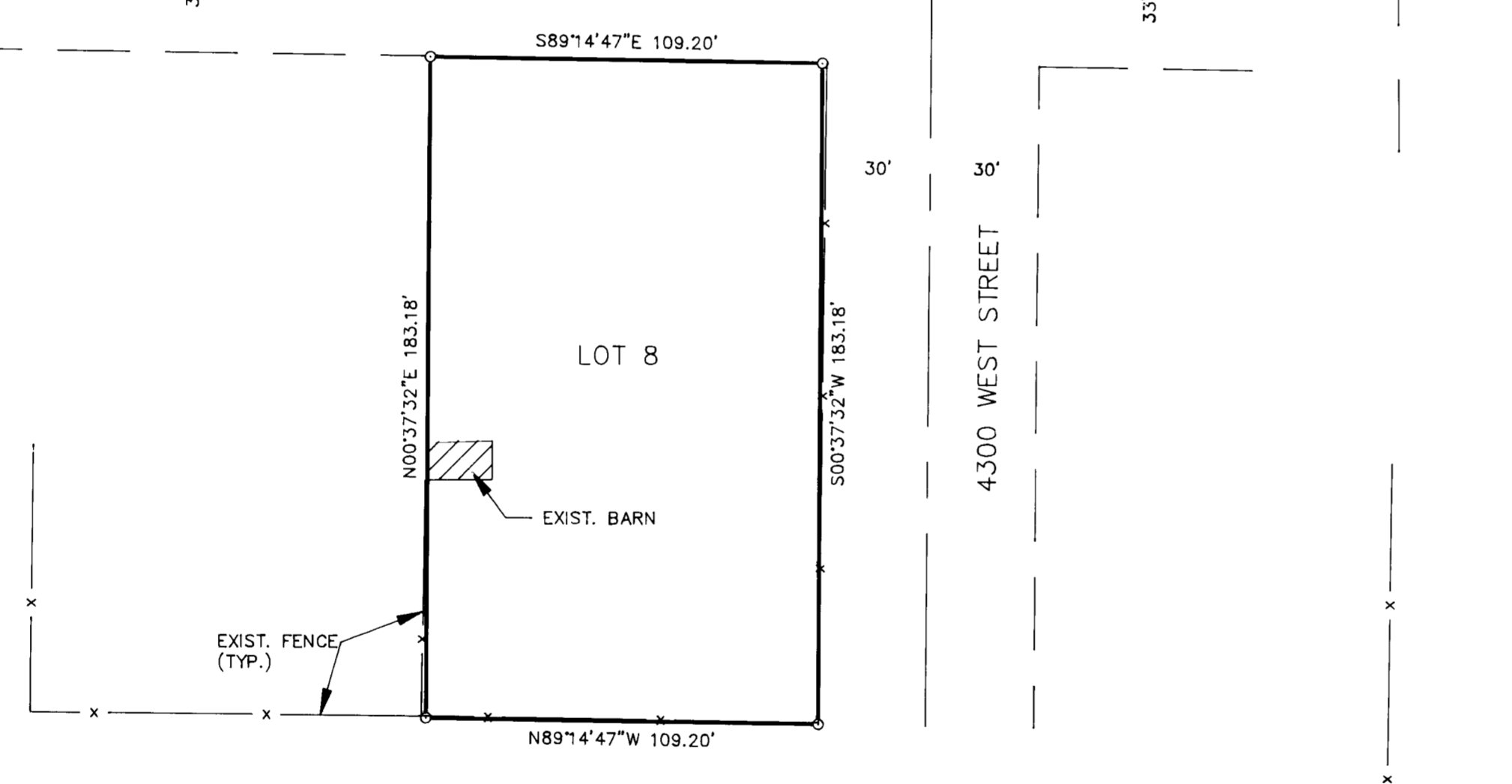
I, DALLAS K. BUTTARS, A REGISTERED LAND SURVEYOR AS
PRESCRIBED BY THE LAWS OF THE STATE OF UTAH AND
HOLDING LICENSE NUMBER 6985, DO HEREBY CERTIFY THAT
I MADE A SURVEY OF THE BELOW DESCRIBED PROPERTY AND
THE PLAT HEREON IS A TRUE AND CORRECT REPRESENTATION
OF SAID SURVEY.
DATE: Sept. 15, 1995 SIGNED: Dallas K. Buttars

CENTER SEC. 5, T6N, R2W
SLB&M WEBER CO. BRASS
CAP

S 89°14'46" E
2638.41'
RECORD

1500 NORTH STREET
(PIONEER ROAD)

WEST 1/4 COR. SEC. 4,
T6N, R2W, SLB&M
WEBER CO. BRASS CAP
1962



BOUNDARY DESCRIPTION

ALL OF LOT 8, PIONEER VILLAGE NO. 1 PLAIN CITY, UTAH, WEBER COUNTY,
UTAH ACCORDING TO THE OFFICIAL PLAT THEREOF.

NARRATIVE

THE PURPOSE OF THIS SURVEY WAS TO ESTABLISH THE BOUNDARY IN
THIS SUBDIVISION FOR FUTURE IMPROVEMENTS. ALL BEARINGS ARE
ON THE STATE PLANE GRID BEARING.

SCALE: 1" = 40'

CLIENT: NYLES VANHOUSEN
LOCATION: S.W. 1/4 SEC. 4, T6N R2W
SLB&M
SURVEY DATE: 9-02-95



LANDMARK SURVEYING

A COMPLETE SURVEYING SERVICE

2485 GRANT AVE., SUITE 918-B OGDEN UTAH 84401
PH 627-4014 930-5291

001239