

DRAWING NUMBER

001246

DRAWING NUMBER

001246

DRAWING NUMBER

001246

DRAWING NUMBER

001246

RIVER PARCEL DESCRIPTION

BEING A PART OF LOTS 1, 4, 5, AND PART OF AN UNNUMBERED LOT IN BLOCK 7, OGDEN CITY FIVE ACRE PLAT "A", AND DESCRIBED AS FOLLOWS:

BEGINNING AT THE NORTHEAST CORNER OF LOT 45, RIVERSIDE ADDITION TO OGDEN CITY, SAID POINT BEING N.00°58'00"E., 1107.37 FEET AND N.89°02'00"W., 40.00 FEET FROM THE OGDEN CITY MONUMENT AT THE INTERSECTION OF 20TH STREET AND LINCOLN AVENUE AND RUNNING:

THENCE S.00°58'00"W., ALONG THE WEST LINE OF LINCOLN AVENUE, A DISTANCE OF 13.15 FEET;

THENCE S.66°51'02"W., 155.25 FEET;

THENCE S.70°17'48"W., 174.67 FEET;

THENCE N.78°19'51"W., 60.34 FEET TO A POINT ON A NORTH TO SOUTH CHAIN LINK FENCE;

THENCE N.72°46'14"W., 34.63 FEET TO A POINT ON A EAST TO WEST CHAIN LINK FENCE;

THENCE N.80°08'52"W., ALONG THE WESTERLY LEG OF THE CHAIN LINK FENCE, A DISTANCE OF 205.26 FEET TO THE NORTHEAST CORNER OF A BUILDING;

THENCE N.80°06'00"W., ALONG THE NORTH EDGE, A DISTANCE OF 19.23 FEET TO THE WEST CORNER OF SAID BUILDING;

THENCE N.00°58'00"E., 65.30 FEET;

THENCE N.89°02'00"W., 65.30 FEET;

THENCE N.00°58'00"E., 42.62 FEET;

THENCE S.89°11'00"E., 245.08 FEET;

THENCE N.89°12'00"E., 274.76 FEET;

THENCE N.71°26'24"E., 69.84 FEET TO THE POINT OF BEGINNING AND CONTAINING 41,802 SQUARE FEET OR 0.96 OF AN ACRE.

RECEIVED

DEC 26 1995

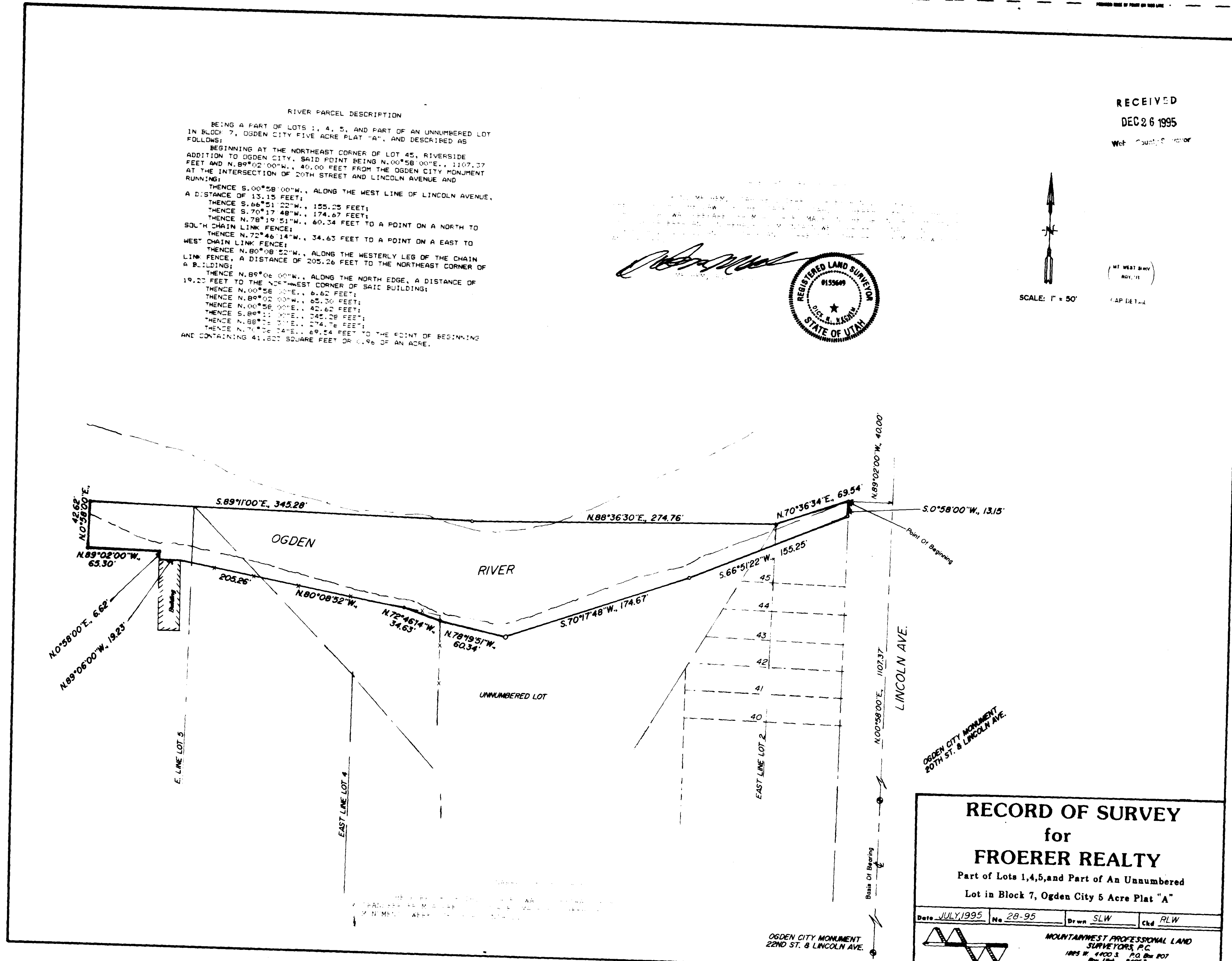
West County Clerk



SCALE: 1" = 50'

(MT WEST BAY BY 11)

CAP DEL 11



RECORD OF SURVEY
for
FROERER REALTY
Part of Lots 1,4,5, and Part of An Unnumbered
Lot in Block 7, Ogden City 5 Acre Plat "A"

Date JULY, 1995 No. 28-95 Drawn SLW Chd RLW

MOUNTAINWEST PROFESSIONAL LAND SURVEYORS, P.C.
1825 W. 4400 S. P.O. Box 107
Riv. View, UT 84057
Phone (801) 731-5330 Fax (801) 731-5331

001246