

SURVEY CERTIFICATE

I, K. Greg Hansen, do hereby certify that I am a Registered Land Surveyor and that I hold Certificate No. 167819 as prescribed by the Laws of the State of Utah, and that I have made and/or supervised the surveying and mapping work herein shown and represented on this plan and that the same is a true and correct representation of said survey to the best of my knowledge and belief.

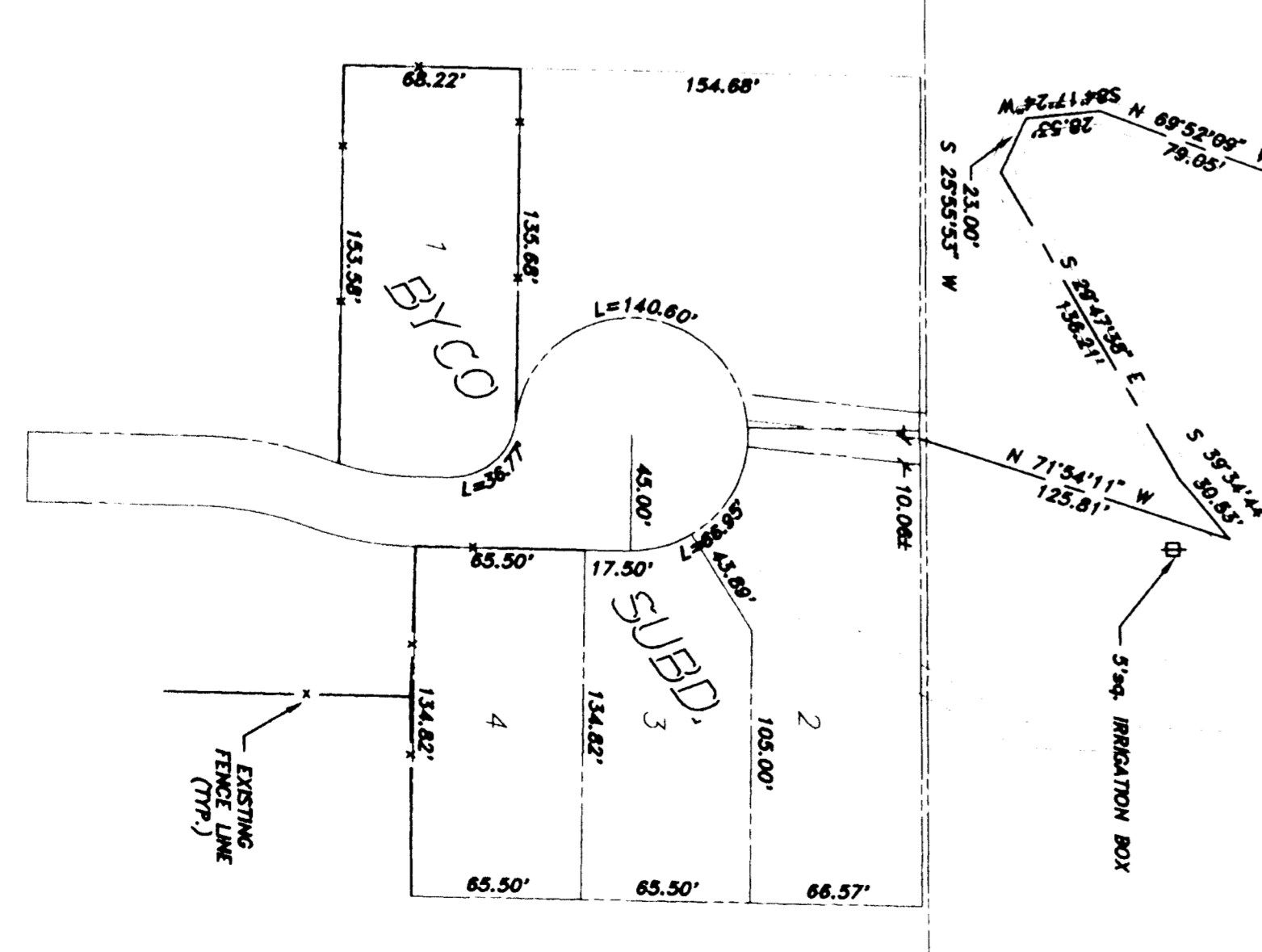
K. Greg Hansen, L.S.

DATE

BOUNDARY DESCRIPTION

A CENTERLINE EASEMENT

PART OF THE NORTHWEST 1/4 OF SECTION 26, TOWNSHIP 6 NORTH, RANGE 1 WEST, S.L.B.&M., OGDEN CITY, UTAH DESCRIBED AS BEGINS AT THE NORTH AND SOUTH 00744.07' EAST 24.22' FEET FROM THE NORTH CORNER OF THE SAID SECTION AND RUNNING THENCE SOUTH 1758.59' EAST 138.88' FEET; THENCE SOUTH 749.27' EAST 136.65' FEET; THENCE SOUTH 751.05' WEST 102.97' FEET; THENCE NORTH 751.05' EAST 116.27' FEET; THENCE SOUTH 751.05' WEST 116.27' FEET; THENCE NORTH 103.46' EAST 9.32' FEET; THENCE SOUTH 809.92' WEST 13.22' FEET; THENCE SOUTH 284.34' WEST 33.53' FEET; THENCE SOUTH 451.53' WEST 56.65' FEET; THENCE SOUTH 947.46' WEST 47.58' FEET; THENCE SOUTH 1631.28' EAST 64.57' FEET; THENCE SOUTH 1957.07' EAST 107.49' FEET; THENCE SOUTH 3246.11' WEST 60.86' FEET; THENCE SOUTH 5012.31' WEST 32.64' FEET; THENCE SOUTH 8607.07' WEST 51.68' FEET; THENCE NORTH 6925.08' WEST 79.05' FEET; THENCE SOUTH 8417.24' EAST 136.21' FEET; THENCE SOUTH 2535.53' WEST 30.53' FEET; THENCE NORTH 2847.38' EAST 136.21' FEET; THENCE SOUTH 3924.44' EAST 30.53' FEET; THENCE NORTH 7134.11' WEST 125.81' FEET TO THE END OF SAID EASEMENT AND THE EAST LINE OF B.C.O. SUBDIVISION, SAID POINT BEING NORTH 10.06' FEET MORE OR LESS FROM THE NORTHEAST CORNER OF LOT 2 OF SAID SUBDIVISION, THE BASIS OF BEARING IS SOUTH 0744.92' WEST FROM THE WEST 1/4 CORNER OF SECTION 23 TO THE NORTHWEST CORNER OF SAID SECTION 26.



U.S. WEST
OGDEN CANYON
 A CENTERLINE EASEMENT IN THE
 NW 1/4, SEC. 26, T.6N., R.1W., S.L.B.&M.

Drawn By: MD Date: 1/21/92
 Designed By:
 Checked By:
 Approved By:
 Scale: 1" = 80'
 Drawing File: 25-3-7
 JOB NUMBER: 25-3-7

HANSEN & ASSOCIATES, INC.
 Consulting Engineers and Land Surveyors
 538 North Main Brigham City, Utah 84302
 Brigham City Ogden Logan
 723-3491 399-4905 752-8272

No.	Date	By	Revision

SHEETS
 OF
 1
 1