

DRAWING NUMBER  
001313

PLAN HOLD CORPORATION • IRVINE, CALIFORNIA  
RECORDER BY NUMBER 075AR  
POSITION EDGE OF PRINT ON THIS LINE

DRAWING NUMBER  
001313

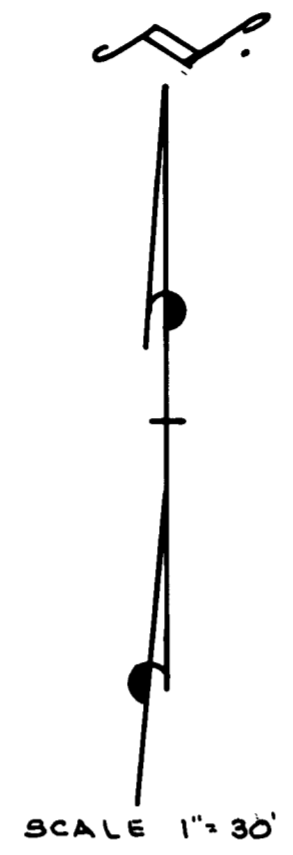
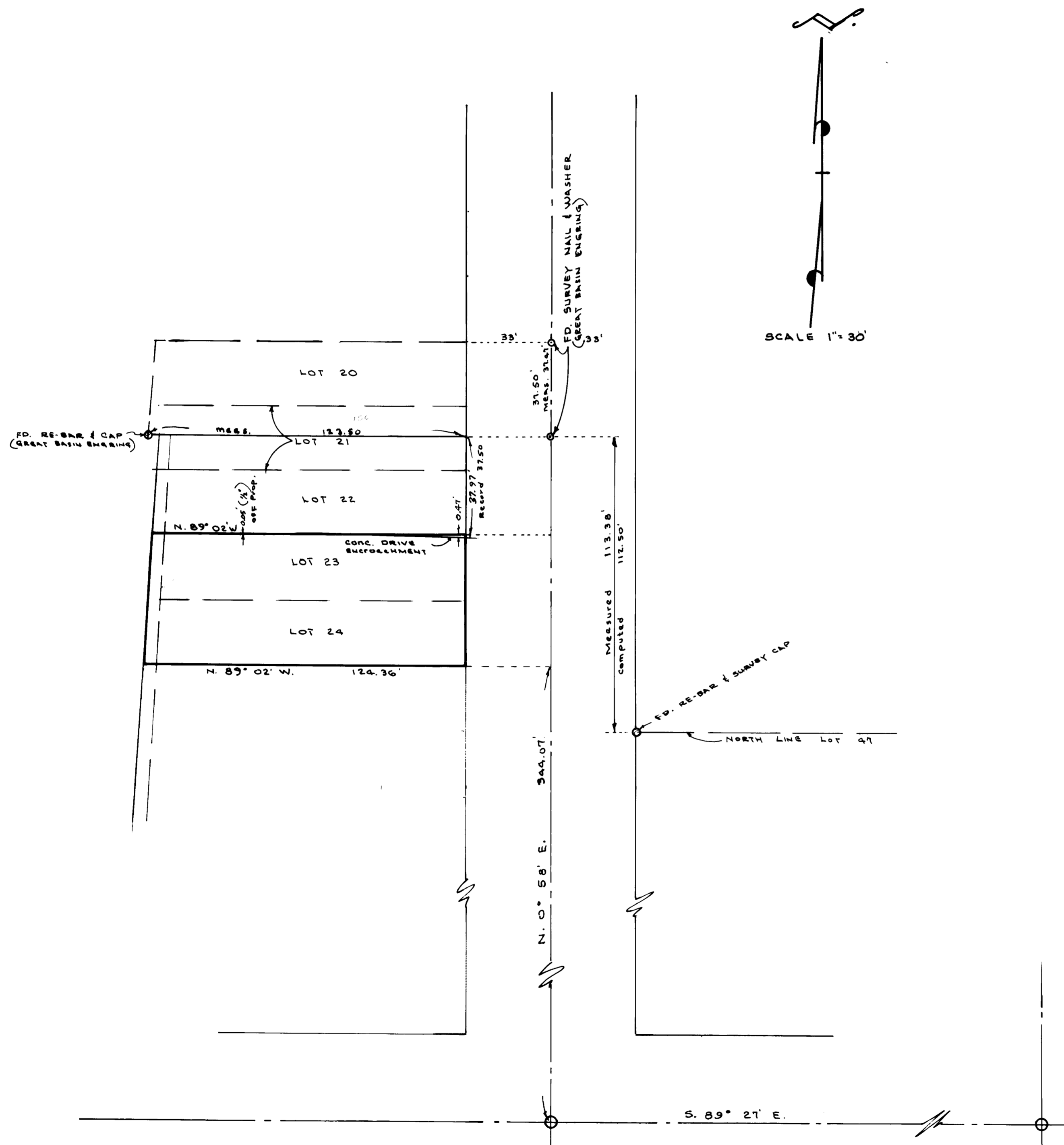
PLAN HOLD CORPORATION • IRVINE, CALIFORNIA  
RECORDER BY NUMBER 075AR  
POSITION EDGE OF PRINT ON THIS LINE

DRAWING NUMBER  
001313

PLAN HOLD CORPORATION • IRVINE, CALIFORNIA  
RECORDER BY NUMBER 075AR  
POSITION EDGE OF PRINT ON THIS LINE

DRAWING NUMBER  
001313

PLAN HOLD CORPORATION • IRVINE, CALIFORNIA  
RECORDER BY NUMBER 075AR  
POSITION EDGE OF PRINT ON THIS LINE



### SURVEYORS CERTIFICATE

I, LARRY M. BUTTARS, A REGISTERED LAND SURVEYOR AS PRESCRIBED BY THE LAWS OF THE STATE OF UTAH AND HOLDING LICENSE NUMBER 2596, DO HEREBY CERTIFY THAT I MADE A SURVEY OF THE BELOW DESCRIBED PROPERTY AND THE PLAT HEREON IS A TRUE AND CORRECT REPRESENTATION OF SAID SURVEY.

DATE: 9-22-95 SIGNED *Larry M. Buttars*

### NARRATIVE:

The purpose of this survey was to establish property lines for fence and to determine extent of known encroachment (driveway). Ogden City record bearings were used for this survey.

### DESCRIPTION

All of Lots 23 and 24, Block 4, South Park Addition to Ogden City, According to the official plat thereof.

RECEIVED  
MAY 18 1996  
Weber County Survey

**LANDMARK SURVEYING**  
A COMPLETE SURVEYING SERVICE  
2486 GRANT AVE. SUITE 318 OGDEN, UTAH 84401  
PH 807-4014 FAX 807-5291

CLIENT: LAMAR ESKELSEN  
LOCATION: BLOCK 4, SOUTH PARK ADD'N. TO OGDEN CITY, IN N.W. 1/4 OF SEC. 5, T.5N., R.1W., S.18.1M  
SURVEYED: